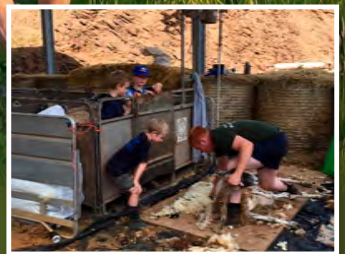




Explorer

Discover the South Devon Area of Outstanding Natural Beauty

Including Events
April - October 2023



A guide on where to go and what to do and see in the South Devon AONB

South Devon AONB
a National Landscape

Explore & enjoy...

Welcome to our 2023 explorer packed full of ideas to get out and enjoy the South Devon Area of Outstanding Natural Beauty!

As well as the events guide for April to October you will find ideas for days out, new routes and activities to try as well as places to find the best local food and drink.

You can also find out more about what makes this 'National Landscape' so very special and have an insight into some of the key projects we are delivering.

.. making the South Devon AONB a real Landscape for Life.



What is an AONB?



An Area of Outstanding Natural Beauty (AONB) is a living landscape recognised as a national treasure by our government.

South Devon is part of the family of protected landscapes across Britain which also includes the National Parks. There are 46 AONBs in the UK – they include some of the most beautiful and cherished landscapes in Britain and need to be cared for now and in the future. For more information visit www.landscapesforlife.org.uk

What's special about South Devon AONB?

Areas of Outstanding Natural Beauty are vibrant landscapes which offer a wealth of opportunities for everyone to enjoy them and look after them. This guide gives you a helping hand to enjoy the South Devon landscape and discover its special features, from self guided walks, trails and rides to themed events, and ideas to enjoy local food, the best views, dark skies and wildlife.

A small team works on behalf of the AONB Partnership Committee. If you would like any more information about the AONB or work of the team, please contact us at the AONB office (back page) or visit www.southdevonaonb.org.uk



South Devon Area of Outstanding Natural Beauty...

..Naturally Beautiful, Nationally Protected

Get out and explore

Discover what makes South Devon special for yourself

With 60 miles (96km) of the South West Coast Path and hundreds of miles of rights of way criss-crossing the area, one of the best ways of exploring the AONB is on foot.

There are various websites offering on-line walks with details of route and terrain, as well as points of interest along the way. Walking guides are also available from information centres and some bookshops. The AONB website has over 40 walks you can download for free. There is a huge variety to choose from; some suitable for seasoned walkers, others for those who like an extended stroll. They range in length from 2 to 12 miles and include details of facilities and access as well as information on wildlife, archaeology and history.



Access for All Removing Barriers

This winter, along with all AONBs and National Parks, we received some additional funding from DEFRA to complete projects to improve access for more people.

We are very pleased to be working with Gordon Guest, the Disabled Ramblers representative for Devon. He has been helping us to identify routes which, with a little bit of improvement, could be upgraded to provide better access for a wider range of users. He helped us plan and assess two interconnected routes from Coleton Camp and Brownstone car parks in Kingswear, and our colleagues at the National Trust English Riviera have been busy making the improvements needed. They are also installing more benches and picnic tables.

We will be continuing to work with Gordon to explore other routes and make them available to people through the walks section of our website www.southdevonaonb.org.uk/walks



GEOCACHING

Geocaches in the AONB

Please visit www.geocaching.com and select the filter 'Hidden by' and type 'South Devon AONB'. There are 22 geocaches along established walks in the AONB plus 5 special AONBee geocaches for this summer.

Please follow the





Heritage

A long lived in landscape ...



Berry Pomeroy Castle



Walking the Coast Path

2023 marks the 50th anniversary of the South West Coast Path. To mark 50 years of protecting and championing the SW Coast Path, the Association is inviting everyone who is passionate about the path to get involved in a 'Trailblazer' Walk – an epic relay of guided walks along the 630 mile SW Coast Path! It will pass through South Devon from the 8th -15th June. It's free to participate, but places must be booked. More info at www.southwestcoastpath.org.uk/media/uploads/trailblazer_walk_itinerary_final.pdf

Other trails



The Dart Valley Trail

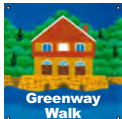
links Dartmouth to Totnes and Greenway to Kingswear, offering 17miles (27km) of glorious walking linked handily to buses, ferries and steam trains. This means you can walk all parts of the trail

- Circle the lower Dart from Dartmouth to Dittisham and Greenway to Kingswear using the ferries (9m, 14km)
- Use the Dartmouth - Dittisham ferries and walk just one side of the route (4.5m, 7km)
- Walk from Totnes to Dittisham (8-9m, 14km) and catch the ferry to Dartmouth then a cruiser back.



The Avon Estuary Walk

links Bigbury-on-Sea to Bantham, via Aveton Gifford, making a 9 mile (14km) walk if you use the River Avon ferry. The ferry has restricted operating hours, so try to check the times before hand and include the ferry crossing early in your walk, so that you aren't rushing later on (see p11).



The Greenway walk

links the National Trust's Greenway Estate to areas of nearby Paignton offering visitors a 'green' way to arrive! The 7 mile (11km) trail can be joined in Broadsands, Galmpton and Churston and offers the best views of Torbay's coastlines and spectacular River Dart estuary in one walk.

Further information

South West Coast Path National Trail

www.southwestcoastpath.org.uk

The Ramblers Association

www.ramblers.org.uk

Dartmoor National Park

www.dartmoor.gov.uk

Devon County Council

www.devon.gov.uk/prow

There are lots of opportunities in the AONB to explore the past. You can do this on your own or with the help of others like the National Trust or English Heritage.

The Kingsbridge Cookworthy Museum

opened in 1972. The galleries are full of permanent displays and special exhibitions. www.kingsbridgemuseum.org.uk

Dartmouth Museum is a small, fascinating museum in an atmospheric old merchant's house on the Butterwalk. www.dartmouthmuseum.org

Salcombe Maritime Museum -

A treasure trove of models, paintings, photographs and artefacts tell the story of Salcombe's links with ships and the sea from ancient times to the Second World War. www.salcombemuseum.org.uk

Start Point

lighthouse was built in 1836 to protect shipping off Start Point in south Devon. The Lighthouse, sited at the very end of the headland,



Start Point

has guided vessels in passage along the English Channel for over 150 years. Details of tours at www.startpointdevon.co.uk

The National Trust owns and manages much of the coastline in the AONB in addition to woods and gardens. All are open for walking. www.nationaltrust.org.uk



Blackdown Rings

Blackdown Rings

was originally an Iron Age hillfort, probably built sometime after 400 BC. It was defended by a massive earth and

stone rampart topped with a timber palisade, and a deep outer ditch.

The site is owned by the **Arundel Charity**, there is a small car park and paths around the monument.

Lupton House is a Grade II* listed building set in beautiful parkland. The Lupton Trust was formed in 2008 to bring the House and gardens back into use for the benefit of the community. www.discoverlupton.com

English Heritage has four exciting castles to visit in South Devon at Bayard's Cove and Dartmouth Castle in Dartmouth, Totnes Castle and Berry Pomeroy Castle near Totnes. www.english-heritage.org.uk/visit/region/southwest



Totnes Castle

Heritage Open Days 2023,

8th - 17th September. Every year places across the country open their doors for free in England's largest festival of history and culture. It's a chance to see hidden places and try out new experiences, to celebrate their heritage, community and history - and it's all FREE. www.heritageopendays.org.uk



As part of our **Coastal Heritage** project we will be staging volunteer digs at Bolt Tail during the 2nd week of September. For more info scan the code.

Out and about

Car free & care free ...



Stagecoach Service 3 to Plymouth via Kingsbridge is a beautiful scenic route through the South Devon villages of Dartmouth, Stoke Fleming, Blackpool Sands, Strete, Slapton, Torcross, and Kingsbridge. Change at Kingsbridge for Salcombe.

Start Bay

The route takes in the dramatic scenery as you travel down towards Blackpool Sands and then along the 3 mile stretch of Slapton Sands. You can choose to stop off at various villages including Stoke Fleming, Strete, or Torcross and do one of our circular walks or just explore the village heritage and hostelryes!

Buses

For bus routes and timetable enquiries, please call traveline or refer to the website for up to date information.

www.travelinesw.com

or download the Traveline app

0871 200 22 33

Calls from landlines cost 12p per minute.

Bus timetables available from local information centres.



Park & Ride

For easy access to these busy town centres:

Dartmouth:

A3122 Dartmouth Outskirts TQ6 9LW.

Open 25th March - 29th October (buses running).

Ticket £5, 8am - 7pm for cars & motorcycles (parking and bus trip), £3 2pm - 7pm.

Prices and times may differ during Dartmouth Regatta.

For latest information check:

<https://southhams.gov.uk/parkandride>

When there is no seasonal bus service from the car park, check machine for charges.

There is a public bus service available for journeys to and from the town, charges apply. The bus stop for this service is located nearby, outside Sainsbury's supermarket.

Salcombe:

A381 Salcombe outskirts.

Open 8th July to 3rd September.

£3 per day to park. Charges apply all day / every day of the year.

For latest information check:

www.salcombetowncouncil.gov.uk

When there is no seasonal service from this car park it is possible to walk into town or there is a public bus service that runs daily and can be used for journeys to and from the town (limited service on Sundays and Public Holidays). The bus stop is approximately 200 metres along Main Road.

Cycling



Cycling in South Devon provides access to some of the best bits of the area, but the hills can be a bit challenging! There are a number of e-bike hire centres across the AONB which can help with our inclines - search online if you fancy trying one out.

Routes to try

Totnes is a good base to cycle from.

Totnes to Dartington

This is a lovely route for families with young children alongside the river. It runs for two miles alongside the River Dart and by Queens Marsh and Bidwell Brook on the Dartington Hall Estate. Refreshments are available in Totnes or at The Cider Press Centre.

Totnes to Ashprington

Part of the Dart Valley Trail, this hilly route is along ancient lanes, water meadow, marshland and quiet woods. There are lovely views of the River Dart. Approximately 6 miles round trip.

Trains

For mainline enquiries about times and fares contact 03457 484950 or go to www.nationalrail.co.uk

Steam railways

A lovely way to appreciate the varied landscape of the area. Steam trains run along the spectacular coast from Paignton to Kingswear for Dartmouth via the passenger ferry. Call Paignton station 01803 555872 or visit www.dartmouthrailriver.co.uk for details of times and fares. Combined river excursions are also available – the Round Robin which takes you from Paignton – Totnes by bus, down the river Dart from Totnes – Dartmouth and then back on the steam train from Kingswear to Paignton.



Out and about

On the water ...



Crossing the water

With five estuaries in the AONB, ferries are an important and enjoyable way to get around. If you're walking the South West Coast Path they form an essential link across the estuaries. As they're dependent on tides and weather it's best to check the ferry services timetable before travelling. For further details speak to an information centre (page 36).



Sense of adventure?

You'll be spoilt for choice in the AONB. Speak to an information centre (page 36) or search the internet for one of the many activity providers offering a range of experiences.



Active water sports

Hire equipment or book up some lessons for professional coaching

- Kite surfing
- Kite buggying
- Coasteering
- Diving
- Surfing
- Sea kayaking
- Stand up paddleboarding.



By boat -

- Enrol for some lessons in Dittisham or Salcombe
- Take a guided trip to see some wildlife or local scenery
- If you fancy time on the water take a cruise down the Kingsbridge-Salcombe Estuary, or up the Dart Estuary to Totnes.



Ferry timetable

Ferry timetables may change, for example due to adverse weather or public holidays. Check journey with operator before travel.



	Yealm Estuary		Erme Estuary	Avon Estuary	Salcombe - Kingsbridge Estuary		
Type of Ferry	Passenger ferry	Electric passenger water taxi	No ferry service	Passenger ferry	Salcombe - East Portlemouth passenger ferry	Kingsbridge - Salcombe passenger ferry	Salcombe - South Sands passenger ferry
Operating Period	7th April - 30th Sept	February - October	The Erme can usually be waded across one hour either side of low tide.	7th April - 1st October	All year	April - October	25th March - 4th November
Operating Times	Daily, usually 10am - 4pm. Service may be restricted to core hours 10am - 12pm and 3 - 4pm.	When existing passenger ferry is not running. Before 10am and after 4pm, on demand.		Daily 10am - 12pm & 2 - 4pm	Daily 8.30am - 5pm. 7pm finish in peak season	Varies with tides, also occasional sailings during Nov - Dec and harbour/creeks & coastal cruises	Summer 9.45am - 5.30pm daily (6pm in August)
Routes	Between Noss Mayo (wide slip) Newton Ferrers (Yealm Hotel Steps) & Warren Point (coast path to Wembury)		Cross between Wonwell slipway and Mothecombe slipway	Bantham slipway to Cockleridge Ham (Bigbury-on-Sea)	Salcombe Jubilee Pier ferry steps to East Portlemouth Jetty	Kingsbridge Steamer Steps or Crabsell Quay to Salcombe Jubilee Pier	Salcombe centre (Whitstrand) to South Sands beach
Contacts	07817 132757	07399 067942 www.ycet.co.uk	At low tide the water should not come much higher than an adults knee.	www.banthamestate.co.uk/getting-here/ferry 01548 560897	01548 842061 / 07769 319375	07967 597527 www.kingsbridge-salcombeferry.com	www.southsandsferry.co.uk

Dart Estuary								
Type of Ferry	Lower Dartmouth vehicle ferry	Higher Dartmouth vehicle ferry	Dartmouth Castle passenger ferry	Dartmouth - Greenway passenger ferry	Dittisham - Greenway passenger ferry	Dartmouth - Dittisham passenger ferry	Dartmouth - Totnes passenger cruises	Kingswear - Dartmouth passenger ferry
Operating Period	All year	All year	Easter - end October	March - November	All year	All year	February - September	All year
Operating Times	Daily 7am - 10.55pm (8am Sunday)	Daily 6.30am - 10.50pm (8am Sunday)	Daily 10am - 5pm on demand.	Daily see website for times	Daily 9am - 5pm (peak season). Ring bell for service.	Daily 10am - 5pm	Available on the website	Daily 7.30am - 6.55pm (9am Sunday)
Routes	Kingswear to Dartmouth South Embankment	Dartmouth North Embankment to Kingswear	Dartmouth South Embankment to Dartmouth Castle	Dartmouth South Embankment to Greenway	Dittisham to Greenway Quay	Dittisham to Dartmouth Double Steps	Totnes Steamer Quay to Dartmouth South Embankment	Dartmouth South Embankment to Kingswear
Contacts	www.southhams.gov.uk/dartmouth-lowerferry	www.dkfb.co.uk	www.dartmouth-castleferry.co.uk	www.greenwayferry.co.uk 01803 882811	www.dittishamferries.co.uk 07907 528201 / 07818 001108	www.dartmouthrailriver.co.uk 01803 555872		

Estuary Wildlife

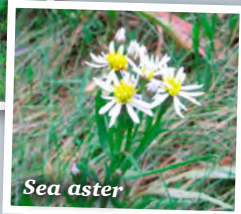
When asked about 'estuary wildlife' across our five wonderful estuaries, we tend to think of the many birds that we see bobbing on their waters or feeding around their tidal shores - an observant few might even spot kingfishers or seasonally ospreys. But our estuaries support so much more wildlife under their waters and some such as saltmarshes on the shores almost hide in plain sight.



Sea rocket



Rock samphire



Sea aster

Estuaries are a particular challenge to wildlife as the tides constantly vary the salinity and for the wildlife on the shore, exposure to whatever the weather is doing! So the wildlife either has to be quite hardy and able to survive these extremes or migrate with the tides. Tidal migration doesn't have to mean swimming in and out with the tides or flying to roost between the tides but can mean hunkering down into the mud or just hiding under the damp seaweed.

While estuaries might not be able to boast the highest diversity of species, those species that can survive their challenging conditions are often found in very significant populations.

Many of the ecosystems common to many estuaries such as their saltmarshes, seagrass meadows and mudflats are collectively globally important for the carbon they capture and have locked away for millennia potentially.

Our South Devon AONB Estuaries Partnership promotes creating a better understanding and awareness of our estuaries and their sustainable use and enjoyment hosting a local Estuary Forum for most of them – see our website for further details.

Please treat all wildlife with respect and be mindful of even small disturbances ... if everyone causes them, the cumulative impact can be threatening

The Dart Estuary near Sharpham

Farming in Protected Landscapes Programme

New orchard

During the second year of this programme the local area panel has approved a further 24 projects with grant funding in excess of 250k committed.

Through the programme, farmers and land managers can be supported to carry out projects that support nature recovery, mitigate the impacts of climate change, provide opportunities for people to discover, enjoy and understand the landscape and cultural heritage, or support nature-friendly, sustainable farm businesses. It's a programme of funding for one-off projects covering these areas of work, not an agri-environment scheme.



Winter bird feeder

The Farming in Protected Landscapes Programme (FiPL) pays for projects that, in the opinion of the Local Assessment Panel provide value for money and meet **at least one of the outcomes** of the themes of climate, nature, people and place. In addition to this the

project must meet at least one of the objectives of the AONB Management Plan. The panel is made up of local farmers, and representatives from Natural England, RSPB, the AONB Partnership Committee and South Hams District Council.

There has been a great range of projects from those submitted with funding supporting commercial farmers to small holders. Including almost 4000m of new hedgerows, tree planting, 187 fruit trees in new orchards, restoration of parkland and creation of wildflower meadows.

The Darke family Coleridge Farm near Chillington have installed a milk vending machine along with a new orchard, bird



Fixing the tree guard



Bee box

boxes and signs to educate the public about sustainable food production and environmentally friendly farming in the AONB, a parking area has been created to enable people to make better use of the footpaths on the farm. and they are hosting several Open Days.

Another project has been funded to reintroduce Water voles to the River Gara. This will take place over a two year period at four separate locations bringing increased biodiversity and greater connectivity. Landowners will host 20 visits a year for local primary school children via the mid tier Countryside Stewardship scheme.

The programme will run until March 2025. Further info and details of funded projects www.southdevonaonb.org.uk/opportunities-for-farmers-2021-24



farm walk

News snippets

Saltmarsh

South Devon AONB Estuaries Partnership - Dart Estuary Saltmarsh Restoration

We are presently engaged in identifying the main existing and potential saltmarshes around the upper shores of the Dart Estuary, as well as a joint programme with the Bioregional Learning Centre to raise a wider community awareness of the special qualities and ecosystem services of these special wildlife communities.

The next stage will be to seek the landowners' permission to survey the saltmarshes condition and health with a view to prescriptive conservation management measures where necessary to nudge them towards their prime natural state.

We are also continuing to work on a number of seagrass conservation management actions.

Saltmarsh by Stoke Gabriel

Access for All funding

Access for All funding is capital funding for physical and digital infrastructure improvements to make protected landscapes more accessible for people of all ages and abilities and from all socio-economic backgrounds, to make them what Glover called, 'places for everyone'.

£59,856 of funding was made available for 2022/23 and a further £62,931 for 2024/25. No funding is available for this programme in 2023/24. The projects have included the following:

- Coleton / Scabbacombe all access path improvements working with South Devon disabled ramblers.
- Wembury beach, Wembury Point, working with the South West Coast Path Association, Devon County Council and National Trust.
 - Upgrading the pathway through Lower Mill meadow by creating 265m of accessible path for wheelchair users.
- South Milton Sands beach access project.

Want to know more?

See our Dart Estuary saltmarsh event P27



Food matters



74% of the AONB landscape is farmed with a patchwork landscape of farms producing milk, beef, and lamb in particular. The South Devon Area of Outstanding Natural Beauty boasts a vibrant food and drink economy - the countryside is rich, varied, and immensely productive.



Dartmouth Food Festival

20th - 22nd October 2023

Having grown from humble beginnings in 2004 into a first class feast of entertainment featuring workshops, seminars, tastings, competitions, demonstrations and over 100 hand-picked exhibitors (many of which are from Devon), the festival represents some of the best food and drink that the South West has to offer.

www.dartmouthfoodfestival.com

Farmers Markets in the AONB

Shopping at the farmers market means

- Buying fresh, seasonal produce that's only travelled a short distance
- Meeting the people who've grown, raised or made the products
- Finding specialist and unusual produce and crafts
- Enjoying the markets friendly atmosphere
- Benefitting the local economy and being part of the community.

Kingsbridge - Kingsbridge Farmers and Local Producers Market is on 1st, 3rd and 5th Saturdays each month on the Quay from 9am - 1pm. www.kingsbridgefarmersmarket.co.uk

Dartmouth - The Farmers Market is held on the 2nd Saturday of each month from 9am - 2pm in the old Market Square. Hosted by The Coastal Kitchen. www.coastalkitchendevon.com

Wembury - 9.30am - 12 noon, Wembury Village Hall. 1st Saturday of the month except December which is on 16th. Range of food, drink and local crafts. See Wembury Farmers Market facebook.

In addition there are good markets in Dartmouth on Fridays, and Totnes on Fridays & Saturdays, with a selection of local produce from the AONB on sale. There is also a Sunday Food and Craft Market in Totnes every 3rd Sunday of the month.

Tips for shopping & eating out

- * When shopping try to make a point of sourcing local produce to really experience what wonderful food this area has to offer.
- * If you eat out locally do make a point of enquiring where the ingredients are sourced from - it helps to highlight to businesses that consumers care about traceability and quality local food and encourage them to seek out more local suppliers.
- * Whenever you purchase food and drink from the AONB you are helping to sustain the local economy and the local landscape.

Life on the Edge



Silver studded blue butterfly



Great Green Bushcricket



Family days at The Box

What is Life on the Edge?

Life on the Edge (LotE) is a multi-partner project, led by the South Devon AONB team with our main partner, Buglife, along with the National Trust, Torbay Coast and Countryside Trust and the South West Coast Path. It aims to restore viable populations of some of the UK's rarest insects living along the South Devon coast between Berry Head and Wembury, including the last known colony of the Six-banded nomad bee. This bee faces imminent extinction unless action is taken. The project will also enable the

recovery of over 20 other threatened invertebrates including the Long-horned bee, Short-necked oil beetle, and Moon spider.

Why is it needed?

Saving these species and giving them a safer long-term future means expanding and reconnecting the traditional coastal landscapes on which they depend, creating more flower-rich fields and highway verges, carefully managed scrub mosaics, strategic hedgerow connections, and more wildlife-friendly parks, churchyards, school grounds and private gardens. The result will be a coastline, and its connected hinterland, that is buzzing with wildlife, packed with wildflowers and a treat for the eye for residents and visitors alike.



Lote Torre Abbey event



Short-necked Oil beetle



Volunteer plants at Prawle

Creating a buzz!

As well as working with farmers and local communities to find ways to enhance, restore and create wildflower meadows along the coast, we have been out and about telling hundreds of people all about the Life on the Edge project; getting them involved in meadow making, searching for rare insects and creating amazing artworks! In addition to a programme of public events, we are targeting activities directly at some harder to reach groups who might not find it so easy to get engaged. A lot has already happened but these are some of the activities we are doing this Spring and Summer:



Mediterranean oil beetle search

- Working with The Box in Plymouth during Easter 2023 as part of The Wild Escape for some great family activities, all around our rare Lote bees! Full details on our website.
- A series of activities have been planned with Dementia Friendly Parishes around the Yealm. We will be joining in with the reading group, the crafts group and the walking group to share memories and explore some of the highlights of the project. This will all be shared at a celebration tea party in Mothecombe in June.

- Working with Play Torbay to deliver activities for home educated children, local families and ASRUS, a group for young people who have Autism Spectrum Conditions.
- Doorstep Arts will be joining with us to work with Girls Against Anxiety in Paignton to discover more about nature connectedness and how it can affect our wellbeing, through journaling, workshops, and a trip to the coast.
- We are teaming up with Devon Recovery Learning Community to deliver a programme of wellbeing walks for people with experience of mental health difficulties, their family and friends, and the professionals who support them.

We have also been busy recruiting volunteers to help us with all the work involved in the project and to help them find ways to improve the areas where they live, for insects. If you would like to volunteer yourself, please get in touch!

Our Art on the Edge strand is being developed by Doorstep Arts, our cultural partners. They are bringing loads of creativity and excitement to the project! Look out for a touring theatre in June, our Celebration event on 2nd July and join in the hunt for AONBees in June and July!

You can find out more about this and lots of other LotE events on our website, as well as keep up to date with news from the project on our blog and find links to downloadable hotspot walks, at www.southdevonaonb.org.uk/life-on-the-edge



We have made a 10 minute film to introduce Life on the Edge - you can see it here:

www.southdevonaonb.org.uk/life-on-the-edge





There is so much going on in the South Devon AONB that we can't possibly fit it all in here! There are lots more events and full details of all the ones printed in this programme on our website. Check it out and get exploring!

www.southdevonaonb.org.uk

Key	Beaches	Main beaches	Ferries
	Event start points		Low tide crossing point
	Downloadable trail start/finish points		Information Centres
	www.southdevonaonb.org.uk/walks		South Devon AONB

The OS map, Explorer OL20 covers the whole of the AONB area and has details of all rights of way.

Contains Ordnance Survey data © Crown copyright and database right 2023. Ordnance Survey, 0100057066



Your guide to events in the AONB for 2023

This programme features walks, talks and events organised by South Devon Area of Outstanding Natural Beauty Unit (AONB) and other organisations that help us to enjoy, look after and manage the area.

We hope that you'll find lots of ideas for days out and ways to enjoy our stunning AONB, as well as events which will help you understand more about looking after, and living, in a protected landscape.

When attending these events, please remember:

- Wear sensible footwear and clothing.
- Some events are held on uneven or slippery ground, or rocky beaches; please take extra care.
- If not stated, please check with the organiser if dogs are allowed on the event.
- Refreshments suggested in this programme are optional and only included in the price of events if stated.
- **Where this programme lists activities run by another organisation or company, the responsibility for that event lies with them.**

Life on the Edge Get out and see it for yourself!

There are lots of great events coming up this Spring and Summer – look out for the LotE logo in the programme. This stage of the project will end with a **big Celebration event** at Wembury Barton Farm on Sunday July 2nd. There will be lots going on including performances, crafts, displays, bug hunts, have a go activities, wildflower walks, refreshments and more – see page 29 for more details.

If you would like to get out and explore the LotE hotspots for yourself, pick a sunny day and hopefully you will get to see some of our amazing insects on the wing. You can download free hotspot walking guides on our website.

If you venture out in June or July, you can join the hunt for our AONBees! We will be hiding 5 AONBees along the LotE coastline, one in each of the 5 hotspots and putting out 5 new AONBee geocaches for the Summer.

Get all of this information and more on our website www.southdevonaonb.org.uk/life-on-the-edge or contact nicky.bailey@southdevonaonb.org.uk

Life on the Edge
Working together
to restore a coastline
buzzing with wildlife



Bee Positive - The Wild Escape

1st - 22nd April 10am
12pm & 1pm - 3pm
Life on the Edge activity days
Tues 4th and 11th April
The Box - Plymouth



Our amazing friends at The Box will be running a two week programme of activities all based around our rare LotE bees - the 6-Banded Nomad bee and the Long-horned bee. We will be there too on Tuesday 4th and Tuesday 11th April. You can find out more www.theboxplymouth.com/events. Free (supported by Arts Council England).
Meet at The Box, Tavistock Place, Plymouth PL4 8AX



Rockpool rambles, seashore safaris, snorkel safaris and more!

Various dates April - Oct.
See website for details
Devon Wildlife Trust

Join Devon Wildlife Trust for exciting seashore adventures including rockpooling, seashore crafts, shore safaris, surveys and more. All children must be accompanied by an adult. See website for more details and to book - www.wemburymarinecentre.org
Meet at Wembury Marine Centre, PL9 OHP

Easter egg hunt at Coleton Fishacre

24th March - 30th April 10.30am
- 4.30pm (last entry 3.30pm)
National Trust

Make your way along the trail and find bee-inspired activities for all the family. So come along and explore the beautiful garden of Coleton Fishacre. The price of the trail is £3 per child and includes a trail map, pencil and chocolate egg at the

end. National Trust admissions apply. Egg hunt £3 per child. Meet at Visitor reception, Coleton Fishacre, Kingswear TQ6 0EQ

Brixham fish market tours 12th April 6.15am - 9am Brixham Trawler Agents & Rockfish

Guided tour through the market and fish quay finishing with a seafood breakfast at Rockfish. **Booking essential** see www.brixhamfishmarket.co.uk/brixham-fish-market-tours £25 per person (14+) inc donation to Fishermen's Mission. Meet at Brixham Fish Quay, Brixham TQ5 8AW

Easter Eggcase hunt with The Shark Trust

Sun 2nd April 10.30am - 12.30pm
Devon Wildlife Trust

An Easter egg hunt with a difference to celebrate 20 years of the Great Eggcase Hunt run by The Shark Trust. Try to find mermaids purses (shark and ray egg cases) and more – ending with a small chocolate prize! See website for more details and to book - www.

wemburymarinecentre.org. £3 per child plus booking fee. Meet at Wembury Marine Centre, PL9 OHP

Pebbles on the Beach Mon 3rd April 10am - 12 noon Field Studies Council

Wander along Slapton Sands and around to Limpet Rocks, looking at the formation of our fascinating coastline and how our unique stretch of beach came to exist. **Booking essential**, see www.field-studies-council.org/whats-on-at-slapton-ley Adult £8, child £5. Meet at Torcross car park, by the bird hide. TQ7 2TQ



Between the tides

Fri 7th April 1pm – 3.30pm
Field Studies Council

Explore life between the tides on East Prawle's stunning rocky shore environment. From giant kelp fronds to miniature anemones, every rock pool holds a secret ecosystem waiting to be discovered.

Booking essential, see www.field-studies-council.org/whats-on-at-slapton-ley Adult £8, child £5.

Meet at East Prawle village Green, Chivelstone TQ7 2DF

Seashore Egg Hunt @ Easter

Sat 8th April 1pm- 3pm
South Devon AONB

Join our AONB Estuaries Officer to search for real-life sea-life eggs along the beach and rocky shore at North Sands – discovering some of the fascinating stories of the sea-life found here. Hoping to find some catshark or ray eggs, dogwhelk egg capsules and just possibly even a fish's nest. Some clambering across seaweed covered rocks and through rockpools. Dogs not permitted. Free.

Meet at North Sands Car Park, Salcombe TQ8 8LD

South Milton's seaways

Sat 8th April 11am – 4pm
Valerie Belsey

A roughly 6 mile long walk along and back from the coast path revealing a wealth of history and wildlife. Maybe refresh yourself with a cream tea in the Cottage Hotel when you return and learn more about the history of this charming place. This walk is featured in Exploring Green Lanes in the South Hams and led by the author. **Booking essential** email valeriebelsey@gmail.com.

Adults £4 (free if arrive by public transport, bike or on foot). Meet at The Cottage Hotel, Hope Cove, South Huish. TQ7 3HJ

Guided wildlife canoe tour

Sun 9th April 9am – 11am
Singing Paddles

Using safe, stable and social canoes this guided tour explores the Bowcombe Creek area of the Salcombe / Kingsbridge estuary. The canoes are easily controlled and paddled by beginners. This quiet creek offers the chance of some interesting wildlife encounters, a look at the industrial archaeology and try some challenges.

Booking essential see www.singingpaddles.co.uk.

Adult £35, child £15. Meet at Newbridge on Bowcombe Creek, Kingsbridge TQ7 2DH



Tremendous Trees

Mon 10th April 2pm – 4pm
Field Studies Council

Experience life in the slow lane: learn how trees go about their lives in our amazing ancient woodland. Sensible outdoor clothing and footwear will be needed.

Booking essential see www.field-studies-council.org/whats-on-at-slapton-ley Adult £8, child £5.

Meet at Slapton Ley Field Centre TQ7 2QP

Salcombe Through the Ages. An illustrated talk by Roger Barrett

Tues 11th April 7.30pm – 8.40pm
Salcombe Maritime Museum

A fully illustrated talk by Roger Barrett, curator of Salcombe Maritime Museum and author of 'A History of Salcombe and its Surroundings'. Adult £5, child under 16 £2.50.

Meet at Cliff House, Cliff Road, Salcombe TQ8 8JQ

What Lurks Beneath

Wed 12th April 10am – 12 noon
Field Studies Council

Get ready to explore with pond dipping in Slapton Ley and discover anything from damselfly nymphs to dragons. Sensible outdoor clothing and footwear will be needed.

Booking essential see www.field-studies-council.org/whats-on-at-slapton-ley Adult £8, child £5.

Meet at Slapton Bridge, Sands Road, Slapton. TQ7 2QW

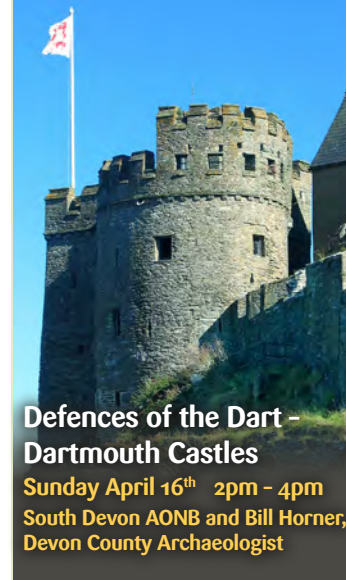
Amazing Migration! - Family wildlife event

Fri 14th April 10.30am – 1pm
The Sharpham Trust

Fun and games at the woodland campsite then off for a nature walk through the woods and down to the River Dart to search for birds and other wildlife. Join wildlife leader Phil Wilson on a fun, family Easter Holiday event on the Sharpham Estate.

Booking essential, see www.sharphamtrust.org/events. Adult £5, child free.

Meet at Sharpham House, Ashprington TQ9 7UT



Defences of the Dart - Dartmouth Castles

Sunday April 16th 2pm – 4pm
South Devon AONB and Bill Horner, Devon County Archaeologist

Join us for a stroll, as part of our South Devon Coastal Heritage project, around two of the three castles in Dartmouth. Discover how this important harbour has been defended for hundreds of years, right back to the 14th century. This short walk of about 2km will be on uneven footpaths and include some steep steps and inclines. It is not suitable for children under 14. **Booking essential**, see www.southdevonaonb.org.uk/events. £2 per person (car park fees).

Meet at Dartmouth Castle car park, Dartmouth TQ6 0JN

Wild food forage

Sun 16th April 10am – 12 noon
Field Studies Council

Taste your way through the National Nature Reserve on a wild-food themed walk, searching for edible plants of the hedgerow and woodland. Sensible outdoor clothing and footwear will be needed.

Booking essential, see www.field-studies-council.org/whats-on-at-slapton-ley Adult £8, child £5.

Meet at Slapton Ley Field Centre TQ7 2QP

Connecting with Nature - Wellbeing Course

Starts 18th April
1pm – 3.30pm, 6 week course
Field Studies Council

Join us for our 6 week course where we will learn how connecting with nature can help your wellbeing.

Booking essential, see www.field-studies-council.org/whats-on-at-slapton-ley Adult £8, child £5.

Meet at Slapton Ley Field Centre TQ7 2QP

A celebration of Wildflower Meadows

Sat 15th April 7.30pm – 9.30pm
South Devon AONB and Moor Meadows

As part of our Life on the Edge project George Peterken, a world-renowned ecologist and meadows expert, is once again returning to Devon following his extremely well-attended talks on Dartmoor. George will introduce the subject, talk about the history of meadows, their cultural value and speak about the wood meadows project he is involved with. **Booking essential** see www.southdevonaonb.org.uk/events. Free event supported by the National Lottery Heritage Fund.

Meet at Malborough Village Hall, near Kingsbridge TQ7 3SN



Shoresearch volunteer survey - other dates available online

Thurs 20th April 12.30 - 2.30pm
Devon Wildlife Trust

Take part in Shoresearch - The Wildlife Trust's national citizen science survey of the intertidal shore - where the sea meets the land! project for See website for more details and to **book** - www.wemburymarinecentre.org. Free.

Meet at Wembury Marine Centre, PL9 OHP

Dawn Chorus

Sat 22nd April 6am - 8am
Field Studies Council

Listen to the sound of birds waking at dawn on a quiet morning stroll around Slapton Ley. Sensible outdoor clothing and footwear will be needed.

Booking essential, see www.field-studies-council.org/whats-on-at-slapton-ley Adult £8, child £5.

Meet at Slapton Ley Field Centre TQ7 2QP



Explore the Shore - Elberry Cove

Sun 23rd April 2pm - 4pm
Ian Blackwell & Guy Baker

Explore the history and coastal environment of the South Devon coast - games, foraging, playing, paddling and adventures! This is aimed at individuals, as well as families with children of all ages. Dogs on leads are welcome. Bring beach gear, snacks, water/ drinks. See www.southdevonaonb.org.uk for full details **Booking essential** email bookings@dangerousdads.org.uk. Free.

Meet at Churston Court Inn, Churston Ferrers. TQ5 OJE

Flowers of walks and waysides

Sun 23rd April
9.30am - 11.30am
Field Studies Council

Explore the hedgerows and lanes of Devon as they burst into a riot of colour with wildflowers. Sensible outdoor clothing and footwear will be needed. **Booking essential**, see www.field-studies-council.org/whats-on-at-slapton-ley Adult £8, child £5.

Meet at Slapton Ley Field Centre TQ7 2QP



Guided wildlife canoe tour with cream tea

Mon 1st May 3pm - 6pm
Singing Paddles

A 3hr tour where we can travel that little bit further to explore more of the estuary and its wildlife. There will be a supply of Devon clotted cream and strawberry conserve to make the trip more memorable.

The only decision to make is whether to have coffee, tea or hot chocolate to go with the scones! **Booking essential** see www.singingpaddles.co.uk Adult £40, child £20.

Meet at Newbridge on Bowcombe Creek, Kingsbridge TQ7 2DH

Brixham fish market tour

3rd, 17th, 24th May 6.15am - 9am
See page 21 for event details

Crests and bluebells walk

Thurs 4th May 6.30pm - 9pm
Mike Langman

Explore the natural history of Longwood, with a special focus on Britain's smallest birds

the Goldcrest and recently discovered breeding Firecrests plus other birdlife. Bluebells should be at their best in the woodland on this short 2.5 mile walk. See website for more details and to **book** www.mikelangman.co.uk. Adult £12, child £6.

Meet at Higher Noss car park, Bridge road Kingswear TQ6 0EA

Defences of the Dart - Brownstone Battery

Date 21st May 2pm - 4pm
South Devon AONB and Bill Horner,
Devon County Archaeologist

Join us for a walk, as part of our South Devon Coastal Heritage project, around Froward Point in Kingswear. Discover more about this important World War 2 site with so many of buildings and structures still intact. This short walk of about 4km will be on uneven footpaths and include some steps and steep inclines. It is not suitable for children under 14. **Booking essential** see www.southdevonaonb.org.uk/events £2 per person (National Trust car park)

Meet at Brownstone car park, Kingswear TQ6 0EQ

Restoring Nature: Rewilding and Regenerative Farming Literary Festival

Sat 13th May 10am - 6.30pm
Ambios Ltd / East Gate Bookshop

A one day family friendly literary festival - walks, talks, authors, discussions and delicious locally sourced food - see www.ambios.net/restoring-nature for full details. **Booking essential**. Shuttle bus from Totnes or Blue Badge parking on site. Adult £18, child £10 plus booking fee
Meet at Lower Sharpham Barton Farm, Ashprington TQ9 7DX

Birdwatching walk

Sat 13th May 7.30am - 9.30am
National Trust led by Dr Ken Neal

Walk with an expert to enjoy the amazing range of farmland and coastal birds on this farm such as Cirl Bunting, Yellowhammer and Whitethroat. Learn to identify different birds by their call and hear about the Trust's management of the area for wildlife. Bring binoculars if you have them, we have some to borrow. Please try not to wear

bright colours to avoid scaring the birds! Bring a hot drink and snack. Suitable for 14 yrs +. **Booking essential**, see www.nationaltrust.org.uk/visit/devon/east-soar/events. Free but donations welcome.

Meet at East Soar Farm, drive down the track to the farm from the National Trust car park TQ7 3DR

Noss Mayo - both windswept and sheltered

Sat 27th May 10am - 1.30pm
Valerie Belsey

A roughly 3-4 mile long walk taking you close to the coast and the estuary and through wooded areas. As well as beautiful views you will learn more about the fishing in this area. This walk is featured in Exploring Green Lanes in the South Hams and led by the author. Bring a drink and wear suitable clothing and footwear. **Booking essential** email valeriebelsey@gmail.com. Adults £4 (free if arrive by public transport, bike or on foot).

Meet at Recreation Ground, Noss Mayo, PL8 1EL

Dartmouth Rockpooling - Castle Cove

Sat 20th May 11am - 1pm
South Devon AONB

Join our AONB Estuaries Officer to explore and discover more about the marine life on, in and under the Castle Cove shore. Steep steps down to the shore - uneven shore - slippery seaweed covered rocks, dogs under close control. Wear wellies, free.

Meet at top of steps down to Castle Cove, by Dartmouth Castle, TQ6 0JN





Orchard Farm Open Day

Sun 28th May 2pm - 4pm

Joe and Jess Clarke, Orchard Farm

A Farm Walk-and-Talk around this nature-friendly coastal farm above the stunning Mothecombe Beach looking at how a multitude of habitats can form a vital part of the farming landscape. Joe and Jess will discuss how they mob-graze their flock of very friendly Coloured Ryeland Sheep in a farming enterprise that seeks to work with nature at every turn. **Booking preferred, email joeclarke1988@gmail.com.** Parking at Mothecombe beach car park (free for open day visitors) Free.

Meet at Mothecombe Stables, Mothecombe, PL8 1LB



Farm walk - South Down Farm

Thurs 1st June 6pm - 8pm

National Trust

Join a National Trust ranger for a guided tour of this important and stunning coastal farm. Learn how the Trust and the tenants have been working hard to improve the value of the farm for wildlife and how they are working as a partner in South Devon AONB's Life on the Edge project. Uneven footpaths, around 2-3 miles. **Booking essential** see www.nationaltrust.org.uk/visit/devon/east-soar/events Free but donations welcome.

Meet at Southdown Farm, Malborough, Kingsbridge TQ7 3DU

Seashore crafts - other dates available online

Mon 29th May 11am - 3pm

Devon Wildlife Trust

Join Devon Wildlife Trust for some seashore themed arts and crafts! All children must be accompanied by an adult and we suggest this event is for children aged 2 years+. See website for more details and to **book** - www.wemburymarinecentre.org. £3 per child plus booking fee.

Meet at Wembury Marine Centre, PL9 OHP

Bat walk

Tues 30th May approx 8pm - 10pm
Slapton Ley Field Centre & National Nature Reserve

Explore the night-time world of these magical creatures. Watch them emerge from their roost, follow their foraging routes and use our bat detectors to hear their weird and wonderful calls. Sensible outdoor clothing and footwear will be needed, bring a torch. **Booking essential** see www.field-studies-council.org/whats-on-at-slapton-ley Adult £8, child £5.

Meet at Slapton Ley Field Centre TQ7 2QP

Guided wildlife canoe tour

Tues 30th May 3.30pm - 5.30pm

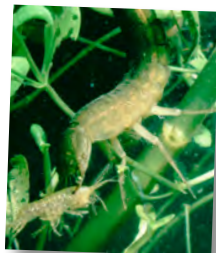
Singing Paddles

Explore the Bowcombe Creek area of the Salcombe/Kingsbridge estuary. The canoes are easily controlled and paddled by beginners. This quiet creek offers the chance of some interesting wildlife encounters, a look at the industrial archaeology and try some challenges. **Booking essential** see www.singingpaddles.co.uk. Adult £35, child £15.

Meet at Newbridge on Bowcombe Creek, Kingsbridge TQ7 2DH

What Lurks Beneath

Wed 31st May 10am - 12 noon
Field Studies Council



Get ready to explore with pond dipping in Slapton Ley and discover anything from damselfly nymphs to dragons. Sensible outdoor clothing and footwear will

be needed. **Booking essential**, see www.field-studies-council.org/whats-on-at-slapton-ley Adult £8, child £5.

Meet at Slapton Bridge, Sands Road, Slapton. TQ7 2QW

Reclusive Reptiles

Thurs 1st June 10am - 12 noon

Field Studies Council

Join us for a reclusive reptile ramble along Slapton Sands. Sensible outdoor clothing and footwear will be needed.

Booking essential, see www.field-studies-council.org/whats-on-at-slapton-ley Adult £8, child £5.

Meet at Slapton Bridge, Sands Road, Slapton. TQ7 2QW

Night time rockpool safari - other dates available online

Thurs 1st June 9.30pm - 11pm
Devon Wildlife Trust

Join DWT staff and volunteers for the first of this season's night-time rockpool safaris! The expert team will take you on a guided tour by torchlight to meet some of Wembury's most famous inhabitants and see what they get up to after dark! See website for more details and to **book** - www.wemburymarinecentre.org. £8.50 plus booking fee. Meet at Wembury Marine Centre, PL9 OHP

Twixt Totnes and Dartmouth - a time traveller's valley

Friday 2nd June 10am - 2pm

Valerie Belsey

A roughly 3-4 mile long walk takes you along a valley by the Dart and shows you how green lanes were once important highways for those who worked the countryside. This walk is featured in Exploring Green Lanes in the South Hams and led by the author. Bring a drink and wear suitable clothing and footwear. **Booking essential** email

Dart Estuary saltmarsh, reedbeds and mudflats ... what's the story?

Mon 5th June 11.30am - 1.30pm

South Devon AONB

Join our AONB Estuaries Officer to discover how and why our estuary saltmarshes, reedbeds and even the mudflats are so important to us and teaming with life adapted to the difficult conditions found there. Easy walk along surfaced waterside footpath - dogs on leads permitted. Free.

By the Longmarsh Car Park public slipway - Totnes TQ9 5UH



valeriebelsey@gmail.com.

Adults £4 (free if arrive by public transport, bike or on foot).

Meet at Cornworthy village hall, Cornworthy TQ9 7ES

Brixham fish market tour

7th, 21st, 28th June 6.15am - 9am

See page 21 for event details

Trailblazing at 50!

Thurs 8th - Wed 14th June

South Devon section

South West Coast Path Association

The AONB team will be out supporting the Coast Path team as they walk the path to commemorate their 50th anniversary and the people and places along the route of Britain's longest National Trail. The walks will be going on during May and June, see www.southwestcoastpath.org.uk for more details and to **book** your free place. Various meeting points each day

Sharpham Summer celebration day and Wildlife BioBlitz

Sat 10th June 10.30am - 4pm

The Sharpham Trust

Visit Sharpham House and grounds in one of the rare moments when this mindfulness retreat centre and nature charity opens the doors of its Georgian mansion. The day includes walks, music, family and nature-themed activities, and refreshments. As well as all this you can join in finding and recording the different species of animals and plants on the lottery supported rewilding fields of the Sharpham Estate.

Booking essential, see www.sharphamtrust.org/events. Free (parking £5, free shuttle bus from Totnes).

Meet at Sharpham House, Ashprington TQ9 7UT



Life on the Edge



Wildflower walk

Sunday 18th June

10.30am-12.30pm

National Trust led by Dr Ken Neal

Walk with an expert to discover the botanical diversity on Southdown Farm and the importance of coastal rich grasslands for rare and endangered insects. Learn about the Trust's management of this wildlife friendly farm and how they are working as a partner in South Devon AONB's Life on the Edge project. Uneven footpaths, around 2-3 miles.

Booking essential, see www.nationaltrust.org.uk/visit/devon/east-soar/events Free but donations welcome.

Meet at Southdown Farm, Malborough, Kingsbridge TQ7 3DU

LEAF OPEN FARM SUNDAY



11th JUNE 2023

www.farmsunday.org

VISIT A FARM AND DISCOVER THE WORLD OF FARMING

Open Farm Sunday at Daynes Farm

Sun 11th June 11am - 4pm

The Camp family

Come and meet farmer David Camp and find out how he manages his organic farm. Explore the farm, see the cows, goats, chicks, sheep and lambs. Find out what crops David grows to feed his stock, watch the sheep shearing, spinners and have a go at a quiz. <https://daynesfarm.com>
Meet at Daynes Farm, Harberton, TQ9 7FB



Guided wildlife canoe tour

Sat 17th June 4.30pm - 7.30pm

Singing Paddles

Using safe, stable and social canoes this guided tour explores the top of the Avon estuary. The canoes are easily controlled and paddled by beginners. This quiet creek offers the chance of some interesting wildlife encounters, a look at the industrial archaeology and try some challenges. **Booking essential** see www.singingpaddles.co.uk. Adult £35, child £15.
Meet at Timbers car park Aveton Gifford TQ7 4JL.

Snorkel safari- other dates available online

Sat 17th June 10am - 12.30pm - other dates available online
Devon Wildlife Trust

Join our fully trained BSAC instructors for a snorkel safari around Wembury Bay. Suitable for beginners or more advanced

snorkellers. Full kit provided. Children must be 8+ to take part. **Booking essential**, see www.wemburymarinecentre.org/events. £27.50 per person.
Meet at Wembury Marine Centre, Wembury. PL9 0HP

Explore the Shore - Ayrmer Cove

Sun 18th June 1pm - 3.30pm
Ian Blackwell & Guy Baker

Explore the history and coastal environment of the South Devon coast - games, foraging, playing, paddling and adventures! This is aimed at individuals, as well as families with children of all ages. Dogs on leads are welcome. Bring beach gear, snacks, water/ drinks. See www.southdevonaonb.org.uk for full details **Booking essential** email bookings@dangerousdads.org.uk. Free (National Trust car park).
Meet at National Trust Car Park, Ringmore TQ7 4HR

Orchard Farm Open Day

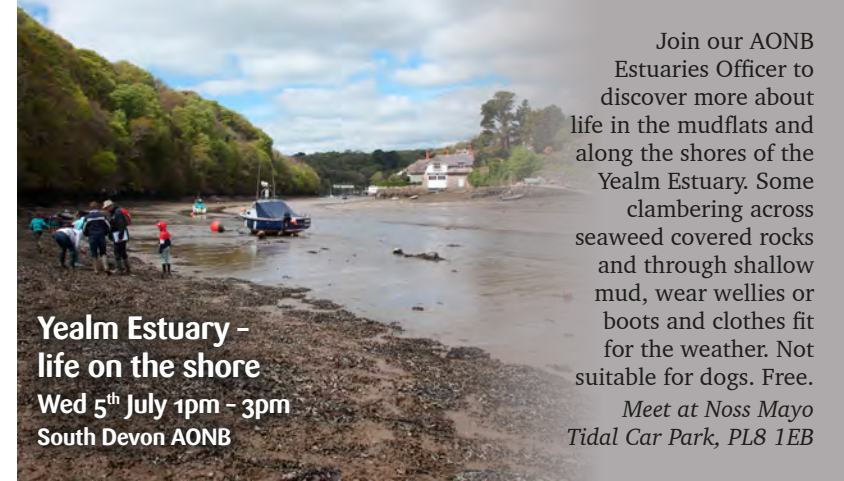
Sat 24th June
2pm - 4pm

See page 26 for event details

Brixham fish market tour

5th, 19th, 26th July
6.15am - 9am

See page 21 for event details



Yealm Estuary - life on the shore

Wed 5th July 1pm - 3pm
South Devon AONB

Join our AONB Estuaries Officer to discover more about life in the mudflats and along the shores of the Yealm Estuary. Some clambering across seaweed covered rocks and through shallow mud, wear wellies or boots and clothes fit for the weather. Not suitable for dogs. Free.

Meet at Noss Mayo Tidal Car Park, PL8 1EB

www.southdevonaonb.org.uk/events. Cost £2 per person.

Meet at Overbecks car park, Sharpitor, Salcombe, Devon, TQ8 8LW

Life on the Edge Celebration Day!

Sunday 2nd July 1pm - 5pm
South Devon AONB and partners

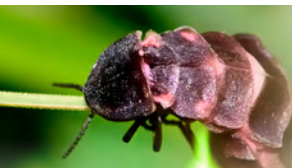
Join us and our partners to celebrate the completion of the development phase of our Life on the Edge project, supported by the National Lottery Heritage Fund. There will be lots to do and see including performances, displays, insect hunting, wildflower walks, bug-based fun and arts activities - not forgetting tea and cake!

You can also find out what is planned for the next 5 year phase and how landowners along the South Devon coast are making huge differences for coastal insects and species rich grasslands. See www.southdevonaonb.org.uk for more details nearer the time. Free event supported by the National Lottery Heritage Fund.
Meet at Wembury Barton Farm, Wembury PL9 0EE, please follow signs on the day for parking

Farm walk - South Down Farm

Thurs 6th July 6pm - 8pm

See page 26 for event details



Life on the Edge Glow worm hunt!

Friday 23rd June 9pm - 11pm
South Devon AONB with John Walters

Enjoy the real nightlife of the AONB and Life on the Edge! Join us for a special night hike looking for glow worms, some of our most magical creatures, with naturalist John Walters. Wrap up warm and bring a torch. The route will involve walking on uneven footpaths and a climb up to the headland and is not suitable for people with walking difficulties or children under 14. **Booking essential**, see





Block Printing Workshop

Sat 8th July 10am - 4pm

Linnet workshops

Discover the joy of creating your very own repeating patterns and two layer block prints. Be inspired by the glorious Mothecombe Gardens and surrounding countryside. All materials included. Please bring an apron.

Booking essential, see www.linnetworkshops.co.uk. Adults £58.

Meet at The Stables at Mothecombe Gardens, PL8 1LB.

Fleet Mill meanderings, a walk into nearby farming country above the Dart

Sat 8th July 11am - 3pm

Valerie Belsey

A roughly 4-5 mile long walk takes you far away from foody Totnes to enjoy the hidden countryside between Totnes and Stoke Gabriel. This walk is featured in Exploring Green Lanes in the South Hams and led by the author. Bring a drink and wear suitable clothing and footwear. **Booking essential**, email valeriebelsey@gmail.com. Adults £4 (free if arrive by public transport, bike or on foot).

Meet at the junction of Western Lane and Dukes Road, Bridgetown, Totnes, TQ9 5XZ

Seals and Dolphin Dart Cruise

Mon 10th July 5pm - 9pm

Wed 26th July 5pm - 9pm

Mike Langman

The Dart estuary and coastal waters just beyond are perhaps the best place in the SW for seeing both species of seal on this evening 4hr cruise. At sea in July there's a very good chance of spotting two species of Dolphin too. See website for more details and to **book** www.mikelangman.co.uk. Adult £40, child £30.

Meet at the Marina car park above Kingswear passenger ferry pontoon, Kingswear TQ6 0AA

Man Sands mini summer natural history walk

Fri 14th July 9am - 12.30pm

Mike Langman

Man Sands holds a surprising amount of biodiversity, most of us know it for its birds but there's a fantastic array of other wildlife there too, butterflies, dragonflies, beetles and reptiles. We'll spend some time searching and hopefully watching a very special species - the Wall Lizard with its restricted or isolated



populations in the UK. See website for more details and to **book** www.mikelangman.co.uk. Adult £13, child £6.

Meet at National Trust Man Sands car park, Wood Huish Nr Kingswear TQ6 0EF

Tots and toddlers rockpool safari

Sat 15th July 10.30am - 11.30am, other dates available online

Devon Wildlife Trust

Join the DWYT staff and volunteers for a mini rockpool session aimed at preschool children. All children must be accompanied by an adult. See website for more details and to **book** - www.wemburymarinecentre.org. £5.50 per child.

Meet at Wembury Marine Centre, Wembury. PL9 0HP

Guided wildlife canoe tour

Sat 22nd July 9am - 11am

Singing Paddles

Using safe, stable and social canoes this guided tour explores the Bowcombe Creek area of the Salcombe/Kingsbridge estuary. The canoes are easily controlled and paddled by beginners. This quiet creek offers the chance

of some interesting wildlife encounters, a look at the industrial archaeology and try some challenges. **Booking essential** see www.singingpaddles.co.uk. Adult £35, child £15. Meet at Newbridge on Bowcombe Creek, Kingsbridge TQ7 2DH

Bat walk

Mon 31st July approx 9pm - 11pm

Slapton Ley Field Centre & National Nature Reserve

Explore the night-time world of these magical creatures. Watch them emerge from their roost, follow their foraging routes and use our bat detectors to hear their weird and wonderful calls. Sensible outdoor clothing and footwear will be needed, bring a torch. **Booking essential** see www.field-studies-council.org/whats-on-at-slapton-ley Adult £8, child £5. Meet at Slapton Ley Field Centre TQ7 2QP



Brixham fish market tour

2nd, 9th, 16, 23rd, 30th August 6.15am - 9am

See page 21 for event details

Guided wildlife canoe tour

Thurs 3rd Aug 9am - 11am

Singing Paddles

Using safe, stable and social canoes this guided tour explores the Bowcombe Creek area of the Salcombe/Kingsbridge estuary. The canoes are easily controlled and paddled by beginners. This quiet creek offers the chance of some interesting wildlife encounters, a look at the industrial archaeology and try some challenges. **Booking essential** see www.singingpaddles.co.uk. Adult £35, child £15.

Meet at Newbridge on Bowcombe Creek, Kingsbridge TQ7 2DH

Guided wildlife canoe tour with cream tea

Mon 7th Aug 9am - 12 noon

Singing Paddles

A 3hr tour where we can travel that little bit further to explore more of the estuary and its wildlife. There will be a supply of Devon clotted cream and strawberry conserve to make the trip more memorable. The only decision to make is whether to have coffee, tea or hot chocolate to go with the scones! **Booking essential** see

www.singingpaddles.co.uk

Adult £40, child £20.

Meet at Newbridge on Bowcombe Creek, Kingsbridge TQ7 2DH

Celebrate Start Bay Festival

Sun 13th Aug 11am - 5pm

Field Studies Council

Do you love the outdoors and environment? Music, stories, demonstrations, and talks will be on throughout the day. Local sustainable stall holders will be selling their products, Free hands-on environmental activities will be put on by local charities, and food and drinks will keep you refreshed throughout the day. Free entry, parking £5.

Meet at Slapton Ley Field Centre TQ7 2QP



Snorkel safari

Wed 16th August 10am - 12.30pm - other dates available online

Devon Wildlife Trust

Join our fully trained BSAC instructors for a snorkel safari around Wembury Bay. Suitable for beginners or more advanced snorkellers. Full kit provided. Children must be 8+ to take part. **Booking essential**, see www.wemburymarinecentre.org/events. £27.50 per person.

Meet at Wembury Marine Centre, Wembury. PL9 0HP

What Lurks Beneath

Wed 16th Aug 10am - 12 noon

Field Studies Council

Get ready to explore with pond dipping in Slapton Ley and discover anything from damselfly to dragons. Sensible outdoor clothing and footwear will be needed. **Booking essential**, see www.field-studies-council.org/whats-on-at-slapton-ley Adult £8, child £5.

Meet at Slapton Bridge, Sands Road, Slapton. TQ7 2QW



Bat walk

Mon 21st Aug approx
9pm - 11pm

See page 31 for event details

Guided wildlife canoe tour - Bats and bioluminescence!

Mon 21st Aug 7pm - 10pm
Singing Paddles

Getting on the water at dusk we will canoe down the creek and listen to bats navigating along the tree line, flying out over the water and even catching insect prey. The different calls of the bats can also indicate their species; Devon is home to 17 of the 18 species of bat found in the UK. This is our blue-ribbon event!

Booking essential see www.singingpaddles.co.uk
Adult £40, child £20.

Meet at Newbridge on Bowcombe Creek, Kingsbridge TQ7 2DH

Orchard Farm Open Day

Sat 26th Aug 2pm - 4pm
Joe and Jess Clarke, Orchard Farm

A Farm Walk-and-Talk around this nature-friendly coastal farm above the stunning Mothecombe Beach looking at how a multitude of habitats can form a vital part of the farming landscape. Joe and Jess will discuss how they mob-graze their flock of very friendly Coloured Ryeland Sheep in a farming enterprise that seeks to work with nature at every turn. **Booking preferred**, email joeclarke1988@gmail.com. Parking at Mothecombe beach car park (free for open day visitors). Free.

Meet at Mothecombe Stables, Mothecombe, PL8 1LB

Pirate Days!

Sat 26th and Sun 27th Aug
11am - 3pm
Devon Wildlife Trust

Ahoy Shipmates! Drop anchor at Wembury Marine centre for some pirate fun and games over the weekend. See website for more details and to **book** - www.wemburymarinecentre.org. Child £3 plus booking fee. Meet at Wembury Marine Centre, PL9 OHP

Night time rockpool safari - other dates available online

Tues 29th August
10pm - 11.30pm

See page 26 for event details

Pebbles on the Beach

Tues 29th August
10am - 12 noon

See page 21 for event details

Around Beesands, strand and land

Wed 30th August 10.30am - 3pm
Valerie Belsey

A roughly 3-4 mile long walk passes by impressive slate quarry workings and through the grounds of a WWII Headquarters. This walk is featured in Exploring Green Lanes in the South Hams and led by the author. Bring a drink

and wear suitable clothing and footwear. **Booking essential** email valeriebelsey@gmail.com. Adults £4 (free if arrive by public transport, bike or on foot). Meet at the tank, Torcross car park, TQ7 2SE



Between the tides

Sat 2nd Sept 2pm - 4.30pm
Field Studies Council

Explore life between the tides as we explore East Prawle's stunning rocky shore environment. From giant kelp fronds to miniature anemones, every rock pool holds a secret ecosystem waiting to be discovered. **Booking essential**, see www.field-studies-council.org/whats-on-at-slapton-ley
Adult £8, child £5.

Meet at East Prawle village Green, Chivelstone TQ7 2DF

Brixham fish market tour

13th, 20th, 27th Sept
6.15am - 9am

See page 21 for event details



Explore the Shore - East Prawle

Sun 3rd Sept 1pm - 3.30pm
Ian Blackwell & Guy Baker

Explore the history and coastal environment of the South Devon coast - games, foraging, playing, paddling and adventures! This is aimed at individuals, as well as families with children of all ages. Dogs on leads are welcome. Bring beach gear, snacks, water/ drinks. See www.southdevonaonb.org.uk

for full details **Booking essential** email bookings@dangerousdads.org.uk. Free. Meet at East Prawle Village Green, TQ7 2BY

Adult rockpool safari

Tues 5th Sept 3-4.30pm
Devon Wildlife Trust

Join Devon Wildlife Trust for a adults only Rockpool Safari and we'll take you on a guided tour of some of the best rockpools in the UK! See website for more details and to **book** - www.wemburymarinecentre.org. Adult £5.50.

Meet at Wembury Marine Centre, PL9 OHP

Adult snorkel safari

Wed 6th Sept 1.30pm - 3pm
Devon Wildlife Trust

Join Devon Wildlife Trust for a adults only snorkel safari and we'll take you on an underwater tour of stunning Wembury

Bay! See website for more details and to **book** - www.wemburymarinecentre.org. Adult £27.50. Meet at Wembury Marine Centre, PL9 OHP

Dart Estuary Wildlife and Osprey Cruise

Mon 11th, 25th & Tues 25th Sept
8am - 12pm
Mike Langman

These cruises offer a great opportunity to search the notoriously tricky estuary to watch successfully from land. We'll be looking for all the birds and wildlife on the river and hopefully Ospreys too. In 2022 two or three Ospreys were seen on each Cruise. See website for more details and to **book**. www.mikelangman.co.uk. Adult £13, child £6. Meet at the Marina car park above Kingswear passenger ferry pontoon, Kingswear TQ6 0AA

Discover more about the heritage of the Bolt Head to Bolt Tail headland and the stories that have shaped the landscape right back to 11,000 years ago! There will be tours around the archaeological dig site which has been taking

place on Bolt Tail Scheduled Monument all week as well as a chance to find out more about the wider project and what we have found! There will be displays, activities and guided walks throughout the afternoon, see www.southdevonaonb.org.uk/events

for more details nearer the time. This activity is part of the National Heritage Open Days scheme. Meet at Bolt Tail Hillfort, Hope Cove TQ7 3HP What3Words relief:beyond.star



Heritage Open Day - South Devon Coastal Heritage project

Saturday 16th Sept
1pm - 4pm

South Devon AONB and partners



Great British Beach Clean 2023 - Scoble Bay

Fri 22nd Sept 9am - 11.30am
South Devon AONB and
Till the Coast is Clear

Help us collect, survey and record the litter found along this bay that we have been surveying for over 20yrs. No dogs and not suitable for toddlers - site accessed by boats and some crossing seaweed covered rocks.

Booking essential see www.southdevonaonb.org.uk Free.
Meet at Batson creek slipway, Salcombe TQ8 8DU



Salcombe - Shipwrights and sailors

Sat 16th Sept 10.30am - 1.30pm
Valerie Belsey

A roughly 2-3 mile long walk around Salcombe - see the valley which provided shipwrights with their timbers and imagine the days when pirates from the Caribbean once landed here. This walk is featured in Exploring Green Lanes in the South Hams and led by the author. **Booking essential** email valeriebelsey@gmail.com. Adults £4 (free if arrive by public transport, bike or on foot).

Meet at North Sands car park, Cliff Rd, Salcombe TQ8 8LD

Seagrass meadows - what's all the fuss about?

Sat 30th Sept 12.30pm - 2pm
South Devon AONB

Take advantage of one of the lowest tides of the year and join our AONB Estuaries Officer to take a closer look at some of the seagrass right on Salcombe's doorstep. Discover how these flowering plants support a jungle of marine life and why they and some of our other estuarine ecosystems are so important to our net zero carbon future. Wear wellies or boots and dress for the weather. Dogs permitted on short leads, owners must bring poo bags and be aware of sharp objects on the shore. Not suitable for toddlers - site accessed by boats and some crossing seaweed covered rocks. Free.
Meet opposite the Harbour Office, Whitestrand, Salcombe TQ8 8BU



Night time rockpool safari - other dates available online

Wed 27th Sept 10pm - 11.30pm
See page 26 for event details

Sharpham Apple Day

Sun 1st Oct 10.30am - 3.30pm
The Sharpham Trust

Join Sharpham staff and volunteers in pressing the organic apples grown in the Sharpham Trust



organic orchards. Sharpham House won't be open, but event visitors will be allowed to enjoy the beautiful grounds, nature themed activities as well as enjoying light lunches and cakes and drinks including apple juice in the cafe.

Booking essential, see www.sharphamtrust.org/events. Free (parking £5, free shuttle bus from Totnes).

Meet at Sharpham House, Ashprington TQ9 7UT

Shoresearch volunteer survey - other dates available online

Mon 2nd Oct 1pm - 3pm
Devon Wildlife Trust

Take part in Shoresearch - The Wildlife Trust's national citizen science survey of the intertidal shore - where the sea meets the land! project for See website for more details and to **book** - www.wemburymarinecentre.org. Free.

Meet at Wembury Marine Centre, PL9 OHP

Brixham fish market tour

4th, 5th, 11th, 12th Oct
6.15am - 9am

See page 21 for event details



Kingswear's Packhorse Paths

Sat 7th Oct 11am - 3pm
Valerie Belsey

A roughly 3-4 mile long walk to see the valleys which lead down to the sea and where smugglers once trod through manor lands. This walk is featured in Exploring Green Lanes in the South Hams and led by the author. Bring a drink and wear suitable clothing and footwear. **Booking essential** email valeriebelsey@gmail.com. Adults £4 (free if arrive by public transport, bike or on foot).

Meet at the bus stop at Hillhead, near Brixham TQ5 OBL

Fungal Foray

Sat 7th Oct
10am - 12 noon
Field Studies Council

Join a guided exploration of the local area around Slapton and discover which fabulous fungi are flourishing this year. Sensible outdoor clothing and footwear will be needed. **Booking essential**, see www.field-studies-council.org/whats-on-at-slapton-ley Adult £8, child £5.

Meet at Slapton Ley Field Centre TQ7 2QP



Dart Estuary Wildlife and Osprey Cruise

Tues 10th Oct 8am - 12pm
Mike Langman

These cruises offer a great opportunity to search the notoriously tricky estuary to watch successfully from land. We'll be looking for all the birds and wildlife on the river and hopefully Ospreys too. In 2022 two or three Ospreys were seen on each Cruise. See website for more details and to **book** www.mikelangman.co.uk. Adult £13, child £6.

Meet at the Marina car park above Kingswear passenger ferry pontoon, Kingswear TQ6 0AA

Birds of Slapton Ley

Mon 23rd Oct
4pm - 6pm
Field Studies Council

Learn about and experience the

incredible variety of birds here at Slapton Ley National Nature Reserve. Sensible outdoor clothing and footwear will be needed. **Booking essential**, see www.field-studies-council.org/whats-on-at-slapton-ley. Adult £8, child £5.

Meet at Slapton Ley Field Centre TQ7 2QP

Keeping in touch with the South Devon AONB

Our website is hugely popular and up to date, with all of our news, great views and ideas of how to get out and enjoy the AONB, as well as information on project work and the Partnership.



www.southdevonaonb.org.uk

Our facebook page is a great place to catch up on news snippets, find out what we are up to and share photos. We have a fan page, so click on the 'like' button and you will receive our newsfeed direct to your page.



www.facebook.com/sdevonaonb

For those who 'tweet', you can follow us



[@southdevonaonb](https://twitter.com/southdevonaonb)

Or for sharing photos



www.instagram.com/southdevonaonb

Check out our YouTube channel too



www.youtube.com/@southdevonaonb1

We produce a regular news e-bulletin and monthly events e-listings. Sign up for free bulletins on our website.



www.southdevonaonb.org.uk

Alternatively, you can always email



enquiries@southdevonaonb.org.uk

or even pick up the phone, and actually talk to us!



01803 229330

For more information

Dartmouth

01803 834224

hello@visitdartmouth.uk

www.visitdartmouth.uk

Kingsbridge

01548 853195

info@hellokingsbridge.co.uk

www.hellokingsbridge.co.uk

Ivybridge

01752 897035

info@ivybridgewatermark.co.uk

www.ivybridgewatermark.co.uk

Modbury

01548 831427

enquiries@modburytic.org.uk

www.modburytic.org.uk

Salcombe

01548 843927

info@salcombeinformation.co.uk

www.salcombeinformation.co.uk

Totnes

01803 269190

info@visittotnes.co.uk

www.visittotnes.co.uk

Visit South Devon

www.visitsouthdevon.co.uk

There are lots more fabulous events on our website!

www.southdevonaonb.org.uk

Photo credits: P15 © The Darke Family, © Orchard Farm, P16 - P17 © John Walters
© Hayley Herridge © Karim Vahed. All other images © South Devon AONB Unit
Designed by South Hams District Council. Printed by www.pollardsprint.co.uk

Carbon Neutral logos to go here