

# **AONB Partnership Committee Meeting**

to be held at

**10:15am on Friday 10 March 2023**

## **Hybrid Meeting**

Repton Room at Follaton House and via Zoom

## **Agenda & Papers**



South Devon AONB Staff Unit, Follaton House, Totnes, TQ9 5NE  
Telephone 01803 229330      Email [enquiries@southdevonaonb.org.uk](mailto:enquiries@southdevonaonb.org.uk)

## **AONB Partnership Committee Membership**

### **Members nominated by local authorities**

Devon County Council	Cllr Roger Croad Cllr Jonathan Hawkins (officer advising Peter Chamberlain)
Plymouth City Council	Mike Oxford
South Hams District Council	Cllr Nicky Hopwood Cllr Bernard Taylor (officer advising Graham Swiss)
Torbay Council	Cllr Anne Brooks (officer advising Tracy Brooks)

### **Members nominated by statutory agencies**

Environment Agency	Emma Magee
Forestry Commission	Jacob Taylor
Historic England	Ross Simmonds
Natural England	Eamon Crowe Becky Hughes

### **Members co-opted by the AONB Partnership Committee**

Independent	John Green (Chair)
National Trust	Richard Snow
Plymouth University	John Martin (Vice Chair)
South West Coast Path Association	Ken Carter

### **Community Representatives**

Amenity groups	Penny Mills
Business community	Gary Jolliffe
Coast and marine sector	Natasha Bradshaw
Community/voluntary groups	Peter Sandover
Environmental organisations (NGOs)	Ed Parr-Ferris
Landowning/farming community	Charles Wreford-Brown
Parish Councils	Liz Hitchins
Tourism community	Laura Campbell

#### *AONB Unit staff attending*

AONB Manager	Roger English
AONB FiPL Officer	Henry Lucas
AONB Office Manager	Vanessa Gray

#### *Also attending*

South Hams District Council	Chris Shears
-----------------------------	--------------

## Agenda

Item 1	Public statements	
The formal meeting and live recording to YouTube immediately follows the public statement session		
Item 2 (5 mins)	Introductions & apologies for absence	
Item 3	Declarations of Interests	
Item 4 (5 mins)	Minutes of the last Partnership Committee meeting (25 November 2022) for approval and any matters arising	Page 2
Item 5 (15 mins)	<b>South Devon AONB Management</b> 5a) UK Shared Prosperity Fund: South Hams DC Investment Plan and England Rural Prosperity Fund	Page 15
(15 mins)	5b) Farming in Protected Landscapes	Page 17
(10 mins)	5c) Environmental Land Management Schemes	Page 23
(10 mins)	5d) Defra 'Access for All' funding to protected landscapes	Page 25
(10 mins)	5e) South Devon AONB Unit priorities for 2023/24 financial year	Verbal
Item 6 (5 mins)	<b>National Matters</b> 6a) Environmental Improvement Plan	Verbal
(15 mins)	6b) National Association for AONBs news	Verbal
Item 7 (25 mins)	<b>Partner updates</b> – partner contributions to <b>conserving and enhancing the South Devon AONB and AONB Management Plan priorities</b> – recent, current and/or year ahead.  A summary of the 10 <sup>th</sup> March meeting of the AONB Core Funding Group will be provided during this item	Verbal
Item 8 (5 mins)	<b>South Devon AONB Partnership Matters</b> 8a) Vote of thanks for John Green, our outgoing AONB Partnership Chair	Verbal
Item 9	<b>For Information</b> 9a) Planning update 9b) Undergrounding of Overhead Power Lines	Annex Page 29

## ITEM 4 Approval of Minutes & Matters Arising

### MINUTES OF THE MEETING OF THE SOUTH DEVON AREA OF OUTSTANDING NATURAL BEAUTY PARTNERSHIP COMMITTEE HYBRID MEETING HELD AT FOLLATON HOUSE AND VIA ZOOM ON FRIDAY 25 NOVEMBER 2022

#### INTRODUCTIONS & APOLOGIES FOR ABSENCE

##### Those present were:

Peter Chamberlain	PC	Devon County Council
Emily Browne	EB	Plymouth City Council (for Mike Oxford)
Cllr Bernard Taylor	BT	South Hams District Council
Graham Swiss	GS	South Hams District Council
Cllr Anne Brooks	AB	Torbay Council
Tracy Brooks	TB	Torbay Council
Emma Magee	EM	Environment Agency <i>does not work Friday's</i>
Eamon Crowe	EC	Natural England
Becky Hughes	BH	Natural England
John Green	Chair	Independent
Richard Snow	RS	National Trust
John Martin	Vice-chair	Plymouth University
Bob Mark	BM	South West Coast Path Association (for Ken Carter)
Penny Mills	PM	Representative: amenity groups
Natasha Bradshaw	NB	Representative: coast and marine
Peter Sandover	PS	Representative: community/voluntary groups
Ed Parr Ferris	EPF	Representative: environmental organisations (NGOs)
Liz Hitchins	LH	Representative: parishes

##### AONB staff present

Roger English	RE	AONB Manager
Adam Davison	AD	AONB Project Officer
Rob Skinner	RS	AONB Life on the Edge Project Manager (to present)
Vanessa Gray		AONB Office Manager (to take notes)

##### Apologies for absence were received from:

Cllr Roger Croad	Devon County Council
Mike Oxford	Plymouth City Council (Emily Browne attending)
Cllr Nicky Hopwood	South Hams District Council
Ken Carter	SWCPA (Bob Mark attending)
Charles Wreford-Brown	Representative: landowning/farming
Laura Campbell	Representative: tourism

##### Observers

Live broadcast to YouTube was not possible due to technical difficulties. A recording was uploaded to the South Devon AONB YouTube channel immediately post-meeting.

## 2. PUBLIC STATEMENTS

### 2.1 No public statements.

**3. DECLARATIONS OF INTERESTS**

- 3.1 No interests were declared.

**4. MINUTES OF THE 9 SEPTEMBER 2022 PARTNERSHIP COMMITTEE MEETING FOR APPROVAL & ANY MATTERS ARISING**

- 4.1 Minutes of the last meeting were accepted.

4.2 Progress on Actions:

4.2.1 ACTION 1: Circulate Chair profile

Peter Sandover has been duly elected as Partnership Committee Chair for a term of three years, to take effect when the current Chair steps down in March 2023.

John Martin has been duly elected as Vice-Chair for a further term of three years from March 2023.

4.2.2 ACTION 2: Inform local authorities the South Devon AONB Partnership Committee have voted in favour of delaying a substantive review of the Management Plan and request their decision on this matter.

Update from the AONB Manager: All local authorities are aware of the Partnership Committee decision however the route to signing the process off differs by authority. At the Devon AONB Managers' forum held yesterday, a common route in terms of reports and statements was established; we are now positioned to progress this with each of the four local authorities.

**5A DEVON LOCAL NATURE RECOVERY STRATEGY, NATIONAL AND DEVON NATURE RECOVERY NETWORKS**

The AONB Manager gave a presentation.

5a.1 Additional resources

- i. Devon Local Nature Recovery Strategy introductory video  
<https://www.youtube.com/watch?v=L6ffd5dsV68>
- ii. There is an opportunity to complete a short survey<sup>1</sup> on the developing Devon, Torbay and Plymouth Local Nature Recovery Strategy via the Devon LNP website.

5a.2 In discussion

- i. EC: Natural England now has a dedicated Devon LNRS officer in post: Cathy Fitzroy.

**5B SOUTH DEVON AONB NATURE RECOVERY PLAN**

The AONB Project Officer supplied information for the meeting papers and provided a presentation.

5b.1 Additional resources

- i. State of Nature report available on the South Devon AONB website  
<https://www.southdevonaonb.org.uk/state-of-nature/>

5b.2 Observations and in discussion

- i. A Nature Recovery Plan working group is in existence and AONB partners are invited to get involved by joining the working group or dropping in on individual sessions – contact the AONB Projects Officer if interested in joining the working group or attending a session.

---

<sup>1</sup> [https://forms.office.com/Pages/ResponsePage.aspx?id=gzehjWjLP0S7S5I\\_d\\_1b--EzJy4BjB9Gv94RbxE\\_5-hUNDJYTU84QTdEUjZONldJVEExMThtXTedPMY4u](https://forms.office.com/Pages/ResponsePage.aspx?id=gzehjWjLP0S7S5I_d_1b--EzJy4BjB9Gv94RbxE_5-hUNDJYTU84QTdEUjZONldJVEExMThtXTedPMY4u)

- ii. PS: A number of parishes have designated green space and designated green corridors that are mapped at local level that could be incorporated into the Plan. It is worth connecting with community volunteers to get further details.
- iii. Responding to a request for clarification on the definition of marginal land, the AONB Project Officer explained that the definition used for the Nature Recovery Plan document to consider whether land is marginal is as follows:
  - Land that is identified through the Agricultural Land Classification as grade 4/5
  - Over 20% slope.

Marginal land may be considered as having greater opportunity for developing nature conservation approaches.

- iv. PS: To what extent will marine aspects be covered in the document?

BM: there is very little information off the coast on the map at the moment. Digital sediment data in relation to mapping sediment zones is available.

- a. AD: coast/marine is an area where most challenges lie so would like anyone who can support this work or who has a specialism to reach out. Would like to generate funding for partnership work to undertake a seascape character assessment and have integration with the landscape character assessment.

**ACTION 1 (AD): ARRANGE A CALL WITH BOB MARK TO DISCUSS MARINE ASPECTS IN FURTHER DETAIL.**

- v. EPF:
  - Have raised the marine aspect with AD and currently looking at this at county level. Looking to link up with universities who could also look into the marine side.
  - Hope the plan will evolve to take into account the developing county NRN as well as the work taking place at national level.
  - Other works are taking place: welcome the points raised by PS regarding Neighbourhood Plans; Plymouth City Council have some work around social indicators for local Nature Recovery strategies.
  - Looking at how to link this to other things, for example carbon and natural flood management.
  - Need to take into account what we already have for example county wildlife sites and push to ensure these are in the best state they can be and to designate more.
  - Well done to AD and the team for pulling this together.
- vi. EM: There is a Natural Flood Management Toolbox, NFM Studio, produced by the CaBA partnership that is of particular use for marginal land including field slope.  
EPF: The ambition is to link NFM Studio to the Devon NRN map - not directly but through identifying complementary and conflicting opportunities for both.

## **5C LIFE ON THE EDGE PROJECT**

Rob Skinner, LotE Project Manager, provided an update on the Life on the Edge project.

### **5c.1 Discovery and additional resources**

- i. The brown-banded Carder bee has been rediscovered on the South Devon coast as part of the Life on the Edge project<sup>2</sup>.

*Post meeting update: the rediscovery of this bee has attracted significant local and national news coverage.*

- ii. The Introduction to oil beetles first workshop is available to view on the South Devon AONB YouTube channel<sup>3</sup>.

## 5c.2 Observations and in discussion

- i. Chair: Need to consider how to publicise the volunteering and the talks.
- ii. EM: FSC Biolinks<sup>4</sup> is a Field Studies Council biodiversity project running from 2018-2022. There are courses and resources and the project has trained people nationally. As the project is coming to an end in 2022, there may be resources that can be handed over and volunteers who wish to continue using their new skills.

### **ACTION 2 (RS): RS TO FOLLOW UP POTENTIAL HANDOVER OF RESOURCES AND OFFER TO TRAINED VOLUNTEERS WITH FSC.**

- iii. LH:
    - Aware the project is working with dementia friendly parishes and will reach out to isolated adults however it would be helpful to reference this in the report.
    - How will work the LotE work with churchyards link into the Nature Recovery Plan? Are churchyards being identified as Nature friendly areas or something special?

RS: Working with David Curry who is leading on this piece of work.

AD: Churches that are not ECO Churches can become so with the support of our project.
  - iv. PM: This is the fifth year CPRE have run a Devon's Best Churchyard competition<sup>5</sup> to find Churchyards good for people and wildlife. Holbeton Church won a highly commended prize this year. Next year it would be good if we could work together to encourage even more churches to enter.
  - v. PS: Can workshops also take place in market towns? Groups are trying to tackle rural isolation.
- RS: We are speaking with gateholder organisations that are working within the main conurbations mentioned in the report however they work across wide areas and also focus on rural areas.
- vi. PS: There appears to be a slight underspend.
- RS: Overall there is no underspend it is just timing of committed spend coming in that makes it appear that way at this stage. The mention of reallocation of spend referred to the five year delivery phase, 2024-2029. Costs are vastly different now to when the budget was put together a year ago and will need to be looked at again. We are unable to ask for more money from the National Lottery so we will be looking at some reallocation of spend, and other budget options.

## 5D SOUTH WEST COAST PATH – NATIONAL TRAIL 50<sup>TH</sup> ANNIVERSARY

---

<sup>2</sup> <https://www.southdevonaonb.org.uk/lost-bumblebee-rediscovered-on-south-devon-coast/>

<sup>3</sup> <https://www.youtube.com/watch?v=GFKAr0-Jz1E>

<sup>4</sup> <https://www.fscbiodiversity.uk/projects/biolinks>

<sup>5</sup> <https://www.cpredevon.org.uk/devons-best-churchyard-competition-2022/>

Ken Carter, SWCPA Trustee, provided an item for the agenda papers. Bob Mark, SWCPA Chair, added the following in the context of the meeting's discussions regarding National Nature Recovery Network and the Local Nature Recovery Plan.

#### 5d.1 Coastal Margin

- i. The term Coastal Margin is used to define a continuous corridor of land seaward of the England Coast Path plus certain categories of land on the inland side. Coastal Margin land provides the basis for public access on foot, although some categories of excepted land exist within the margin that are exempt from public access rights. Coastal Margin land with access rights contributes to 'spreading room' adjacent to the England Coast Path. The coastal margin often includes habitat of high biodiversity value or opportunities for nature recovery.
- ii. The England Coast Path project, delivering more than 2,000 miles of new National Trail, has been mapping the coastal margin.
- iii. The coastal margin offers the opportunity for a green corridor all around the UK coast allowing species migration in response to climate change.
- iv. In South Devon the Coast Path is established, has a massive network of feeder networks and gets local people out and engaged with their environment. There is an opportunity, working with local communities and other stakeholders, to publicise the idea of a green belt around the coast and push funding opportunities that already exist to achieve it.
- v. The SWCPA 50<sup>th</sup> Anniversary<sup>6</sup> will be used to publicise the idea of a green belt and raise awareness of the tremendous amount being achieved for Cultural Heritage, Nature Recovery and Access to the Coastal Corridor and we request you help by publicising the walks and events and help identify potential Trailblazers that have networks and can bring people to the Coast Path.
- vi. Following pilot projects, funding has been made available from the National Lottery Heritage Fund for Coast Path Connectors<sup>7</sup>. This project will run until May 2025 and aims to train 400 volunteers to work with care homes, social prescribing etc. to get people out onto the Coast Path.

#### 5d.2 Observations and in discussion

- i. Trailblazer suggestions can be sent either to the addresses shown on the 50th Anniversary page<sup>6</sup> of the SWCPA website or direct to Bob Mark [chair@southwestcoastpath.org.uk](mailto:chair@southwestcoastpath.org.uk)

### 5E PLYMOUTH FREEPORT/FREEZONE AND INVESTMENT ZONES

Graham Swiss provided a verbal update on Plymouth Freeport/Freezone and Investment Zones.

#### 5e.1 Freeport main points:

- i. Guidance on Freeport Designation<sup>8</sup> is available from the Department for Levelling Up, Housing and Communities. The first paragraph of which was read out at the meeting:  
*"Freeports are special areas within the UK's borders where different economic regulations apply. By delivering investment on specific sites benefitting from tax and customs incentives, Freeports will create thousands of high-quality jobs in some of our most disadvantaged communities. These sites have been carefully selected for their suitability for development by*

---

<sup>6</sup> <https://www.southwestcoastpath.org.uk/Get-involved/50th-anniversary/>

<sup>7</sup> <https://www.southwestcoastpath.org.uk/Get-involved/coast-path-connectors/>

<sup>8</sup> <https://www.gov.uk/guidance/freeports>



*local authorities and key private partners and sit within an outer boundary, which represents the geographical location within which the benefits of Freeports are targeted and does not in itself confer any special tax, customs or other status”*

- ii. The South Devon and Plymouth Freeport is the only one designated in the South West.
- iii. This freeport comprises three sites<sup>9</sup>, two of which are in South Hams:
  - Langage Employment Estate, east of Plympton, north of the A38
  - Part of the Greater Sherford new community, south of the A38
- iv. The third site is in the City of Plymouth, at South Yard.
- v. Each Freeport will benefit from up to £25m seed funding.
- vi. The three sites will potentially benefit from Tax and Customs relaxations and incentives. No planning or other regulatory restrictions regarding environmental controls are proposed.
- vii. The outer boundary is drawn to indicate geographic extent of envisaged economic benefits. No further freeport sites are proposed within the wider area.
- viii. The proposed Tax and Customs relaxations and incentives are within the three sites and not the wider area.
- ix. No further sites within the wider area proposed and no other regulatory relaxations are proposed.

#### 5e.2 Investment Zone main points:

- i. South Hams District Council voted at the October meeting to register an expression of interest in the Plymouth and South Devon Freeport becoming an Investment Zone<sup>10</sup>.
- ii. This would extend Freeport designation benefits over a longer period of time.
- iii. This would not change the status of land or indicate further sites will be designated however it would bring additional tax benefits and extends for a longer period of time.
- iv. Early indications are that the Prime Minister is not in favour of Investment Zones.

#### 5e.3 Observations and in discussion

- i. PM: The phrase that planning rules could be relaxed raised big concerns. Would this be specific to the three designated sites Langage/Sherford/South Yard?  
GS:
  - The regulatory changes relate specifically to the three designated sites and these do not include relaxation of planning controls.
  - There is no proposal to relax planning controls for these sites or the wider area.
  - Although they may not happen, should the Investment Zone designation go ahead, there is indication there may be some further regulatory relaxation to include planning. Government advisers have verbally indicated this would be to speed up the planning decision process rather than relax regulation or policy.

---

<sup>9</sup>

[https://assets.publishing.service.gov.uk/government/uploads/system/uploads/attachment\\_data/file/1077615/Plymouth\\_South\\_Devon\\_Freeport.pdf](https://assets.publishing.service.gov.uk/government/uploads/system/uploads/attachment_data/file/1077615/Plymouth_South_Devon_Freeport.pdf)

<sup>10</sup> <https://www.gov.uk/government/publications/investment-zones-in-england/investment-zones-in-england>

## 6A NATIONAL LANDSCAPES PROSPECTUS AND BRANDING

The AONB Manager noted the detail for this item is contained in the agenda papers together with links to the Landscapes for Life website designation<sup>11</sup> page and also the rebranding report<sup>12</sup> that was considered and approved by the National Association for AONBs Board of Trustees on 13<sup>th</sup> October 2022.

### 6a.1 Observations and in discussion

- i. PS: The prospectus is not outward facing and engaging. Is there another document that promotes the principals to draw more people in?

AONB Manager: The tone and shape of the Prospectus is a consequence of being produced specifically to focus on the Secretary of State for the Environment, the Civil Servant team and the new Minister for Protected Landscapes.

Further work, including outward focussed publications, is planned to follow conclusion of the initial Defra rebranding contract.

- ii. BM: The National Trails family lobbied to be engaged in the Glover Review having been excluded originally and are now part of the National Landscapes family. Out of this a new charity has been formed at national level: National Trails UK. It was decided there should be several focusses; one direction taken was to look into the opportunity for green finance. There is a huge opportunity around green finance for the whole National Landscapes Partnership.
- iii. EM: Very engaging as an initial introduction. Very important message that could be stronger is what AONBs do that no others do and why they exist to do this. Also highlight the value for money that AONBs deliver relative to other designated landscapes.
- iv. AONB Manager: Whist South Devon AONB has signed up to support this, it is not a document we have ownership of. Across the network there are a number of different views and it is heartening to hear what is being said today. View this as a starting point to move forward from.

## 6B HERITAGE COASTS REVIEW

The AONB Manager noted the detail for this item is contained in the agenda papers including links to a short video introducing the review<sup>13</sup> and an executive summary of the full report<sup>14</sup>.

### 6b.1 Observations and in discussion

- i. PC:
  - Heritage Coasts have had less prominence in terms of policy and public understanding. However, of particular importance is the marine environment and inshore waters, especially in Devon where we have a huge overlap with Heritage Coasts and AONBs.
  - The current Management Plan does not give enough weight to Heritage Coast.
  - In the light of this review we have an opportunity to make the most of this.
  - It is good to see the recommendation for small realignment of boundaries in the review to gain consistency and for the focus on the marine environment.

---

<sup>11</sup> <https://landscapesforlife.org.uk/designation/>

<sup>12</sup>

[https://view.officeapps.live.com/op/view.aspx?src=https%3A%2F%2Flandscapesforlife.org.uk%2Fapplication%2Ffiles%2F9716%2F6515%2F0444%2F90\\_221013\\_-\\_04\\_-\\_National\\_Landscapes.docx&wdOrigin=BROWSELINK](https://view.officeapps.live.com/op/view.aspx?src=https%3A%2F%2Flandscapesforlife.org.uk%2Fapplication%2Ffiles%2F9716%2F6515%2F0444%2F90_221013_-_04_-_National_Landscapes.docx&wdOrigin=BROWSELINK)

<sup>13</sup> <https://www.youtube.com/watch?v=e6HqJccCtH8>

<sup>14</sup> [https://www.coastalcommunities.co.uk/knowledge\\_hub\\_files/Heritage%20Coast%20Review%20-%20Final%20Report%20and%20Appendices%20July2022\\_WFNf.pdf](https://www.coastalcommunities.co.uk/knowledge_hub_files/Heritage%20Coast%20Review%20-%20Final%20Report%20and%20Appendices%20July2022_WFNf.pdf)

- There should be some caution regarding the increased asks of AONBs that are already asked to do so much. Any further asks should be associated with more resources to do this with.
- ii. BM: Has any funding come through the designation of Marine Conservation Zones?  
AONB Manager: Not to date however MCZ designation and the repositioning of our partners to focus on the environment attracts new investment.

## 6C ALL ENGLAND ASSESSMENT & STRATEGIC LANDSCAPE MAPPING

Becky Hughes, Natural England Strategic Landscapes Advisor, provided a presentation to give an update on the programme. Further detail and links are included in the agenda papers.

### 6c.1 Main points

- i. All England Strategic Landscape Mapping Project<sup>15</sup> is one of the actions in the NE response to the Landscapes Review.
- ii. The project aims to:
  - Help identify areas which may have potential to be new or extended nationally designated landscapes.
  - Identify places where alternative forms of landscape action or approaches may be more appropriate.
- iii. The web-based interactive maps aid strategic prioritisation and engagement, for example with Green Infrastructure and Inclusion.
  - Could perhaps be used to endorse and affirm the approach that the Life on the Edge project is taking, for example connecting with hard to reach communities.
- iv. NE national teams will use the tool to look at performance across the whole of the country. The challenge is to think about how to bring this into the real world and to an area team and a more local level: an area team; local team; ultimately an individual AONB.
- v. Context:
  - Strategic: Informs strategic decision making for landscape planning. The scale for data analysis is hexagons at 5km<sup>2</sup>.
  - Data-led: Evidence based maps using current known and accessible sources of data collated through stakeholder engagement.
  - Pragmatic: A starting point for further, more detailed analysis.
  - Snapshot in time: Based on existing data sets and map based information uncovered during the project timescale (January – June 2022).
  - The tool does not:
    - Override existing designations
    - Indicate definitive areas of high landscape value and should not be used as a shortcut in Landscape and Visual Impact Assessment
    - Give detailed boundaries

### 6c.2 Observations and in discussion

- i. NB: Has seascape information has been included in the All England Assessment?  
BH: Unsure if there is seascape data included, will investigate and feedback.

---

<sup>15</sup> <https://all-england-strategic-landscapes-mapping-hub-luc.hub.arcgis.com/>

*Post meeting update:*

- *Data sets used, relevant to the coast, were Heritage Coast, and Land with Sea Views. These data sets are incorporated to give data on scenic quality, distinctive sense of place, and ‘appeal to the senses’. Investigating the maps post meeting, you can see the coastal outline faintly under the maps and there is a hexagon rendered for all portions of the coastline even when there is only a very small amount of land. So there could well be a bias against those coastal sections where there is a very small proportion of land, and they could be under-valued, so caution must be taken especially when viewing the coastal fringe.*
- *There is a user guide that also shows the layers and how they have been included: [User Guide | All England Strategic Landscape Mapping Tool \(arcgis.com\)](#).*

**7A PARTNER CONFERENCE – WEDNESDAY 25TH JANUARY 2023**

The Partners Conference is a formal event aiming to bring partners together on an annual basis.

**7a.1 Main points**

- i. The AONB Manager requests partners contact him if wishing to make a short presentation on their activity in support of Conserving and Enhancing the South Devon AONB.

**ACTION 3 (ALL): NOTIFY THE AONB MANAGER IF YOU WISH TO MAKE A SHORT PRESENTATION AT THE 2023 PARTNER CONFERENCE**

- ii. The event will celebrate activity everyone is undertaking to date and take a look at the priorities that lie ahead.

**ACTION 4 (ALL): INFORM DIANE LETHBRIDGE, AONB COMMUNICATIONS OFFICER OR JOWAN ALBON, AONB COMMUNICATIONS INTERN, OF ACTIVITIES YOU ARE UNDERTAKING OR PLANNED TO UNDERTAKE**

**7a.2 Observations and in discussion**

- i. BM: Health and Wellbeing agenda – we should take the opportunity to look at the natural environment, engagement with communities and people, and how to prioritise partner relationships.

AONB Manager: work Devon LNP has been doing through the Naturally Healthy<sup>16</sup> campaign has moved this area of activity on substantively and it is worth speaking separately to ensure the SWCPA is engaged.

PC: Consider including this in the conference.

**ACTION 5 (RE): CONTACT BOB MARKS TO DISCUSS DEVON LNP NATURALLY HEALTHY CAMPAIGN**

**8 PARTNER UPDATES**

An opportunity for Partners to update Partnership Committee on their projects contributing to conserving and enhancing the South Devon AONB and work towards AONB Management Plan priorities.

**8.1 Cllr Anne Brooks and Tracy Brooks, Torbay Council**


---

<sup>16</sup> <https://www.devonlnp.org.uk/get-involved/naturally-healthy/>

- i. Consultation period for the update to the Torbay Local Plan<sup>17</sup> has been extended to 5<sup>th</sup> December 2022.
- ii. Playing Pitch Strategy out for consultation<sup>18</sup> until 5<sup>th</sup> January 2023.
- iii. Have your say on how Torbay can work with developers to get the best for future housing developments<sup>19</sup> consultation until 5<sup>th</sup> December 2022.
- iv. This coming week is National Tree Week. A number of activities are planned in Torbay including tree planting and tree swaps.

8.2 Penny Mills, representative for amenity groups

- i. Where are we with Planning Support for South Devon AONB?  
AONB Manager: We do need cover urgently and we are now nearing the point where we can go out to advert. It is a challenging recruitment environment with colleagues struggling to recruit specialists in this field. Planning consultant cover finished in July and we have struggled to find further interim consultant cover, hence AONB capacity for planning caseload is very limited as a consequence.

8.3 Ed Parr Ferris, representative for environmental organisations (NGOs)

- i. South Coast Bottlenose Dolphin Consortium: we have known about a coastal population of bottlenose dolphins in the South West for a few years. There is more work going on now, extending around the south coast to Kent. We are keen to get Devon involvement, which is currently a gap, getting volunteers looking out for these and other species. This will coincide with getting a Marine Officer in post fairly soon.
- ii. Currently recruiting a pine marten Project Officer
- iii. Attended a Plymouth and South Devon National Marine Park marine nature recovery workshop this week. Good to see that nature recovery is now being included in this but it is still a very small component, and we will continue to encourage this to be a much larger and more ambitious part of the NMP.

8.4 Richard Snow, National Trust

- i. Woodland and tree planting aspirations at Wembury are moving forward. Recently submitted an EIA for woodland and tree planting: total of around 84Ha new woodland and wood pasture in partnership with Plymouth and South Devon Community Forest which is now the largest community forest in the country. Should the EIA be successful, planting begins with around 17Ha new woodland, equating to approximately 35,000 trees, from January onwards.

8.5 Graham Swiss, South Hams District Council

- i. The LPAs are reaching the stage of publishing Annual Monitoring Reports. One of the key issues is housing supply and although figures have not had final approval, the expectation is that a five year supply of housing land can be demonstrated.
- ii. No definitive timetable for the review of the Joint Local Plan to date as clarification is awaited from Government re the levelling up agenda and planning reforms.
- iii. Torbay Local Plan review focussing on housing: SHDC will be making representation on that and will flag the sensitivity, in particular on the western fringe of Paignton and Brixham, due to proximity to the AONB.

---

<sup>17</sup> <https://yoursay.torbay.gov.uk/local-plan-update>

<sup>18</sup> <https://yoursay.torbay.gov.uk/torbay-playing-pitch-strategy-have-your-say>

<sup>19</sup> <https://yoursay.torbay.gov.uk/have-your-say-on-how-torbay-can-work-with-developers-to-get-the-best-for-future-housing-developments>

8.6 Cllr Bernard Taylor, South Hams District Council

- i. With the declared housing emergency, looking at work with the new JLP due in 2024 – building controls and what can be done with that. Mini housing scheme has been delivered – 7 rentable units in St Ann’s Chapel.
- ii. Visited some of the FiPL sites in the capacity of being on the FiPL Local Assessment Panel. It was very interesting to see the types of projects that have been completed and enhancement of the AONB.

8.7 Liz Hitchins, representative for parish councils

- i. Dementia friendly parishes are very pleased to be involved with the Life on the Edge project.

8.8 Peter Sandover, representative for community and voluntary groups

- i. Thanks to Roger and Nigel Mortimer for attending the briefing at NCI Prawle Point in October and for the interesting presentation on what the AONB does and where there are opportunities to work together. NCI Prawle Point has small visitor centre and there is an opportunity to use this for exhibitions, for example the Life on the Edge project. Happy to help facilitate any temporary or permanent exhibitions there.
- ii. Neighbourhood Plans are progressing – two counts for the referendums for Dartmouth and Kingsbridge/West Alvington/Churchstow are taking place as we speak.

8.9 Eamon Crowe, Natural England

- i. Personnel changes

New members of the Devon, Cornwall and Isles of Scilly team for strategic matters:

- Becky Hughes: Support on landscape matters and also FiPL Local Assessment Panel attendance
- Becky Aston: Species Recovery Officer
- Cathy Fitzroy: Devon Local Nature Recovery Strategy
- Martin Longley: Tree Action Plan Delivery Officer

Local team:

- Jasmine Pearson: Catchment Sensitive Farming Officer
- Louise Riley is on maternity leave until July 2023.

There are also new members of the Marine team.

- ii. Will arrange time with Simon Tame and Phil Stocks to engage with the Life on the Edge project.
- iii. Countryside Stewardship ongoing for another year.

8.10 Peter Chamberlain, Devon County Council

- i. Tree related initiatives:

- Devon tree and woodland strategy: work has commenced on production of the new strategy. Engagement with stakeholders will commence in January with a view to producing the strategy by Spring
- Devon was successful in a bid to the national woodland accelerator fund that provides funding for local authorities to employ staff to help promote woodland planting initiatives. There will be three new members of staff in the coming months, one in Plymouth and South Devon Community Forest and two in DCC.
- Emergency Tree Fund, led by the County and funded by the Woodland Trust, has had good activity.

8.11 Emma Magee, Environment Agency

- i. New in the area. Initially looking to identify projects, develop more capacity in terms of project delivery and look for external sources of funding.
- ii. There is a saltmarsh project under development. Hoping to target several areas within the Dart with a view to expand to other estuaries should the model prove effective. Strong community ownership element for those projects.
- iii. Developing a project to support the AONB in terms of woodland provisioning. There is a great deal already taking place; what we are hoping to support through the Catchment Partnership is a proactive vision from the AONB perspective, to guide applications through a joined up approach.
- iv. Applying for national EA funding with a coastal and estuary focus in the AONB.
- v. Bathing waters: a couple of reports produced under statutory requirement by South West Water, of which Bantham is covered by one. These reports investigate the ability of bathing water to achieve excellent status in future years reporting threats to that status. The reports will be used as a basis for identifying opportunities for action where there are threats to water quality outside of SWWs remit.
- vi. Dart and Tavy bathing water pilot: Led by SWW with input from many parties. EA is a steering group member and has been contracted to place monitoring equipment in the Dart. The aspiration is to make the data publicly available.

8.12 Natasha Bradshaw, representative for coast and marine

- i. Would have been a good opportunity to present at the Partner Conference however the date clashes with the national Coastal Futures conference taking place in London.
- ii. Working on a vision for National Marine Parks that ties in with a number of initiatives including landscape recovery work and recent NE work. A working group was set-up this year that includes Sarah Manning from NE and John Watkins from NAAONB as members.
- iii. Emerging project for a National Coastal Data Hub.
- iv. Involved with South West Marine Ecosystems that looks at marine mammal citizen science data and also involved with Devon and Severn IFCA.

8.13 Emily Browne, Plymouth City Council (from Chat box)

- i. Exciting to see the Life on the Edge project developments and the AONB's approach to nature recovery.

8.14 Roger English, South Devon AONB

- i. The AONB Manager used this agenda item to provide a brief update from the Core Funding Group meeting held on 30<sup>th</sup> September 2022.  
Main points included
  - Key focuses: in year spend, project funding including LotE and FiPL as well as the additional funding from Defra with an associated short timeframe related to 'Access For All'. Funding for these three projects equates to £850k in 2022/23.
  - Projects and associated risks are looked at in detail in the meetings.
  - The impacts on AONB budgets of the National Joint Councils Local Government Pay Award, and examining measures to accommodate the additional £11.5k burden was considered in detail. Following this, now heading for a balanced budget in 2022/23 however the situation becomes increasingly challenging in 2023/24 and beyond. A series of conversations about the nature of public sector funding for the future are taking place.

**PARTNERSHIP MEETING DATES IN 2023**

- Friday 10 March, Repton Room Follaton House and online via Zoom
- Friday 23 June, venue tba (Repton Room Follaton House as fallback) and online via Zoom
- Friday 24 November, Repton Room Follaton House and online via Zoom

These minutes remain as draft until approved at the next meeting of the South Devon AONB Partnership Committee.

Item Ends.



## ITEM 5 South Devon AONB Management

### 5A. UK Shared Prosperity Fund: South Hams DC Investment Plan and England Rural Prosperity Fund

ITEM FOR	CONSIDERATION	REPORT BY	Roger English, AONB Manager
<b>SUMMARY</b>	This report introduces the UK Shared Prosperity Fund Investment Plan for the South Hams District Council area.		
<b>AONB MANAGEMENT PLAN THEMES</b>	<p><b>ALL PLACE:</b> Natural resources &amp; climate; Farming and land management; Coast &amp; marine; Rivers &amp; estuaries.</p> <p><b>ALL PEOPLE:</b> Tourism, access &amp; recreation; Rural economy &amp; services.</p> <p><b>Others</b> – underpins and links to all other Management Plan themes.</p>		
<b>RECOMMENDATION</b>	<p>Partnership members are recommended to:</p> <ul style="list-style-type: none"> <li>i. Congratulate South Hams District Council on securing Shared Prosperity Funding</li> <li>ii. Consider links to AONB Management Plan priorities</li> <li>iii. Support the Council in achieving successful delivery and bringing benefits from the investment to conserve and enhance the natural beauty of the South Devon AONB</li> </ul>		

### Background

The UK Shared Prosperity Fund<sup>20</sup> is a central pillar of the UK government's Levelling Up agenda and a significant component of its support for places across the UK. It provides £2.6 billion of new funding for local investment by March 2025, with all areas of the UK receiving an allocation from the Fund via a funding formula rather than a competition. It has been created to help places right across the country deliver enhanced outcomes and recognises that even the most affluent parts of the UK contain pockets of deprivation and need support.

### South Hams District Investment Plan<sup>21</sup>

In August 2022, South Hams District Council submitted investment proposals for the UK Shared Prosperity Fund to the Government's Levelling-Up Department.

The investment plan sets out the work that was undertaken to develop a suite of activities. It identifies a range of local needs, the commonality between the Government's objectives and the Council's own local objectives, and demonstrates how their proposals will meet these needs. It also recognises the local governance mechanisms that will be used to oversee the delivery of the programme, ensuring that the projects which the Council and its strategic partners will deliver over the next couple of years will have as significant a positive impact on local businesses and communities as possible.

1. The 4 themes set out in the investment plan are:

<sup>20</sup> <https://www.gov.uk/government/publications/uk-shared-prosperity-fund-prospectus/uk-shared-prosperity-fund-prospectus>

<sup>21</sup> <https://www.southhams.gov.uk/article/9464/UK-Shared-Prosperity-Fund>

- Active and Inclusive Travel
- Agri-tech and Regenerative Farming
- Marine Economy and Decarbonisation
- Wider Business Support and Consultancy

The overarching theme for the programme is to support Clean Economic Growth

2. The submission to Government was completed through an online portal and a copy of the investment plan can be found at [https://www.southhams.gov.uk/media/7210/UK-Shared-Prosperity-Fund-Investment-Plans-South-Hams/pdf/UKSPF\\_Investment\\_Plan\\_-\\_South\\_Hams\\_.pdf?m=638108614759700000](https://www.southhams.gov.uk/media/7210/UK-Shared-Prosperity-Fund-Investment-Plans-South-Hams/pdf/UKSPF_Investment_Plan_-_South_Hams_.pdf?m=638108614759700000)

The programme was approved by Government in December 2022 and wider programme delivery will begin from April 2023. Partnership boards (advisory boards) are being established for each of the project themes.

### **Links to South Devon AONB priorities**

Though having a District wide focus, the investment themes and the work programmes within them all deliver on South Devon AONB Management Plan priorities, supporting in particular:

- Farming in Protected Landscapes
- Climate action and reaching net zero
- Nature recovery
- Landscape recovery
- Health and wellbeing, sustainable transport.

### **Further information**

Chris Shears, Head of Place and Enterprise for South Hams & West Devon Councils, will be attending the AONB Partnership meeting to provide further insight on the UKSPF investment plan workstreams and to explore links and complementarity with the AONB Partnership and work of our wider partners.

Item Ends.

## 5B. Farming in Protected Landscapes

ITEM FOR	FEEDBACK	REPORT BY	Henry Lucas, AONB Farming in Protected Landscapes Officer
<b>SUMMARY</b>	This report summarises the Farming in Protected Landscapes Programme as so far implemented in South Devon AONB. It reports on programme changes, the appointment of the Local Assessment Panel, staffing appointments within the AONB Unit to deliver the programme, the projects funded in 2021/22 and the programme of funding for year two, 2022/23 And, finally Defra feedback on year one of the programme		
<b>AONB MANAGEMENT PLAN THEMES</b>	<p><b>ALL PLACE:</b> Natural resources &amp; climate; Biodiversity &amp; geodiversity; Farming and land management; Historic Environment &amp; Local Distinctiveness; Coast &amp; marine; Rivers &amp; estuaries; Landscape Character.</p> <p><b>ALL PEOPLE:</b> Tourism, access &amp; recreation; Planning &amp; sustainable development; Transport &amp; highways; Rural economy &amp; services; Community &amp; culture.</p> <p><b>ALL PARTNERSHIP:</b> Awareness &amp; communication; Management, organisation &amp; partnerships.</p>		
<b>RECOMMENDATION</b>	<p>AONB Partnership Committee members are invited to:</p> <ol style="list-style-type: none"> <li>Note the scope of the opportunity for the South Devon AONB, its farmers and land managers;</li> <li>Advocate for the programme in discussions with the area's farmers and landowners to drive high quality, innovative and well developed proposals</li> </ol>		

## Background

- The Farming in Protected Landscapes (FiPL) programme was created by Defra with advice and support from AONBs and National Parks and it forms part of the Government's Agricultural Transition Plan. The programme provides funds to allow farmers and land managers to work with Areas of Outstanding Natural Beauty teams and National Park Authorities in order act on management plan priorities. The programme was initially set to run over three financial years from mid-2021 to the 31st of March 2024. However, as announced in the government's Environmental Improvement Plan, the FiPL programme has since been extended to the 31st of March 2025, due to a positive reception by land managers and government policy makers.
- The programme will fund projects that:
  - Support nature recovery;
  - Mitigate the impacts of climate change;
  - Provide opportunities for people to discover, enjoy and understand the landscape and its cultural heritage;
  - Protect or improve the quality and character of the landscape or place.

Further information can be found on the South Devon AONB website<sup>22</sup>

<sup>22</sup> <https://www.southdevonaonb.org.uk/opportunities-for-farmers-2021-24/>

## Programme changes since March 2022

3. During 2022/23, the second year of FiPL there has been a series of updates and proposals by Defra, particularly during the last quarter. These include:
  - An invitation to obtain additional funds from a “National Pot” for the current financial year, due to FiPL underspend nationally.
  - A significant increase in the Countryside Stewardship (CS) capital and revenue payment rates. Some rates doubling, in order to match agricultural inflation.
  - Consequently all year 3 projects had to be updated to the new CS rates, in addition to year 2 projects requesting an update for uncompleted items. This led to a second request for national FiPL funds for overspend – which was guaranteed to be funded by FFCP (Future Farming and Countryside Programme).
  - FiPL has been extended by a year to finish the 31st of March 2025. Defra requested all national parks and AONBs to submit a bid for additional funds for Year 3 and Year 4, success dependent on the AONBs previous ability to allocate the budget. Nationally there is an additional £10m to allocate per year for Year 3 and Year 4. We requested an additional £250,000 and £300,000 to support project delivery, in addition to the Admin, Advice & Guidance budget required.

## Local Assessment Panel

4. A Defra requirement of the programme was the setting up a Local Assessment Panel following guidelines provided and including strong farmer representation from the area. The LAP receive applications that request over £5,000, and decide whether to approve/decline the application. The South Devon Panel has met in person five times over the last 12 months in order to make decisions on project applications. A workshop to review FiPL progress, and reconsider priorities for future meetings is being scheduled for the start of the new financial year. –
5. The panel comprises 11 representatives:
  - John Yeoman (Panel Chair) – LAG Chair and former Farmer
  - Charles Wreford-Brown - AONB Partnership representative for landowning and farming community, Rural Surveyor.
  - Matt Darke – Farmer, Devon Young Farmer Clubs Rep
  - Becky Hughes (replaces Eamon Crowe) – Natural England
  - Jon Andrews – Farmer and Nature Friendly Farming Network
  - Kerri Watson (replaces Cath Jeffs) – RSPB and Environmental NGOs representative
  - David Camp – Farmer
  - Bernard Taylor - AONB Partnership, former Farmer and South Hams District Councillor
  - Vicci Camp – Farmer
  - Richard Foss – Farmer and South Hams District Councillor
  - Roger English – AONB Manager
6. Level of investment in each of the four FiPL outcomes [split based on the main outcomes hit was a subjective exercise]:

Funds committed over three years:

- Climate 11.2%
- Nature 41.4%
- People 8.8%
- Place 38.6%

Place outcome split:

- Historic and landscape character 24%
- Farm business resilience 76%
- Approximately  $\frac{2}{3}$  of "farm business resilience" was committed in the first year.

**Staffing**

7. The FiPL Officer and FiPL Administrator roles which are staffed by Henry Lucas, and Phoebe Rhead respectively, have both successfully been in post for just under a year – both started in March 2022. Their work continues and progresses the excellent work undertaken by the interim team created in year 1 consisting of an interim FiPL officer Julia Bastone of 5 Farming, and the administrative support of AONB Communications Officer Diane Lethbridge and Louise Lethbridge.
8. Initial contracts for the FiPL roles were to be until the 31st of March 2024, but in light of the confirmed extension, the roles will likely be extended to match; finishing on the 31st of March 2025.

**2022/23 projects**

9. In total there have been 125 FiPL enquiries from landowners to date.
10. Over the last 12 months, 18 applications have been approved for Year 2, successfully allocating the full revised budget for Year 2. 12 of the applications were over £5,000 and decided through the LAP; the other 6 were under £5,000 and approved by the AONB manager.
11. Due to successfully committing the original year 2 allocation of £229,361; we have been successful in two further bids for additional funds for year 2. An extra £10,903.11 from the National Pot for three under £5k projects which were submitted into a competitive round. In addition the FFCP agreed to cover the uplift in CS rates on applicants from the 1st of January 2023 which amounted to overspend of £18,237.78 for year 2.

**Table 1 - Allocated and requested programme budgets for remaining programme years**

Year	Administration	Advice & Guidance	Project Delivery	Total
2022/23	£26,895.00 max	£45,722.00 max	£267,501.89	£340,118.89
			(Including £10,903.11 National Pot & £27,237.78 increase to CS rates)	
2023/24	£26,895.00 max	£45,722.00 max	£159,825.00	£232,442.00  (£482,442.00)*
			(Requested an additional £250,000.00)*	
2024/25*	£26,895.00 max (Requested)*	£45,722.00 max (Requested)*	£300,000.00 (Requested)*	£372,617.00*

**Table 2 - Breakdown of FiPL 2022/23 programme variations**

FiPL element	Working Budget	Yr 2 Spend to Date (as at 15/2/23)	Jan 23 Projected Increased costs	Revised working budget (1)	Expected year end position
Administration	£26,895.00	£23,841.64	£1610.00	£26,895	£26,895
Advice & Guidance	£45,722.00	£33,248.99	£1356.00	£45,722	£45,722
Project Delivery Yr2	£229,361	£35,877	+£10,903.11 3x National Pot <£5k projects  +£27,237.78 Countryside Stewardship payment rates	£267,501.89	£267,501.89
<b>Total</b>	<b>£301,978</b>	<b>£92,967.63</b>	<b>£38,140.89</b>	<b>£340,118.89</b>	<b>£340,118.89</b>

**2023/24 projects**

12. The entirety of the Year 3 budget of £159,825 has already been allocated for year 3. The uplift in CS rates required us to commit an additional £35,890.58 to live applications and has created an overcommitment of £1,844.44 reported to Defra. Additional costs will be met by the Future farming Countryside Programme.
13. During the last 12 months, 5 applications have been approved solely for Year 3. However an additional 7 applications from year 1 and year 2 are multiyear projects.

**Year 2 and 3 committed funding facts:**

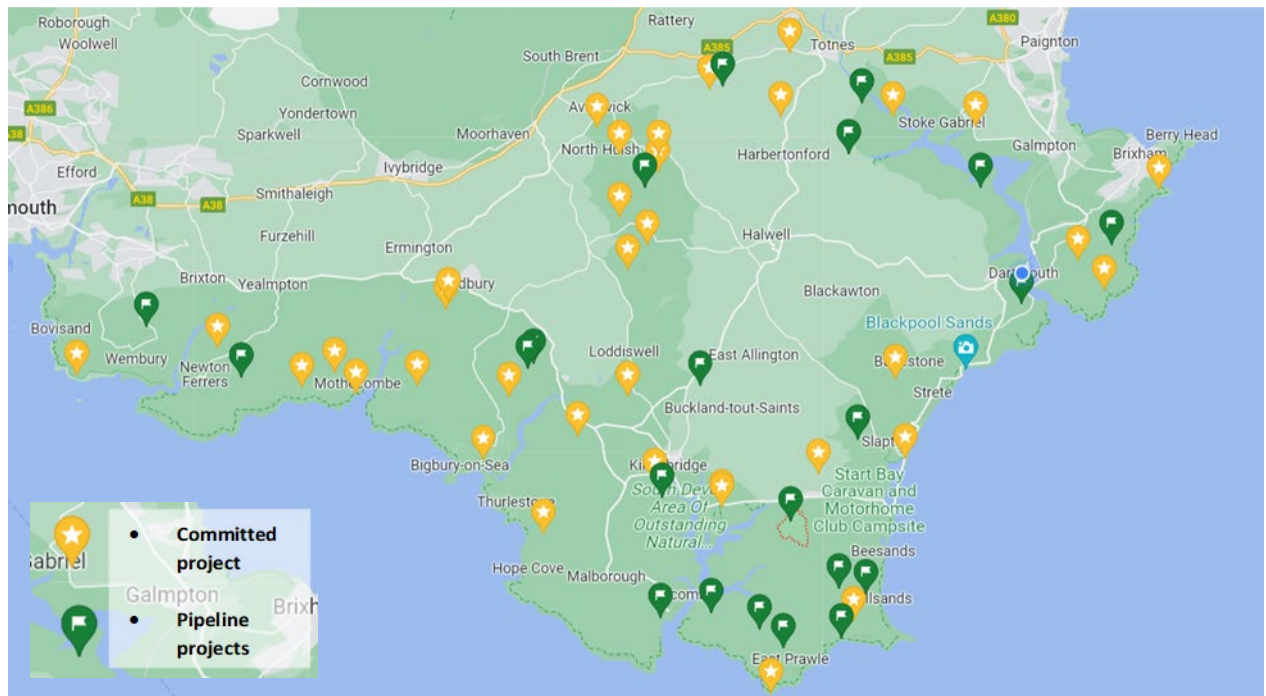
- Funded 46 x 'ED1's Educational Visits' such as Open Farm Sundays, Farm walks and open days, helping new audiences access the countryside and enjoy the AONB.
- Funded the planting of 187 fruit trees; 532 parkland/hedge trees; 3928m of hedge planting.
- 330m of hedge scheduled to be laid.
- Created 42 ponds.
- 1 "calf to cup" milk vending machine installed; with 2 other "farm to fork" enterprises also funded.
- Brush seed harvester purchased.
- Tidal sea flap to be installed at West Charleton to reinstate the previous habitat.
- Regenerative grazing infrastructure has been implemented on 11 farms.
- 3 pop up campsites have received infrastructure support.

**Summary of the three years of project commitments**

14. Over the three years we have committed to 39 separate projects, awarding an average grant contribution of £16,861.79 per application. The total amount of FiPL funding we have committed for the 3 years totals £646,597.50. The total cost of the FiPL projects committed totals £991,937.82.

A gearing ratio of 1:1.53

15. Much of the funding for year 1 and 2 was allocated on the historic CS rates, which have since doubled. Many applicants didn't announce the suspected additional cost of carrying out CS works, so the total cost benefit of projects is therefore likely to be higher.
16. The locations of the projects completed and committed through FiPL for the three years are broadly spread throughout the South Devon AONB and show reasonable coverage for the first two years of activity. Currently there is a lower take up in the Kingsbridge area, but as the Pipeline map shows, there is promising potential here.



## Programme funding for South Devon AONB

17. A revised budget for Year 3 of the FiPL programme is yet to be signed off by the programme board and government ministers. There are some final administrative procedures that the Future Farming and Countryside Programme (the team that holds the funding) need to work through and confirmation of individual allocations for 23/24 should take place in the coming days. Defra are also exploring whether they can confirm our 24/25 allocations at the same time.

Item Ends.



## 5C. Environmental Land Management Schemes

ITEM FOR	CONSIDERATION & FEEDBACK	REPORT BY	Roger English AONB Manager
<b>SUMMARY</b>	This report introduces the recently published policy paper on Environmental Land Management Schemes and highlights the opportunity for South Devon AONB protected sites, habitats and carbon stores provided by the 2 <sup>nd</sup> round of Landscape due to open for applications in Spring 2023		
<b>AONB MANAGEMENT PLAN THEMES</b>	<p><b>PLACE:</b> Natural resources &amp; climate; Biodiversity &amp; geodiversity; Farming and land management; Historic Environment &amp; Local Distinctiveness; Coast &amp; marine; Landscape Character.</p> <p><b>PEOPLE:</b> Tourism, access &amp; recreation; Planning &amp; sustainable development; Rural economy &amp; services; Community &amp; culture.</p> <p><b>PARTNERSHIP:</b> Management, organisation &amp; partnerships.</p>		
<b>RECOMMENDATION</b>	<p>Partnership members are recommended to:</p> <ol style="list-style-type: none"> <li>Consider the substantial opportunity for South Devon AONB coastal habitats presented by the second round of ELM Landscape Recovery</li> <li>Feedback on priorities, opportunities and potential partners</li> </ol>		

### Background

1. 'Environmental Land Management update: how government will pay for land-based environment and climate goods and services'<sup>23</sup> was published in January 2023. This policy paper sets out how government will pay farmers and land managers to protect and improve the environment alongside food production, and how Environmental Land Management schemes will be delivered.

### Environmental Land Management Schemes

As we advance further into the agricultural transition period with direct payments gradually falling, the government is increasing the funding and roll out of the Environmental Land Management schemes:

- Sustainable Farming Incentive (SFI)
- Countryside Stewardship and Countryside Stewardship Plus
- Landscape Recovery

The latter is of particular note providing support and funding through four stages of Application – Enrolment – Development – Implementation.

2. Identifying and securing green investment and blended finance are critical components to the long term approach contained within the Landscape Recovery programme

---

23

[https://assets.publishing.service.gov.uk/government/uploads/system/uploads/attachment\\_data/file/1136855/Environmental-Land-Management-Update-January-2023-Accessible-Final.pdf](https://assets.publishing.service.gov.uk/government/uploads/system/uploads/attachment_data/file/1136855/Environmental-Land-Management-Update-January-2023-Accessible-Final.pdf)

## **Landscape Recovery**

3. Landscape Recovery funds a smaller number of longer-term, larger-scale, bespoke projects to enhance the natural environment and deliver significant benefits.
4. In summer 2022, Defra announced 22 projects chosen for the first round of the scheme. These projects represent hundreds of farmers and landowners working together. The majority involve groups of land managers and farmers, including tenants, working together to deliver a range of environmental benefits across farmland and rural landscapes.
5. The first round of projects were focused on boosting biodiversity, improving water quality, reducing flood risk and helping reach net zero.
6. A second window for applications will open in spring this year and a further round in 2024. This second round will focus on net zero, protected sites and habitat creation.
7. Defra anticipate accepting up to 25 projects of between 500 to 5000 hectares, depending on the quality of the applications.
8. Information for potential applicants has been provided over the last few weeks through a series of webinars. Detailed guidance documentation is expected shortly prior to a 16 week application window opening.

## **Applicability to South Devon AONB**

9. While the first round was poorly suited to coastal lowland landscapes and South Devon AONB priorities, the second round focus themes are far more relevant.
10. Developmental work undertaken through a combination of: AONB Nature recovery Plan; Farming in Protected Landscapes; Countryside Stewardship Facilitation; Life on the Edge Devon Special Species NLHF expression of interest, phase 1 bid preparation and development phase work; coupled with information and learning from a variety of partners with coastal habitats and mixed farming interests, all suggests that now is the right opportunity for a collaborative coastal South Devon AONB focused Landscape Recovery project.
11. Protected sites, their farmers and land managers along the South Devon coastline could benefit from Landscape Recovery support to assist reaching and sustaining favourable condition.
12. Views of the AONB partnership are sought on priorities and areas of focus given the second round requirements for net zero, protected sites and habitat enhancement.

Item Ends.

## 5D. Access for All funding to protected landscapes

ITEM FOR	INFORMATION and FEEDBACK	REPORT BY	Adam Davison, AONB Project Officer
<b>SUMMARY</b>	This report introduces AONB work undertaken in the last quarter of 2022/23 supported by Defra Access for All 'Removing Barriers' funding, provided as part of a national capital programme for delivery in England's protected landscapes.		
<b>AONB MANAGEMENT PLAN THEMES</b>	<p><b>PEOPLE:</b> Tourism, access &amp; recreation; Planning &amp; sustainable development; Transport &amp; highways; Rural economy &amp; services; Community &amp; culture.</p> <p><b>ALL PARTNERSHIP:</b> Awareness &amp; communication; Management, organisation &amp; partnerships.</p> <p><b>Others</b> – underpins and links to all other Management Plan themes.</p>		
<b>RECOMMENDATION</b>	<p>Partnership members are recommended to:</p> <ol style="list-style-type: none"> <li>Note 2022/23 project activity achieved at short notice within a tight timeframe;</li> <li>Provide feedback on potential 2024/25 project activity.</li> </ol>		

### Background

1. In August 2022 Defra introduced the potential for a new focused grant uplift to core funding for AONBs, the '*Access for All: Removing barriers to access in protected landscapes*' grant funding opportunity. Contract documentation was issued on 8<sup>th</sup> November 2022 and news of the grant embargoed until January 2023 when the Environmental Improvement Plan was published.
2. Access for All funding is capita funding for physical and digital infrastructure improvements to make protected landscapes more accessible for people of all ages and abilities and from all socio-economic backgrounds, to make them what Glover called, 'places for everyone'.
3. The additional allocation was calculated by applying a funding formula based on total area, total population within the protected landscape, total population within a 25km radius of the landscape and the Multiple Deprivation Index.
4. £59,856 of funding was made available for 2022/23 and a further £62,931 for 2024/25. No funding is available for this programme in 2023/24.
5. The staff unit has worked swiftly with partners to conceive, agree, develop and deliver projects to the full total value of £59,856 allocated funding, all to be completed before the end of March 2023.

### Funding parameters

6. The South Devon AONB grant allocation is to be spent in Year 1 and Year 3 on capital works following Defra spend guidelines:
  - The grant fund does not require match funding.
  - Year one funding must be spent in year 1 with any underspend to be returned.
  - Activity must take place by 31 March 2023 but can be invoiced after this date.

- Spending will report will be reported on as part of the end of year review.
- Evidence of spend may be required based on randomly selected spot checks.
- Report against outcomes include: Metres of accessible path, Number of disabled toilets and rest stops, accessible gates and gaps, visits facilitated by new equipment and the number of volunteer days facilitated by new equipment.
- Number of accessible or easy access routes for which wayfinding (physical or digital) has been created or improved.

### **Agreed projects currently being undertaken**

#### **A. Coleton / Scabbacombe all access path improvements**

- Review and assess improvement works with Dartmoor Disabled Ramblers.
- Improve regularly flooded path from Coleton camp heading east along track to Scabbacombe Head view point with additional view points.
- Include access gates, accessible countryside furniture (seat/picnic benches, digital provision and mapping).

#### **B. Wembury beach, Wembury Point SWCP**

- Working with the South West Coast Path Association, Devon County Council and National Trust.
- Upgrading the pathway through Lower Mill meadow by creating 265m of accessible path for wheelchair users.
- Upgrading path up to 1.5m width from small footbridge.
- Berry Head National Nature Reserve and Gillard Road Nature reserve access route.
- Scrape vegetated areas of pathway for surface improvements and dispose of arisings. To resurface affected areas to allow for improved access for disabled and improve drainage from path surface to prevent further erosion. Install fully accessible gates.

#### **C. South Milton Sands beach access project**

- The grant fund will contribute to the wider onsite project by purchasing timber and materials for South Milton boardwalk.

#### **D. Americas Lane access works, Churston**

- Financial contribution to Torbay Council towards ramp that replaces steps at Grove Wood to be delivered by SWISCO.

#### **E. Access audit**

- A full access audit on our National Lottery Heritage Fund supported Life on the Edge project hot spots. This will provide considerable support as the Delivery Phase NLHF bid is due to be submitted in August 2023.

- Audience profiling. Work commissioned through the Audience Agency has further helped provide intelligence on people in Torbay, Plymouth and South Hams.

#### F. Website accessibility

- A local disability group has been approached to conduct a review and provide suggestions to make improvements.
- The funding has also provided for the purchase of a website accessibility tool called Recite Me. The tool provides an assistive toolbar allowing website visitors to customise their experience and the website content to suit their individual needs as well as providing a screen reader and translation.

### **Year 3 projects (2024/25)**

Year 3 projects are currently undefined. These must follow the same eligibility criteria and spend guidelines as for 2022/23 funding.

The following examples have been given to assist in developing projects:

- Disabled toilet facilities
- Replacement of gates
- Additional seating areas
- Improved access to waterways for the mobility-impaired
- Widening and resurfacing of paths for multi-user use
- Purchase of trampers, mobility scooters, electric bikes and storage/charging facilities
- Purchase of specially adapted tools and personal protective equipment for volunteers
- Provision of accessible signage and visitor information, physical and digital
- Creation of a new or improvement of an existing piece of access infrastructure, such as
- building a toilet or fitting a new accessible gate or adapting a minibus or visitor centre.
- Research and development, defined in budgeting guidance as:
- “Creative work undertaken on a systematic basis to increase the stock of knowledge, and use of this stock of knowledge for the purpose of discovering or developing new products, including improved versions or qualities of existing products, or discovering new or more efficient processes of production”.

The following type of projects are not considered eligible:

- Removal of a stile - unless it's being replaced by an accessible gate

- Hire of a minibus
- Staff time that is not directly attributable to creation of an asset

Item Ends.

## ITEM 9. For information

### 9B. Undergrounding of Overhead Power Lines

ITEM FOR	INFORMATION and FEEDBACK	REPORT BY	Adam Davison, AONB Project Officer
<b>SUMMARY</b>	This report introduces South Devon AONB project activity actioned through the South West Protected Landscapes Network Undergrounding National Grid Steering Group to remove intrusive overhead powerlines and infrastructure from the South Devon AONB landscape.		
<b>AONB MANAGEMENT PLAN THEMES</b>	<p><b>ALL PLACE:</b> Natural resources &amp; climate; Biodiversity &amp; geodiversity; Farming and land management; Historic Environment &amp; Local Distinctiveness; Coast &amp; marine; Rivers &amp; estuaries; Landscape Character.</p> <p><b>PEOPLE:</b> Tourism, access &amp; recreation; Rural economy &amp; services.</p> <p><b>PARTNERSHIP:</b> Awareness &amp; communication</p>		
<b>RECOMMENDATION</b>	<p>Partnership members are recommended to:</p> <ol style="list-style-type: none"> <li>i. Provide feedback to the AONB Projects Officer on potential power line locations for consideration of future works.</li> </ol>		

### Background

1. Electricity supplies in rural areas are predominantly provided using overhead lines and this means that overhead lines are installed within National Parks and AONBs, sometimes near important sites. Many overhead lines have been in place for a long time, but there are locations, especially at popular remote tourist sites, where the removal of selective overhead lines can enhance the visual amenity and enhance landscape character.
2. As part of an Ofgem approved voluntary initiative, the Western Power Distribution (WPD now National Grid) approved business plan (ED1) for the regulatory period 2015-2023 includes a total sum of £7.7m for undergrounding of overhead lines in National Parks (NPs) and Areas of Outstanding Natural Beauty (AONBs) for each of its four licence areas.
3. The geographic area for funding includes numerous National Parks and Area of Outstanding Natural Beauty (AONBs). These include the Isles of Scilly and Dartmoor in the South West, Pembrokeshire and Gower in Wales, the Cotswolds in the West Midlands and the Peak District and Lincolnshire Wolds in the East Midlands.
4. The scheme fully funds the undergrounding process in line with guidelines overseen by a regional steering group. Now towards the end of the programme, it has committed most of the funding for the South West region.
5. A new ED2 programme includes £5M over 5 years and the confirmation and agreement of details will be covered in the March 2023 SW Protected Landscapes meeting.

6. National Grid works collaboratively with representatives of AONBs and National Parks to identify areas that would most benefit from the undergrounding of overhead powerlines.

### South Devon AONB

7. The South Devon AONB staff unit secured £100,000 funding for its first undergrounding project, resulting in National Grid removing 7 poles and undergrounding 1.8km of 11kW wirescape at Prawle Point. Works were completed in October 2022. Further schemes are being developed for prioritised locations elsewhere in the AONB involving close work with landowners including the National Trust to deliver successful projects.





**Undergrounding line selection process**

- A. The South West Protected Landscapes Network Undergrounding National Grid Steering Group calls for candidate line submissions from AONBs/NPs using the National Grid Assessment Form.
- B. National Grid undertake an initial assessment and costing of the candidate lines and reports this to the Steering Group.
- C. On the basis of costing, equitable distribution of the National Grid Undergrounding budget and assessment of strategic landscape impacts, the Steering Group decide if a candidate line should be investigated further.
- D. Further investigation by National Grid, the AONB/NP and interested groups/landowners provides an undergrounding solution and final cost estimate. The Steering Group then makes a final recommendation on the candidate line.
- E. National Grid approves expenditure on the candidate line.
- F. Work is completed.
- G. Press and publicity is jointly developed and handled by National Grid and the AONB/NP.

**South Devon AONB proposed schemes**

- 8. To use the remaining funding allocation in the ED1 programme, the SW Protected Landscapes group are considering Phase 1 of a 2 phase project at Sharpham. The project would remove highly visually impactful poles and lines disturbing views along the River Dart towards Totnes, Registered Park and Garden, cycle route 22, and access routes in the area. A Phase 2 project would be a new departure for the programme involving removing wirescape in the setting of the AONB, as the wires cross and impact the Sharpham Natural Burial Ground.
- 9. Discussion has been initiated regarding potential future projects at Southdown Farm, National Trust South Devon Area base; National Trust land on the coast at Noss Mayo and new community woodland at New Barton, Wembury.

Extracts below from “*Undergrounding powerlines in AONBs / National Parks – A Guide*”

## Undergrounding powerlines in AONBs/National Parks - A guide

### STAGES/PROCESS

	Protected Landscape
	Western Power Distribution
	Steering Group

Prelim site selection	Protected Landscape (PL) lead to consult local amenity groups, landowners and Env. Agencies/staff (if necessary) covering PL on options for identifying possible sites for underground power lines - confirm local support in principal pending process of confirmation through WPD/SWPLSG
PL Assessment	Sites identified and prioritised/collated. PL lead to coordinate and liaise over possible sites to progress – emphasis on iconic. PL to complete using <b>ASSESSMENT FORM</b> to include all environmental constraints and provide accompanying maps and photos. WPD to carry out detailed tech assessment in support of scheme proposals.
WPD Assessment	
PL confirm locally	Present options to PL Partnership/Board to confirm approach to progress with SWPLSG. Record PL agreement and use as basis for supporting letter from PL alongside report on/record of consultation
PL Prep for SG	PL acts as lead to work up scheme and present Steering Group for consideration
Present to SG - Stg. 1	Steering Group decision on scheme – PL to develop with WPD if approved
PL develops scheme	PL to liaise with WPD and undertake detailed discussions with landowners to assess scheme and costs. PL lead to draw up <b>METHOD STATEMENT</b> in conjunction with WPD/landowners and local agencies/specialists covering designation issues etc. - to include community engagement. WPD to make assessment of EIA requirements/screening.
WPD Tech scheme develop't	
Present to SG - Stg. 2	Costed scheme to be presented back to Steering Group for approval and progression if OK
WPD Schedule & Deliver	WPD/PL undertake EIA screening. Subject to outcome, move to final cost, schedule and implementation of scheme. Any significant variations to original estimates to return to Steering Group for approval before commencing.
PR	Follow up press and PR only AFTER completed and in agreement with WPD

### STAGE 1

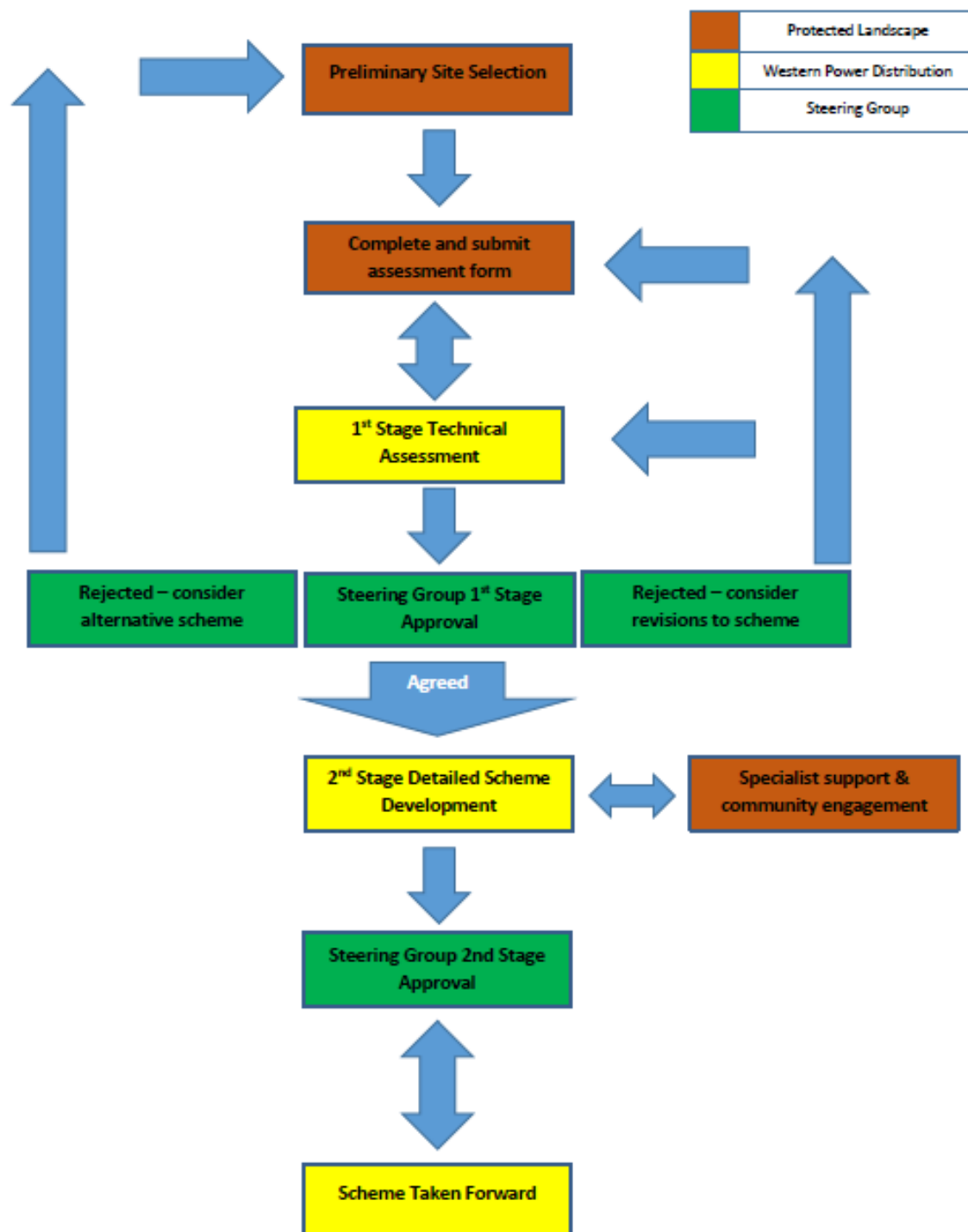
WPD will carry out initial budget costing and feasibility work on schemes put forward by the stakeholder. These will then normally be discussed by the Steering Group.

### STAGE 2

Schemes selected by the Steering Group will then be worked into detailed schemes (including costing and consents).

Once a scheme is ready to be constructed, if the costs vary significantly compared to the budget cost, it will be presented again to the Steering Group for approval.

## Undergrounding powerlines in AONBs/National Parks - A guide



Item Ends.

**Meeting dates in 2023**

- Friday 23 June, online via Zoom
- Friday 24 November, Repton Room House and online via Zoom

South Devon Area of Outstanding Natural Beauty

## **AONB Partnership Committee Meeting**

to be held at

**10:15am on Friday 10 March 2023**

### **Hybrid Meeting**

Repton Room at Follaton House and via Zoom

### **Annexes to Meeting Papers**



South Devon AONB Staff Unit, Follaton House, Totnes, TQ9 5NE  
Telephone 01803 229 330 Email [enquiries@southdevonaonb.org.uk](mailto:enquiries@southdevonaonb.org.uk)

## **Annex 1 to Agenda item 9a: Summary of Development Management and other Planning Activity** *updated 1 March 2023*

### **Purpose**

1. This report provides a brief update on Local planning authority development management consultations since the November 2022 AONB Partnership meeting pertinent to the South Devon AONB.

### **Key Activity**

#### **Planning Caseload**

2. In the year 2022/2023, up to the end of February 2023, Local Planning Authorities (LPAs) and the Marine Management Organisation (MMO) formally consulted the AONB Unit on 63 applications. In addition, the AONB Unit was consulted on nine felling/restocking licences, seven woodland creation proposals, a screening opinion and seven pre-applications.
3. There have been 35 new consultations since the last update.
4. Summary of activity since the last update:
  - 31 cases that LPAs have determined
  - 9 completed responses on cases that LPAs/MMO are yet to determine
  - 27 cases under consideration with responses currently in development
  - 1 pre- application responded to / response in development
5. Note the 6 applications with completed responses and an LPA decision as at the November PCM are treated as closed and are not reported again in the table below. Wording in 'normal' text signifies this appeared on the last planning update, with any changes/updates noted in '**bold**' text
6. The following table lists the planning cases relevant to the period:

App Ref	Application Type	Decision	In accordance with AONB advice / guidance	AONB Major	Comments
<b>31 Applications - LPA decision made</b>					
1159/21/FUL	Land at West End Garage, Salcombe 22 dwellings	<b>Conditional approval</b>	Objection	Y	Revised plans Jul 2022
P/2021/0658	Brokenbury, Churston Ferrers Formation of a solar farm & associated equipment to include installation of fencing, CCTV, landscaping & ecological mitigation.	<b>Approval</b>	No objection	N	
2817/21/ARM	Noss Marina Details of reserved matters and discharge of conditions	<b>Conditional approval</b>	Advice provided	Y	
3054/21/ARM	Noss Marina Approval of reserved matters	<b>Conditional approval</b>	Advice provided	Y	
22/00086/FUL	Land At Bovisand Lane Staddiscombe Demolish 2 agricultural buildings and erect 2 dwellings (bungalows)	<b>Refuse</b>	Objection	N	
P/2021/1180	Land To The North Of, Totnes Road, Collaton St Mary Reserved Matters relating to Outline Application P/2019/0604. Matters for approval: Details of appearance, landscaping,	<b>Approval</b>	Neutral	N	Major Reserved Matters Application

App Ref	Application Type	Decision	In accordance with AONB advice / guidance	AONB Major	Comments
	layout, and scale, as stated in Appeal Condition 01.				
2254/22/HHO	Waterside East Portlemouth Replace lean-to with single storey side extension; build 2-storey rear extension and extend guest annexe plus new swimming pool	Conditional approval	Holding objection	N	Awareness raised by SHS
3334/22/HHO	Curlew Point Curlew Drive West Charleton Householder application for improvements to Slipway/Foreshore Access & repairs to Lime Kiln	Conditional approval	No objection subject to conditions	N	
MLA/2021/00454	Dittisham Pier repair work	Completed (discharging conditions)	-	N	
0510/22/VAR	Bovisand Harbour (Fort Bovisand), Wembury Application for variation of condition 2 (approved plans) of planning consent 3814/20/VAR	Refusal	-	N	
2305/22/FUL	Battisborough Point Battisborough Cross Replacement dwelling	Conditional approval	-	N	Revised plans October 22
P/2021/0658	Land At Brokenbury Farm, Galmpton Formation of a solar farm & associated equipment to include installation of fencing, CCTV, landscaping & ecological mitigation (revised plans received 1 September 2022)	Approval	-	N	
3012/22/FUL	Land at SX 8955 5095 Castle Road Kingswear Proposed new livestock building & associated works (Resubmission of 1602/21/FUL)	Refusal	-	N	
DCC/4317/2022	Land at Ngr 283449 45549, Strete, Relocation of Slapton Monument approximately 1.4km north east on land north of A379 to preserve the monument from storm damage and restoration of existing site	Conditional approval	-	N	
3388/22/FUL	Efford House Holbeton New ground mounted photovoltaic panels	Conditional approval	-	N	
P/2022/1159	Post Office Cambridge Road Brixham Single storey extension to create tea-shop / cafe and relocation of waste bins and access off public highway.	Withdrawn	-	N	
3479/22/FUL	Land at SX 675 511 Trehele Cross Modbury Provision of poultry building & associated infrastructure including private way	Refusal		N	Raised by member of the public
3431/22/FUL	Driftwood House Strete Demolish existing dwelling & construct new dwelling	Conditional approval		N	Previously approved under application number 1369/18/FUL
3694/22/HHO	Little Maryknowle Malborough Provision of Solar PV Panels on garage/ancillary building roof	Conditional approval		N	
MLA/2022/00420	The Boathouse, Mill Hill, Stoke Gabriel Refurbish and alter boathouse, including alter existing balconies	Completed (discharging conditions)		N	
3724/22/FUL	Motherhill Farm Main Road Salcombe Excavate & form earth bunds to form a natural screen, remove Devon bank and hedge to create additional access and level area	Refusal		N	Retrospective

App Ref	Application Type	Decision	In accordance with AONB advice / guidance	AONB Major	Comments
4130/22/HHO	Oystercatchers 79 Yealm Road Newton Ferrers Renovation & extensions to existing house, including works already undertaken as part of approval 2069/21/FUL	Conditional approval		N	
4381/22/HHO	15 Landmark Road Salcombe Alteration to front porch roof to create a balcony with new bi-fold doors, overall replacement windows & refurbishment	Conditional approval		N	
4398/22/HHO	11 Horn Hill Dartmouth Alterations & extension to existing property to include single storey extension, external works to front terrace & replace bay window	Conditional approval		N	
4423/22/FUL	Palladium Mews, Flat 1 Duke Street Dartmouth Alterations to external window & doors during restoration after fire	Conditional approval		N	
4175/22/HHO	Warren House Warren Road Thurlestone Installation of 2no air source heat pumps	Conditional approval		N	
2938/22/HHO	Gibbs Cottage South Pool Proposed single storey extension to the rear private garden & modifications to Grade II listed thatched cottage	Conditional approval		N	
2939/22/LBC	Gibbs Cottage South Pool Listed Building consent for proposed single storey extension to the rear private garden & modifications to Grade II listed thatched cottage	Conditional approval		N	
4147/22/HHO	7 Court Road Newton Ferrers Proposed single storey side extension	Conditional approval		N	
3795/22/HHO	De Cotte Coronation Road Salcombe Two storey side extension	Withdrawn		N	
3911/22/HHO	7 Sandquay Road Dartmouth Add a sail loft over a single garage	Conditional approval		N	
<b>9 Applications - Response submitted - LPA still to determine</b>					
2167/19/FUL	Gara Rock Hotel East Portlemouth READVERTISEMENT (Revised plans received) 3 additional holiday units within Gara Rock Resort	-	Objection	N	Application re-advertised, number of units reduced. Revisions and further information on compliance with earlier landscape conditions awaited <b>Further revisions Feb 23</b>
3053/21/ARM	Noss Marina Approval of reserved matters	-	Advice provided	Y	
3335/21/FUL	Site at land west of Collaton Park Newton Ferrers 125 homes	-	Objection	Y	Committee date 25.5.22, approved <b>Revised plans Feb 23</b>
3953/21/FUL	101 Yealm Road Newton Ferrers Demolish two-storey detached buildings & garage. Erect 2 four bed family homes and extension of quay to east of site providing new landing ramp for dwelling 2	-	Objection	N	
0141/22/FUL	Vipers Quay, Dittisham Repair jetty, including rebuild stone wall on northface and parts on east and west sides, remove and replace concrete base, remove part concrete slab on north end to drainage channel to facilitate work and replace afterwards	-	No objection - subject to conditions	N	Reconsulted on 29 Mar



App Ref	Application Type	Decision	In accordance with AONB advice / guidance	AONB Major	Comments
2786/20/FUL	West Buckland Barn Bantham READVERTISEMENT (Revised plans and amended development description) Erection of new agricultural store	-	Objection	N	
P/2022/0339	Site Adjacent To Brixham Cricket Club Change of use from agricultural land to outdoor football pitch.	-	Objection	N	
2928/22/FUL	71 Yealm Road Newton Ferrers Proposed boatshed and reinstatement of Landing (Resubmission of 0370/22/FUL) (Retrospective)	-	Objection	N	
3813/22/ARC	<b>Brewery Quay Island Street Salcombe Application for approval of details reserved by condition 13 (Flood Warning) 16 (Noise Impact Assessment) and 20 (Shutters)</b>		No comment	N	Planning consent 0434/20/FUL
<b>27 Applications - Responses in development</b>					
0868/20/ARM	Development Site SX612502 North Of Church Hill Holbeton Application for approval of reserved matters construct 14 dwellings	-	-	N	Following outline approval 25/1720/15/O; resubmission of 0127/19/ARM READVERTISED – Revised plans Aug
2089/20/FUL	Fish Hoek South Town Dartmouth Alter and extend 2 dwellings and erect 2 new dwellings	-	-	N	Related to withdrawn application no. 2781/18/FUL
4158/19/FUL	Development Site At Sx 734 439, Land to Northwest of junction between Ropewalk and Kingsway Park Ropewalk Kingsbridge 15 dwellings	-	-	N	READVERTISED – Revised plans
4774/21/FUL	Burgh Island Hotel, Bigbury On Sea Extend and refurbish Hotel and associated buildings; develop new staff accommodation, extend Pilchard Inn, extend Bay View Cafe	-	-	N	<b>DMC December - approved, subject to legal agreement</b>  Poss Heritage Coast NPPF 177 Major Reconsulted 9May22 - readvertised, revised plans
0915/22/FUL	Land off Bantham Beach Road Bantham Erection of replacement beach shower/toilet block, replacement village sewage treatment plant, new residents/mooring holders car park and new parking, ANPR system and associated signage on the beach road and car park	-	-	N	<b>Landscape Officer comments Feb 23 – holding objection</b>  Reconsulted 11Oct22
1178/22/ARM	Land Off Townstal Road Dartmouth Application for approval of reserved matters following outline approval 15_51/1710/14/O (Appeal APP/K1128/W/15/3039104) as varied by application reference 2609/19/VAR and 0479/21/VAR relating to access, appearance, landscaping, layout and scale for the construction of 46No. apartment extra care/assisted living scheme (Class C2) with provision of parking, gardens, access and associated works	-	-	N	<b>Appeal Feb 23 (non determination) APP/K1128/W/22/3308361 Final comments due 31.3.23</b>
2982/21/FUL	Land Opposite Butts Park Newton Ferrers Erection of 20 residential units	-	-	Y	READVERTISED – Revised plans,  (AONB Objected to original plans)
1516/22/CLP	Salcombe Retreat Malborough Proposed Siting of 52 Static Caravans	-	-	N	Raised by member of the public Resubmission of 1485/21/CLP
3421/22/ARC	"Allocated Site K5" Land at SX 729 440 West Alvington Hill Kingsbridge Application for approval of details reserved by conditions 4 (Wildflower), 5 (Grassland), 6 (Play Areas) and 9 (Energy Statement) of planning consent 2434/18/ARM	-	-	Y	Outline consent already established, now reserved matters  <b>Landscape Officer comments Nov 22 – support for discharge of conditions 4 &amp; 5</b>
2831/22/FUL	Land Adjacent To Stonehanger Court Devon Road Salcombe Construction of a two storey house	-	-	N	<b>Landscape Officer comments Nov 22 – objection</b>

App Ref	Application Type	Decision	In accordance with AONB advice / guidance	AONB Major	Comments
2643/22/VAR	Thurlestone Hotel Application for variation of conditions 2 (approved plans) & 8 (tree protection) of planning consent 1720/19/FUL	-	-	N	
P/2022/1119	Land To The South Of White Rock Aka Inglewood Paignton Major Reserved Matters application relating to outline consent P/2017/1133 for approval of (i) layout, (ii) scale, (iii) appearance, (iv) landscaping for the construction of 373 dwellings (Use Class C3), provision of serviced land for primary school and nursery school, internal access roads including vehicular and pedestrian/cycle access, the provision of public open space (formal and informal) and strategic mitigation.	-	-	N	Outline consent already established, now reserved matters
4160/22/ARM	Land Off Townstal Road Sx 858 508 Dartmouth Approval of reserved matters following outline approval 15_51/1710/14/O (Appeal APP/K1128/W/15/3039104) as varied by application reference 2609/19/VAR and 0479/21/VAR for layout, scale, appearance and landscaping for the construction of a 61No Apartment Extra Care/Assisted Living Scheme (use class C2) provision for car parking, gardens, access & associated works (Re-submission of 1178/22/ARM)			N	
4167/22/ARM	Land at SX 856 508 Dartmouth Application for approval of reserved matters seeking approval for layout, scale, appearance and landscaping for 9 residential dwellings and associated open space and infrastructure following outline approval 3475/17/OPA as varied by application reference 3078/21/VAR (Revised layout for 9 dwellings to replace previously approved layout for 7 dwellings (plots 138-144) under 3118/21/ARM).			N	
4178/22/HHO	Anchorage Beesands Single storey front extension, rear first floor extension & flat roof detail to existing pitched rear kitchen extension			N	
4393/22/HHO	Clanacombe Lodge West Buckland Kingsbridge Alterations & extension			N	Amended plans Feb 23
4426/22/HHO	1 Devon Villas Devon Road Salcombe Works to existing outbuilding/garage			N	Resubmission of 1620/22/HHO
4337/22/HHO	Overdart House Rectory Lane Dittisham Alterations and additions to existing dwelling			N	Resubmission of 2238/22/HHO
4412/22/FUL	Northern Berthing Facility Britannia Royal Naval College Dartmouth Replacement pontoons & gangway/ bridge access to/from existing quay wall & repairs to existing quay wall			N	
DCC/4334/2023	Steer Point Quarry, Brixton Variation of condition 1 of permission 0704/22/DCC (vary condition 2 of permission 1690/20/DCC (vary condition 4 of permission DCC/3638/2014 for Importation of inert waste for the purpose of filling the void as part of the restoration of Steer Point Quarry) to revise the design of the gravity outfall into Coflette Creek) to extend the period to import waste into the site for a further 6 months.			Y	

App Ref	Application Type	Decision	In accordance with AONB advice / guidance	AONB Major	Comments
0030/23/HHO	The Cider Cottage Manor Street Dittisham New boat & garden store in existing garden			N	
0211/23/HHO	Maryland Grand View Road Hope Cove Kingsbridge Rear extension, new porch & front balcony			N	
0180/23/FUL	Korniloff Residential Care Home Bigbury On Sea Demolish & alter timber veranda & chimneys stacks, alter windows, landscaping & enlarge hardstanding area, replacement external fire escape staircase			N	Retrospective
0132/23/HHO	20 Fairview Road Dartmouth Proposed redesign of previously approved parking deck & ancillary accommodation			N	
4303/22/FUL	Kingscliffe Beacon Lane Kingswear Replace conservatory with summerhouse			N	
0384/23/OPA	Land At Sx 652 517 Modbury Outline Planning Application (with all matters reserved apart from access) demolish existing buildings [construct] up to 40 dwellings on land at Pennpark, Modbury			N	READVERTISEMENT (Amended Description)
4146/22/HHO	38 Gratton Drive Chillington Proposed single storey rear extension, removal of hedge planting, new boundary wall/fence & terrace			N	

## Recommendations

7. The Partnership Committee is recommended to:
  - i. Note the level of resource commitment currently applied to the type of development management consultations, bearing in mind the recently updated AONB Planning Protocol (adopted March 2020), in addition to strategic and neighbourhood plan demand across the local planning authority areas. Keep this under review.
  - ii. Continue to provide early notification of significant planning matters to the AONB Manager to enable timely and appropriate action to be taken.