



Explorer

Discover the South Devon Area of Outstanding Natural Beauty

Including Events
June - October 2022



A guide on where to go and what to do and see in the South Devon AONB

Landscapes
for life
.org.uk



Explore & enjoy...

Welcome to our 2022 Explorer full of all you need to know to get out and enjoy the South Devon Area of Outstanding Natural Beauty!

As well as the coast and countryside events guide for 2022, take a look inside and you will find ideas for days out, places to visit and routes to explore. There is something for everyone and we hope that you find time to get out and see for yourself!

You can also find out more about what makes this beautiful part of the country so very special and discover some of the stories from people who live, work and play here...

..making the South Devon AONB a real Landscape for Life.



South Devon Area of Outstanding Natural Beauty...



What is an AONB?



An Area of Outstanding Natural Beauty (AONB) is a living landscape recognised as a national treasure by our government.

South Devon is part of the family of protected landscapes across Britain which also includes the National Parks. There are 46 AONBs in the UK – they include some of the most beautiful and cherished landscapes in Britain and need to be cared for now and in the future. For more information visit www.landscapesforlife.org.uk

What's special about South Devon AONB?

Areas of Outstanding Natural Beauty are vibrant landscapes which offer a wealth of opportunities for everyone to enjoy them and look after them. This guide gives you a helping hand to enjoy the South Devon landscape and discover its special features, from self guided walks, trails and rides to themed events, and ideas to enjoy local food, the best views, dark skies and wildlife.

A small team works on behalf of the AONB Partnership Committee. If you would like any more information about the AONB or work of the team, please contact us at the AONB office (page 35) or visit www.southdevonaonb.org.uk



**..Naturally Beautiful,
Nationally Protected**

Get out and explore

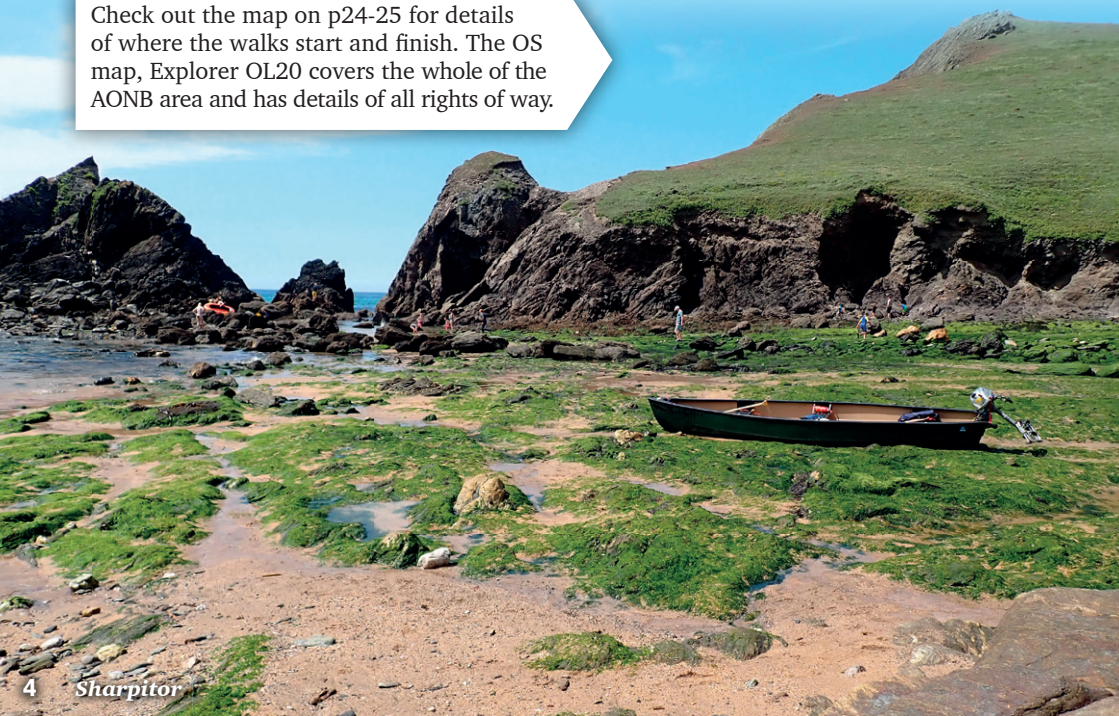
Discover what makes South Devon special for yourself - get out and explore

With 60 miles (96km) of the South West Coast Path and hundreds of miles of rights of way criss-crossing the area, one of the best ways of exploring the AONB is on foot.

There are various websites offering on-line walks with details of route and terrain, as well as points of interest along the way. Walking guides are also available from information centres and some bookshops. The AONB website has over 40 walks you can download for free. There is a huge variety to choose from; some suitable for seasoned walkers, others for those who like an extended stroll. They range in length from 2 to 12 miles and include details of facilities and access as well as information on wildlife, archaeology and history.



Check out the map on p24-25 for details of where the walks start and finish. The OS map, Explorer OL20 covers the whole of the AONB area and has details of all rights of way.





Feature
walk

A walk of towering cliffs and endless coastal views



Hope Cove to Bolberry Down

Scenes and stories of shipwrecks and the charm of Devon lanes winding between abundant hedgebanks with the beautiful, nestled fishing village of Hope Cove.

The walk is in these formats:



online



view on
your device



PDF to
download



Start and finish:

Outer Hope car park

Difficulty:

Moderate. 1 stile, 1 flight of steps. There are two ascents on the walk, though the climbing is long and steady rather than very steep.

Distance:

4.5 miles

Terrain:

Coastal footpath with some uneven ground; surfaced road; green lane; fairly even country footpath.



Other trails



The Dart Valley Trail links Dartmouth to Totnes and Greenway to Kingswear, offering 17 miles (27km) of glorious walking linked handily to buses, ferries and steam trains. This means you can walk all parts of the trail

- Circle the lower Dart from Dartmouth to Dittisham and Greenway to Kingswear using the ferries (9m, 14km)
- Use the Dartmouth - Dittisham ferries and walk just one side of the route (4.5m, 7km)
- Walk from Totnes to Dittisham (8-9m, 14km) and catch the ferry to Dartmouth then a cruiser back.



The Avon Estuary Walk links Bigbury-on-Sea to Bantham, via Aveton Gifford, making a 9 mile (14km) walk if you use the River Avon ferry. The ferry has restricted operating hours, so try to check the times before hand and include the ferry crossing early in your walk, so that you aren't rushing later on (see p11).



The Greenway walk links the National Trust's Greenway Estate to areas of nearby Paignton offering visitors a 'green' way to arrive! The 7 mile (11km) trail can be joined in Broadsands, Galampton and Churston and offers the best views of Torbay's coastlines and spectacular River Dart estuary in one walk.



Walking the Coast Path

Britain's longest national trail - the 630 mile (1014km) South West Coast Path goes right across the AONB. The path is well waymarked and a variety of guides cover the section from Berry Head in Brixham to Jennycliff in Plymouth.

Recommended day walks can be downloaded from www.southwestcoastpath.org.uk or there are guides available from Information Centres.

Further information

South West Coast Path National Trail
www.southwestcoastpath.org.uk

The Ramblers Association
www.ramblers.org.uk

Dartmoor National Park
www.dartmoor.gov.uk

Devon County Council
www.devon.gov.uk/prow

Geocaches in the AONB



GEOCACHING

22 geocaches have been placed along established walks in the AONB; however, prepare to go off the beaten track to hunt for the treasure! Please visit www.geocaching.com and search for the 'Your South Devon AONB Landscape' and 'What Makes South Devon Special' series.

Heritage

A long lived in landscape ...

There are lots of opportunities in the AONB to explore the past. You can do this on your own or with the help of others like the National Trust or English Heritage.

The Kingsbridge Cookworthy Museum opened in 1972. The galleries are full of permanent displays and special exhibitions. www.kingsbridgemuseum.org.uk

Dartmouth Museum is a small, fascinating museum in an atmospheric old merchant's house on the Butterwalk. www.dartmouthmuseum.org

Salcombe Museum - A treasure trove of models, paintings, photographs and artefacts tell the story of Salcombe's links with ships and the sea from ancient times to the Second World War. www.salcombemuseum.org.uk

Start Point Lighthouse was built in 1836 to protect shipping off Start Point in south Devon. The Lighthouse, sited at the very end of the headland, has guided vessels in passage along the English Channel for over 150 years. Details of tours at www.startpointdevon.co.uk



Start Point

Blackdown Rings was originally an Iron Age hillfort, probably built sometime after 400 BC. It was defended by a massive

earth and stone rampart topped with a timber palisade, and a deep outer ditch.

The site is owned by the **Arundel Trust**, there is a small car park and paths around the monument.

The National Trust owns and manages much of the coastline in the AONB in addition to woods and gardens. All are open for walking. www.nationaltrust.org.uk

Lupton House is a Grade II* listed building set in beautiful parkland. The Lupton Trust was formed in 2008 to bring the House and gardens back into use for the benefit of the community. www.discoverlupton.com

Heritage Open Days between 9th and 18th September

is England's largest festival of history and culture, bringing together over 2,500 organisations, 5,000 events and 40,000 volunteers. Every year places across the country throw open their doors to celebrate their heritage, community and history. A chance to see hidden places and try out new experiences – and it's all FREE. Further info re venues at www.heritageopendays.org.uk



Lupton House

English Heritage has four exciting castles to visit in South Devon at Bayard's Cove and Dartmouth Castle in Dartmouth, Totnes Castle and Berry Pomeroy Castle near Totnes. Further details at www.english-heritage.org.uk/visit/southwest



Out and about

Car free & care free ...



Stagecoach Service 3 to Plymouth via Kingsbridge is a beautiful scenic route through the South Devon villages of Dartmouth, Stoke Fleming, Blackpool Sands, Strete, Slapton, Torcross, and Kingsbridge. Change at Kingsbridge for Salcombe.

Start Bay

The route takes in the dramatic scenery as you travel down towards Blackpool Sands and then along the 3 mile stretch of Slapton Sands. You can choose to stop off at various villages including Stoke Fleming, Strete, or Torcross and do one of our circular walks or just explore the village heritage and hostellers!

Buses

For bus routes and timetable enquiries, please call traveline or refer to the website for up to date information.

www.travelinesw.com

or download the Traveline app

0871 200 22 33

Calls from landlines cost 12p per minute.

Bus timetables available from local information centres.



Park & Ride

For easy access to these busy town centres:

Dartmouth:

A3122 Dartmouth Outskirts TQ6 9LW.

Open 25th March to 31st October,

Open all week, charges 8am - 7pm

Ticket £5 (covers parking and bus trip).

Ticket £3 2pm - 7pm

Please be aware that the prices and times may be different over Dartmouth Regatta.

For latest information check

www.southhams.gov.uk

When there is no seasonal service from this car park, parking is free of charge and it is possible to walk into town. There is a public bus service available for journeys to and from the town, charges apply. The bus stop for this service is located nearby, outside Sainsbury's supermarket.

Salcombe:

NO SEASONAL BUS SERVICE IN 2022

A381 Salcombe outskirts. Charges apply all day/every day of the year £3 per day

For latest information check:

www.salcombetowncouncil.gov.uk

When there is no seasonal service from this car park it is possible to walk into town or there is a public bus service that runs daily (limited service on Sundays and Public Holidays). Bus stop 200m along main road, junction of Onslow Road and Main Road.





Cycling



Cycling in South Devon provides access to some of the best bits of the area, but the hills can be a bit challenging! There are a number of e-bike hire centres across the AONB which can help with our inclines - search online if you fancy trying one out.

Routes to try

Bikes can be hired from e-Xplore Devon. They will drop off/pick up and also have information on local routes. 01548 859745 www.e-xploredevon.co.uk.

Totnes is a good base to cycle from:

'The Cider Press Centre at Dartington'

A level route suitable for families with young children alongside the river. It's 2 miles in length with an optional extension to Hood Manor.

Totnes to Ashprington

A hilly off road route through open farmland with great views of the Dart. It's 3 miles to Sharpham Estate.

Further information

Sustrans - www.sustrans.org.uk

Trains

For mainline enquiries about times and fares contact 03457 484950 or go to www.nationalrail.co.uk

Steam railways

A lovely way to appreciate the varied landscape of the area. Steam trains run along the spectacular coast from Paignton to Kingswear for Dartmouth via the passenger ferry. Call Paignton station 01803 555872 or visit www.dartmouthrailriver.co.uk for details of times and fares. Combined river excursions are also available – the Round Robin which takes you from Paignton – Totnes by bus, down the river Dart from Totnes – Dartmouth and then back on the steam train from Kingswear to Paignton.



Out and about

On the water ...



Crossing the water

With five estuaries in the AONB, ferries are an important and enjoyable way to get around.

If you're walking the South West Coast Path they form an essential link across the estuaries. As they're dependent on tides and weather it's best to check the ferry services timetable before travelling.

For further details speak to an information centre (page 31).

Sense of adventure?

You'll be spoilt for choice in the AONB. Speak to an information centre (page 35) or search the internet for one of the many activity providers offering a range of experiences.

Canoeing -

- All year round activity
- Guided canoeing exploring the waterways of the AONB
- Canoe safaris
- Have fun on a canoe big enough for the whole family or smaller ones for a few of you.



Active water sports

Hire equipment or book up some lessons for professional coaching

- Kite surfing
- Kite buggying
- Coasteering
- Diving
- Surfing
- Sea kayaking
- Stand up paddleboarding.



By boat -

- Enrol for some lessons in Dittisham or Salcombe
- Take a guided trip to see some wildlife or local scenery
- If you fancy time on the water take a cruise down the Kingsbridge-Salcombe Estuary, or up the River Dart to Totnes.



Ferry timetable

Ferry timetables may be affected or restrictions apply - check journey with operator before travel. Exercise carefully, follow the Countryside Code.



	Yealm Estuary	Erme Estuary	Avon Estuary	Salcombe - Kingsbridge Estuary		
Type of Ferry	Passenger ferry	No ferry service	Passenger ferry	Salcombe - East Portlemouth passenger ferry	'Lady Mary' Kingsbridge - Salcombe passenger ferry	Salcombe - South Sands passenger ferry
Operating Period	8th April - 25th September	The Erme can usually be waded across one hour either side of low tide, when the water should not come much higher than an adults knee	8th April - 2nd October	Daily all year	April to October plus Christmas / New Year	26th March - October
Operating Times	The ferry runs between 10am - 4pm daily. Service may be restricted to the core hours of 10am - 12 noon and 3pm - 4pm each day, during bad weather or quieter times.		10am-12pm & 2pm-4pm every day	8.30am-5pm. 7pm finish in peak season	Vary with tides, check website for details	Summer 9.45am-5.30pm daily (6pm in August)
Routes	Between Noss Mayo (wide slip) Newton Ferrers (Yealm Hotel Steps) & Warren Point (coast path to Wembury)	Cross between Wonwell slipway and Mothecombe slipway	Bantham slipway to Cockleridge Ham (Bigbury-on-Sea)	Salcombe Jubilee Pier ferry steps to East Portlemouth Jetty	Kingsbridge Steamer Steps or Crabsell Quay to Salcombe Ferry Inn Steps	Salcombe centre (Whitestrand) to South Sands beach
Contacts	Bill Gregor 07817 132757		banthamestate.co.uk/getting-here/ferry/ 01548 560897	Simon Shortman 01548 842061 / 07769 319375	www.kingsbridge-salcombeferry.com	www.southsandsferry.co.uk 01548 561035

Dart Estuary								
Type of Ferry	Lower Dartmouth vehicle ferry	Higher Dartmouth vehicle ferry	Dartmouth Castle passenger ferry	Dartmouth - Greenway passenger ferry	Dittisham - Greenway passenger ferry	Dartmouth - Dittisham passenger ferry	Dartmouth - Totnes passenger cruises	Kingswear - Dartmouth passenger ferry
Operating Period	All year, except Christmas Day	All year	Easter - end October	1st March - 1st November	All year, except Christmas & Boxing Day	All year	April to October	All year, check website
Operating Times	Daily continuous service 7am - 10.55pm (8am on Sundays)	Daily continuous service 6.30am - 10.50pm (8am on Sundays)	Daily, 10am-5pm on demand.	Daily, see website for times	Daily, 9am - 5pm (peak season). Ring bell for service.	Daily, 10am - 5pm	Available on the website	Daily, 7.30am-6.55pm (9am start on Sunday)
Routes	Kingswear to Dartmouth South Embankment	Dartmouth North Embankment to Kingswear	Dartmouth South Embankment to Dartmouth Castle	Dartmouth South Embankment to Greenway	Dittisham to Greenway Quay	Dittisham to Dartmouth Double Steps	Totnes Steamer Quay to Dartmouth South Embankment	Dartmouth South Embankment to Kingswear
Contacts	www.southams.gov.uk/dartmouth-lowerferry	www.dkfb.co.uk 07866 531687	www.dartmouth-castleferry.co.uk	www.greenwayferry.co.uk 01803 882811	www.dittishamferries.co.uk Carlina 07818 001108 / Sandpiper 07907 528201	www.dartmouthrailver.co.uk 01803 555872		

Our AONB

Meet the team

For a change, we thought we would tell you where our best bits of the AONB are - you can't beat a bit of insider knowledge!

Vanessa Gray Office Manager

I have lots of favourite places in the AONB, it is impossible to choose one over another. I live in Dartmouth, a place steeped in history. There is Dartmouth Castle, remains of the original fortalice standing nearby and ruins of Gallants Bower above (to name a few). When the bluebells are in bloom I like to walk to Gallants Bower. The walk through the woodland is so peaceful and bluebells and other flowers are dotted along the way. At the top, at the flowering peak, there is a spectacular carpet of bluebells.



Adam Davison Project Officer

I love watching wildlife anywhere in the AONB. Prawle Point is the most southerly place in Devon and is an amazing biodiversity hotspot. It's a really important refueling stop for migrating birds as they arrive and depart from our shores to and from distant places around the earth. The stunning landscape here is home for some of the country's rarest and most threatened invertebrates and flowering plants. Some of the unspoilt coastline along the South West Coast Path here provides easy access to this unique, unforgettable place.



Roger English AONB Manager

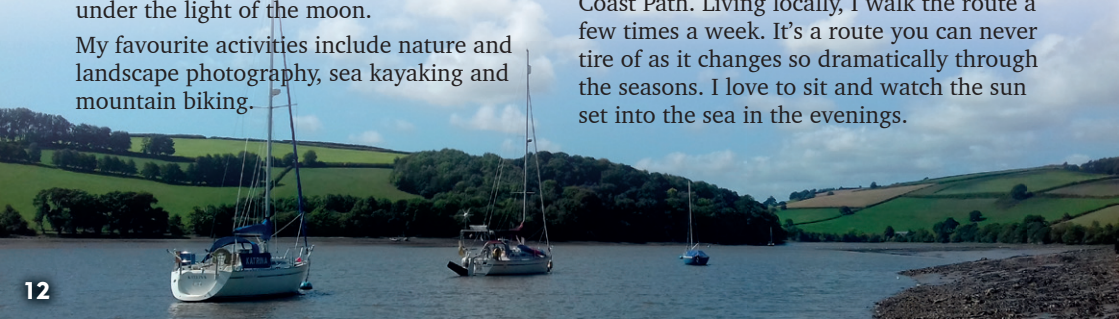
Almost an impossible task as completely spoilt for choice! If pushed – my favourite place is a sea kayak level view from on the waters of the Dart estuary at Middle Back near Stoke Gabriel. A place that changes with the seasons, state of tide and position of the sun. Equally spectacular under the light of the moon.

My favourite activities include nature and landscape photography, sea kayaking and mountain biking.



Phoebe Rhead Farming in Protected Landscapes Administrator

My favourite place in the South Devon AONB is the Noss Mayo stretch of the South West Coast Path. Living locally, I walk the route a few times a week. It's a route you can never tire of as it changes so dramatically through the seasons. I love to sit and watch the sun set into the sea in the evenings.





Nigel Mortimer

Estuaries Officer

Under the sea, under the ocean ...

Ask me where my favourite place is in the AONB and I'd probably give a different answer most days, depending on how I'm feeling! I love the rugged coasts around Start Point and Bolt Head, up a quiet creek (with a paddle!) of any of our wonderful estuaries, guddling around rockpools or taking the plunge and snorkelling along rocky shorelines.

Nicky Bailey

Community Projects Officer

I love pretty much everywhere in our beautiful AONB whether out walking, running, sea swimming or just enjoying the view! But if I had to pick a favourite, it would be Bantam beach with friends and family, having a BBQ after everyone else has left and watching the sun set over Burgh Island – perfect.



Henry Lucas

Farming in Protected Landscapes Officer

Living in Dartmouth has its many perks; with music festivals and delicious food festivals, there's plenty of fresh air when you've tried out the numerous local pubs and cafes. There's still quite the connection to old Devon life in town too, with the annual Christmas agricultural fatstock shows making use of the old market, to show the public what farming is about. Dartmouth is definitely a fantastic base, which I'm lucky to call home.



Diane Lethbridge

Communications Officer



Mothecombe is my favourite spot for New Years day or mid-summer - with beautiful unspoilt beaches and fantastic coast path walks for humans and their dogs alike – see our interpretation boards for more

info. The School House café next to the car park serves great local fare. If its summer, Surfing Cow ice cream are right next door and you just have to stop and try a new flavour on each visit.



News snippets



South Devon AONB Nature Recovery Plan

The South Devon AONB is a special, tranquil, beautiful landscape which is home to people and wildlife, with valuable habitats existing alongside communities living and working here.

This unique, diverse landscape creates an exceptional environment where rare plant, insect, bird, and mammal species can flourish.

Along with all the AONBs in England and Wales, we are in the process of drawing up a nature recovery plan for the area, working with landowners, conservation organisations, neighbouring AONBs and Protected Landscapes, and the wider community. Our aim is to engage, inspire and inform positive action in all of the protected landscape including its estuary waters and seabed.



Saving Devon's Treescapes

The Saving Devon's Treescapes project is offering free advisor visits to landowners across Devon, providing hope and action in the face of the alarming changes that are already affecting our precious treescapes, such as Ash dieback.

The project has already helped businesses plant hundreds of trees to help strengthen Devon's treescapes and enable wildlife to thrive.



If you are a smallholder, community group, school or house with gardens/parkland, contact Jon Freeman: jfreeman@devonwildlifetrust.org

New citizen science projects are supported by an app easily downloaded from www.devontreescapes.com

Food matters

74% of the AONB landscape is farmed with a patchwork landscape of farms producing milk, beef, and lamb in particular. The South Devon Area of Outstanding Natural Beauty boasts a vibrant food and drink economy - the countryside is rich, varied, and immensely productive.



Stokeley Midsummer Fayre, Sat 25th June. Local artisan food and crafts. See P29

Dartmouth Food Festival

**21st October -
Sun 23rd October**

Having grown from humble beginnings in 2002 into a first class feast of entertainment featuring workshops, seminars, tastings, competitions, demonstrations and over 100 stalls.

www.dartmouthfoodfestival.com

Farmers' Markets in the AONB

Shopping at a farmers market means

- Buying fresh, seasonal produce that's only travelled a short distance
- Meeting the people who've grown, raised or made the products
- Finding specialist and unusual produce and crafts
- Enjoying the markets friendly atmosphere
- Benefitting the local economy and being part of the community.

Kingsbridge - Kingsbridge Farmers and Local Producers Market is on 1st and 3rd Saturdays each month on the Quay from 9.30am - 3.30pm. More info at: enquiries@Kingsbridgefarmersmarket.co.uk

Dartmouth - The Farmers Market is held on the 2nd Saturday of each month from 9am till 2pm in the old Market Square. Hosted by The Coastal Kitchen, email hello@coastalkitchendevon.com

In addition to these markets there is a good market in Totnes and Dartmouth on Fridays with a selection of local produce from the AONB on sale.

Tips for shopping and eating out

- * When shopping try to make a point of sourcing local produce to really experience what wonderful food this area has to offer.
- * If you eat out locally do make a point of enquiring where the ingredients are sourced from - it helps to highlight to businesses that consumers care about traceability and quality local food and encourage them to seek out more local suppliers.
- * Whenever you purchase food and drink from the AONB you are helping to sustain the local economy and the local landscape.

Life on the Edge



Six-banded Nomad bee © Steven Falk

What is Life on the Edge?

Life on the Edge (LotE) is a multi-partner project, led by the South Devon AONB team with our main partner, Buglife, along with the National Trust, Torbay Coast and Countryside Trust and the South West Coast Path. It aims to restore viable populations of some of the UK's rarest insects living along the South Devon coast between Berry Head and Wembury, including the last known colony of the Six-banded nomad bee. This bee faces imminent extinction unless action is taken. The project will also enable the recovery of over 20 other threatened invertebrates including the Long-horned bee, Short-necked oil beetle, and Moon spider.

Why is it needed?

Saving these species and giving them a safer long-term future means expanding and reconnecting the traditional coastal landscapes on which they depend, creating more flower-rich fields and highway verges, carefully managed scrub mosaics, strategic hedgerow connections, and more wildlife-friendly parks, churchyards, school grounds and private gardens. The result will

be a coastline, and its connected hinterland, that is buzzing with wildlife, packed with wildflowers and a treat for the eye for residents and visitors alike.



Long horned mining bee
© Andrew Whitehouse

wildflower meadow
at Prawle Point
© Andrew Whitehouse

Life
on the
Edge



Working together
to restore a coastline
buzzing with wildlife

Made possible with



Heritage
Fund



Art projects to engage lots of people & have fun!



Mediterranean oil beetle
© John Walters

Who will be involved?

It's a mission that needs the support and engagement of the whole community, from landowners and farmers to parish councils and school children, providing opportunities for everyone to get involved and make a real difference for these extraordinary and highly vulnerable species.

Community engagement will be key to this success of this project. We will be developing a programme of events and activities, working with local schools and community groups, devising and installing interpretation, circular trails and audio guides to widen our audiences, creating opportunities to get involved with arts projects, educational activities and volunteering.



working with all ages of people

We will be focusing interventions at 5 hotspots along the South Devon coast, from Berry Head in the east to Wembury in the west, then working with local communities and landowners radiating out from these spots. There will be plenty of opportunities to get involved!

How will the project be delivered?

The project will run for an 18 month development phase, then a 5 year delivery phase and will cost just over £4,200,000, with a bid to the National Lottery Heritage Fund of around £2,200,000. The rest of the project costs will be met through other funding sources, sponsorship and non-cash contributions.

Initial Funding of £220,000 has been secured from the Heritage Fund to complete the 18 month development phase. During this time, we will be hatching plans, trialling activities, testing interventions and engaging local communities, landowners, businesses and organisations to commit to being involved. Keep an eye out for events and volunteering opportunities, or if you would like to get involved, have an idea for fundraising, or you are a landowner or a community group that might like to work with us – drop us a line on enquiries@southdevonaonb.org.uk

One of our hotspots - Start point to Prawle Point



We have made a 10 minute film to introduce **Life on the Edge** - you can see it here:

www.southdevonaonb.org.uk/projects/life-on-the-edge



South Devon Coastal Heritage Project

There are over 55 Scheduled monuments along the coast of the South Devon AONB and little work has been done to interpret them to our many visitors or the local community.

Some of them are on the Historic England 'At Risk' register and we are working with partners to improve their status and ensure that they are there for future generations to learn from and enjoy, ultimately removing them from the register.

We secured £14000 funding from Historic England in 2021 for a pilot phase project carrying out feasibility studies, geophysics and surveys. We have now secured another £39,944 from Historic England, with a further £4600 awarded from South West Coast Path Association and around £25,000 from Natural England through the new England Coast Path scheme. The total project will also benefit from around £50,000 value of in kind contributions and volunteer time. This delivery phase of the project will run for 3 years and involve real on-the-ground improvements including consolidation of structures, vegetation control and management, interpretation, events and community digs.



The South Devon Coastal Heritage Project is run in partnership with the National Trust, South West Coast Path Association, Devon County Council and Historic England. Also involved are local landowners, community history groups, local history museums, and English Heritage Trust.

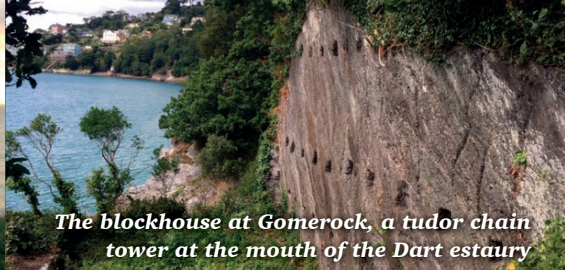
The project area covers two areas within the South Devon AONB: Bolt Head to Bolt Tail coastline around Salcombe; and Dart Estuary area around Dartmouth. It covers 11 Scheduled monuments as well as other designated sites.

Bolt Head to Bolt Tail

This area includes monuments from a huge time period ranging from an Iron Age Hillfort at Bolt Tail, Bronze Age barrows, prehistoric hut circles on the coast along from Soar, medieval farmsteads at Middle Soar, a Napoleonic signal station at West Soar and a civil war castle at Salcombe.



Bolt Tail Iron Age Hillfort



The blockhouse at Gomerock, a tudor chain tower at the mouth of the Dart estuary

Defending the Dart - mouth of the Dart estuary

These archaeological features/sites cover 600 years of history- concentrating on Scheduled sites such as the C15th chain tower at Gomerock in Kingswear, the civil war

encampment, at Gallants Bower, Dartmouth Castle complex, Bayards Castle, the WW2 battery at Froward point and D Day landing craft maintenance ramps at Noss on Dart.

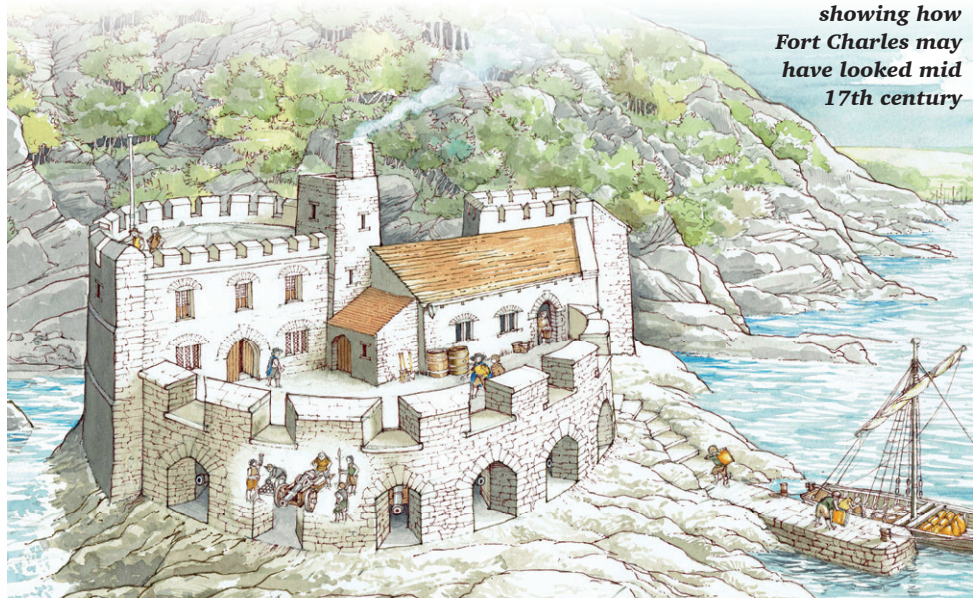


Illustration showing how Fort Charles may have looked mid 17th century

Activities planned for the delivery phase of this project include:

- Interpretation of the sites - audio trails, interpretation panel, guided walks, downloadable trail guides
- An interactive webpage to host the data, reports and interpretive material
- Community digs on the Bolt Head - Bolt Tail area
- Volunteer programme
- Arts events activities
- Improved way marking
- Vegetation management of the scheduled sites to avoid further damage
- Visitor management (through signage, education)

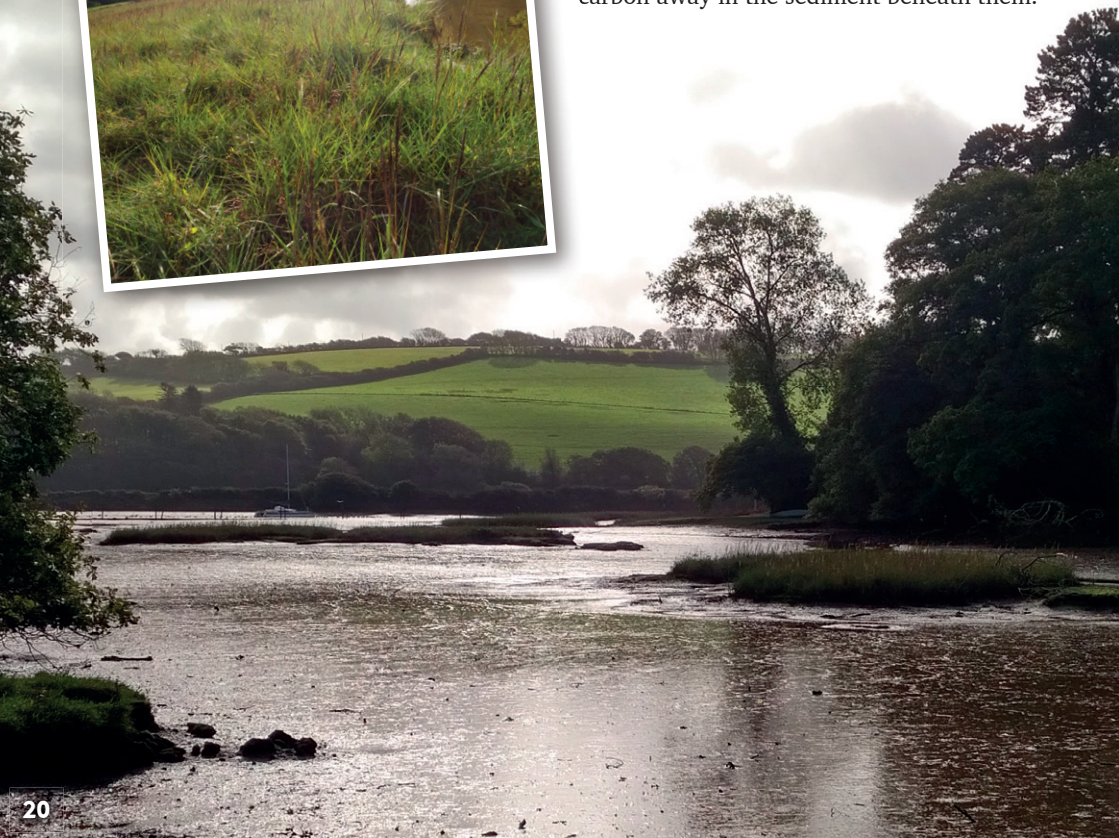
If you would like to know more about the project see www.southdevonaonb.org.uk or contact nicky.bailey@southdevonaonb.org.uk

Estuary Wildlife

Our estuaries are the final stretch of our rivers or streams, where the freshwaters meet and mix with the tidal saltwater from the sea. The changeable salinity of the water makes estuaries a very challenging place to live for many life forms.

Fed by the natural runoff of the water catchments, estuaries are immensely productive and support incredible populations of those plants and animals that can survive the ever changing conditions. Many species survive these by migrating with the tidal cycle.

With rising interest and concerns over climate change and carbon levels, two estuarine communities have been growing in renown– saltmarshes (including tidal reedbeds) and seagrass meadows. It is the plants that are the heroes here, themselves capturing significant amounts of carbon but more importantly helping to lock that carbon away in the sediment beneath them.





Estuaries also lock away a significant amount of the carbon that settles within them from both their water catchment areas and brought in by the tides. For this reason we should certainly include the much maligned mudflats too, although here the heroic plants are microscopic, some planktonic and joined by bacteria involved in a wildly complex and bizarre biochemistry within the mud itself.

Most of the larger animals that we love to see around our estuaries, from seals to kingfishers, are ultimately dependent upon these estuarine communities ... as well as those that we rarely even glimpse but love to know they're there, such as porpoise and otters. Our estuaries may not support the incredible biodiversity of tropical rainforests but area for area, they are as productive and way more important for the long-term storage of carbon, so-called 'blue carbon'.

South Devon AONB's Estuaries Partnership positively supports greater awareness of the importance of our estuaries for all the ecosystem services and benefits we enjoy and depend upon from them for.

It is making ever greater efforts to conserve and enhance our local saltmarshes and seagrass meadows ... not forgetting those marvellous mudflats too!

Whether you enjoy watching the wildlife, open water swimming or are concerned about climate change - we all have a part to play in improving the water quality and health of our estuaries.

Watch our fun short animation The Drip, to find out how small changes you make at home can have a really big impact ! You can find it on our website www.southdevonaonb.org.uk



Farming in Protected Landscapes Programme



The South Devon Area of Outstanding Natural Beauty (AONB) Unit has completed year one of a funding programme for land managers in the protected landscape, funding a wide range of initiatives.

The programme, launched on 1st July 2021 is part of Defra's Agricultural Transition Plan and it will run until March 2024.



Stone wall renovation at Holsome Park



Through the programme, farmers and land managers can be supported to carry out projects that support nature recovery, mitigate the impacts of climate change, provide opportunities for people to discover, enjoy and understand the landscape and cultural heritage, or support nature-friendly, sustainable farm businesses. It's a programme of funding for one-off projects covering these areas of work, not an agri-environment scheme.

The Farming in Protected Landscapes Programme (FiPL) pays for projects that, in the opinion of the Local Assessment Panel provide value for money and meet at least one of the outcomes of the themes of climate, nature, people and place. In addition to this the project must meet at least one of the objectives of the AONB Management Plan. The panel is made up of local farmers, and representatives from Natural England, RSPB, the AONB Partnership Committee and South Hams District Council.

During its first year of operation the fund has awarded funds for stone wall renovation, new hedgerows, farm shops, information boards, pond creation, foot paths, bird boxes, orchards, carbon soil testing, cart pond restoration, tree planting, and specific machinery items. The full list can be found on the AONB website www.southdevonaonb.org.uk/fi-pl-funded-projects-2021-2022

For more information on the programme and how to apply please see: www.southdevonaonb.org.uk/opportunities-for-farmers-2021-24





There is so much going on in the South Devon AONB that we can't possibly fit it all in here! There are lots more events and full details of all the ones printed in this programme (including website addresses) on our website. It is being revamped and updated so that it will work even better on all mobile devices. Check it out and get exploring!

www.southdevonaonb.org.uk

Key

Beaches	Main beaches	Ferries
Event start points	Event start points	Low tide crossing point
Downloadable trail start/finish points	Downloadable trail start/finish points	Information Centres
www.southdevonaonb.org.uk		South Devon AONB

Contains Ordnance Survey data © Crown copyright and database right 2022. Ordnance Survey. 0100057066



Daynes Farm

Sharpham House

Stoke Gabriel

Berry Head

Brixham

Dittisham

Dartmouth

Kingswear

Stoke Fleming

Blackpool Sands

Strete

Kingsbridge

Slapton

Stokenham

Stokeley Farm Shop

Beeson

Torcross

Beesands

Hallsands

Chivelstone

Combe Sands

Bolt Head

Prawle Point

Start Point

Start Bay

Torbay

A385

A385

A385

River Dart

River Avon

A381

A3122

B3264

A3719



Your guide to events in the AONB for 2022

This programme features walks, talks and events organised by South Devon Area of Outstanding Natural Beauty Unit (AONB) and other organisations that help us to enjoy, look after and manage the area.

We hope that you'll find lots of ideas for days out and ways to enjoy our stunning AONB, as well as events which will help you understand more about looking after, and living, in a protected landscape.

When attending these events, please remember:

- Wear sensible footwear and clothing.
- Some events are held on uneven ground or rocky beaches; please take extra care.
- If not stated, please check with the organiser if dogs are allowed on the event.
- Refreshments suggested in this programme are optional and only included in the price of events if stated.
- Where this programme lists activities run by another organisation or company, the responsibility for that event lies with them.

Life on the Edge!

Look out for a whole programme of exciting events and activities as part of our new National Lottery Heritage funded project! We will be organising a whole host of events to help you find out more about the amazing rare and endangered insects who live on the coast in South Devon and how we are working with partners, landowners and the local communities to restore wildflower meadows to help them thrive! See www.southdevonaonb.org.uk/life-on-the-edge for more details and sign up to our newsletter to keep you updated!

You can find us at The Box in Plymouth on 9th, 11th and 13th August and Torre Abbey in Torbay on Wednesday 3rd August, as well as at Yealmpton Show on Wednesday 27th July!



Rockpool rambles

Various dates May - Sept - see website for details Devon wildlife Trust

Join Devon Wildlife Trust for a Rockpool Safari and we'll take you on a guided tour of some of the best rockpools in Devon. All children must be accompanied by an adult and we suggest this event is for children aged 4 years+. See website for more details and to book - www.wemburymarinecentre.org. £5 per person

Meet at Wembury Marine Centre, PL9 0HP



Brixham fish market tour and seafood breakfast

1st, 8th 15th, 22nd & 29th June
6.20am

Brixham Trawler Agents

A chance to see behind the scenes at the world famous Brixham fish market, finishing off with a delicious fish breakfast at Rockfish.



Age 15+, **booking essential**,

see <https://therockfish.co.uk/products/fish-market-tour>

Sorry not suitable for wheelchairs £25 per person.

Meet at entrance, New Fish Quay, Brixham TQ5 8AW

New Barton Farm walk

Tues 7th June 2pm - 5pm

National Trust

Join a National Trust ranger for a guided tour of this important coastal site. Visit areas not previously open to the public and learn about the Trust's ambitious plans to improve the farm for wildlife. 2-3 mile walk, some uneven ground. Suitable for over 14 year olds. Bring a drink and snack.

Booking essential, call 01752 346585. Free but donations welcome.

Meet at New Barton Farmhouse, Wembury, PL9 0EF

Torbay discovery walks - Broadsands, The Grove and Churston

Thurs 9th June 10am start

Torbay Coast and Countryside Trust

Come and explore Torbay Coast and Countryside Trust's amazing footpaths. Each month we will follow a circular walk through beautiful landscapes

including woodlands and coastlines across Torbay. Come and discover a different walk each month. Moderate walk, approx 5km (3 miles)

Booking essential, see www.countryside-trust.org.uk/whats-on. £7.50 per person.

Sharpham Bioblitz 2022 Fri 10th June - Sat 11th June Sharpham Trust

Help record the wildlife on the Sharpham Estate, by taking part in a packed programme of events where YOU are the citizen scientists! Lots of exciting activities including bat detecting, moth trapping, surveys and hunts. See www.sharphamtrust.org for more information. Free.

Meet at Woodland Campsite, Sharpham House, Ashprington TQ9 7UT

LEAF OPEN FARM SUNDAY



12th JUNE 2022

www.farmsunday.org

VISIT A FARM AND DISCOVER THE WORLD OF FARMING

Open Farm Sunday at Daynes Farm

Sun 12th June 11am - 4pm

The Camp family with South Devon AONB

Come and meet farmer David Camp and find out how he manages his organic farm. Explore the farm, see the cows, goats, chicks, sheep and lambs. Find out what crops David grows to feed his stock, watch the sheep shearing, spinners and have a go at quiz and craft activities.

Meet at Daynes Farm, Harberton, TQ9 7FB



Forage for wild medicine day

Sun 12th June 10am - 4.30pm
Sharpham Trust

Discover the amazing world of wild herbal medicine and learn to make your own with Brigit-Anna McNeill. Bring a packed lunch, warm clothes, waterproofs, sturdy shoes and water. **Booking essential**, see www.sharphamtrust.org. Adult £55.

Meet at Woodland Campsite, Sharpham House, Ashington TQ9 7UT

Bug hunting and homemaking!

Saturday 18th June
2pm - 4pm
South Devon AONB and St Sylvester's church renovation and community project



Join us to hunt for minibeasts living in the churchyard and help make some new homes for them! Find out more about the exciting works that have happened at the church and our Life on the Edge project. There will also be a chance to have a look around the inside of the church and find out about the renovations carried out as part of the National Lottery funded project.

Meet at Chivelstone parish church, Chivelstone TQ7 2LY



Coastal strolls and an introduction to the hotspots

Join us for a series of short easy walks to find out more about our new Life on the Edge project, supported by the National Lottery Heritage Fund.

We are working with our partners, landowners and local communities to restore wildflower meadows along the South Devon Coast, a vital habitat for rare and endangered invertebrates. Discover more about each of our 5 hotspots during National Insect week, find out what is planned, how you could be involved and more about the wildlife that calls this stretch of the AONB home!

These free events are aimed at anyone with an interest in the wildlife and landscape of South Devon, the walks will around 2 - 2.5 miles and may involve some inclines. You do not need to book - just turn up!

Prawle Point to Start Point hotspot
Tuesday 21st June 7pm - 8.30pm

South Devon AONB

Meet at East Prawle village green, Kingsbridge TQ7 2BY

The Erme hotspot

Wednesday 22nd June
7pm - 8.30pm

South Devon AONB and The Flete Estate

Meet at Mothecombe beach car park, Mothecombe, PL8 1LB

Bolt Head to Bolt Tail hotspot

Thursday 23rd June 7pm - 8.30pm
National Trust South Devon Countryside

Meet at Rangers office, Southdown Farm, Malborough TQ7 3DU

Brownstone to Berry head hotspot

Saturday 25th June 10am - 11.30am

National Trust English Riviera

Meet at Coleton Camp car park, Kingswear, TQ6 0EH

Wembury hotspot

Monday 20th June 5pm - 7pm
National Trust South Countryside

Meet at Wembury Beach car park, Church Road, PL9 0HP

Discover more about each of our 5 hotspots during National Insect week,



Berry Head guided nature walk

Thurs 23rd June 10am - 12.30pm
Torbay Coast and Countryside Trust

Join local Berry Head expert Nigel Smallbones for an informative walk around the headland. Having worked and lived on the nature reserve for many years, he will be sharing his in depth knowledge and insights of Berry Head's history, geology, flora and fauna.

Booking essential, see www.countryside-trust.org.uk/whats-on. £10 per person.

Berry Head bat walk

Fri 24th June 8.30pm - 10.15pm
Torbay Coast and Countryside Trust

Find out more about the rare Greater Horseshoe bats which live in the caves in the limestone cliffs.

Booking essential, see www.countryside-trust.org.uk £8.50 per person.

Meet at Berry Head main car park, Brixham. TQ5 9NP

Stokeley midsummer fayre

Sat 25th June 10am - 4pm
Stokeley Farm Shop

A showcase of the wonderful local, artisan food and craft produce that our farm shop has to offer.

See www.stokeleyfarmshop.co.uk for more information. Free.

Meet at Stokeley farm shop, Stokenham. TQ7 2SE



Snorkel safari

Sat 25th June 10am - 12.30pm
Devon Wildlife Trust

Join our fully trained BSAC instructors for a snorkel safari around Wembury Bay. Suitable



for beginners or more advanced snorkellers. Full kit provided. Children must be 8+ to take part. **Booking essential**, see www.wemburymarinecentre.org/events. £25 per person.

Booking essential, see www.wemburymarinecentre.org/events. £25 per person.

Meet at Wembury Marine Centre, Wembury. PL9 OHP

Sharpham Rewilding tours

Sun 3rd July 10.30am - 12pm & 1.30pm - 3pm
Sharpham Trust and Ambios

A fantastic opportunity to explore the fields that have been rewilded since April 2020. Learn all about the riverside rewilding project Wild for People, which has turned 50 acres of conventional farmland back to nature. Spot wildlife and grazers, including the Mangalitza pigs, as you are led through the fields alongside the Totnes-to-Sharpham foot/cycle path. **Booking essential**, see www.sharphamtrust.org. Free.

Meet at the viewpoint, Sharpham Estate Ashprington TQ9 7UT

South Down Farm walk

Sun 3rd July 10am - 12pm
National Trust

Join a National Trust ranger for a guided tour of this important and stunning coastal farm. Learn how the Trust and the tenants have been working hard to improve the value of the farm for wildlife. 2-3 mile walk, some uneven ground. Suitable for over 14 year olds. Bring a drink and snack. **Booking essential**, call 01752 346585. Free but donations welcome.

Meet at South Down Farm, Malborough TQ7 3DU park at the National Trust Rangers office



Magical meander and make

Sun 3rd July 10am - 1pm
Sharpham Trust

Spend an inspiring morning on a creative adventure of craft and making in the beautiful, natural surroundings of the Sharpham Estate's woods and meadows. For people aged 6 to 90+! **Booking essential**, see www.sharphamtrust.org. Adult £5, child free.

Meet at the woodland car park, Sharpham Estate Ashprington TQ9 7UT



Brixham fish market tour and seafood breakfast

6th, 13th, 20th, 27th July 6.20am
Brixham Trawler Agents

A chance to see behind the scenes at the world famous Brixham fish market, finishing off with a delicious fish breakfast at Rockfish. Age 15+, **booking essential**, see <https://therockfish.co.uk/products/fish-market-tour> Sorry not suitable for wheelchairs £25 per person. *Meet at entrance, New Fish Quay, Brixham TQ5 8AW*



Torbay discovery walks - Berry Head history loop

Thurs 7th July 10am start
Torbay Coast and Countryside Trust

Come and explore Torbay Coast and Countryside Trust's amazing footpaths. Each month we will follow a circular walk through beautiful landscapes including woodlands and coastlines across Torbay. Come and discover a different walk each month. Easy walk, approx 2.6km (1.5 miles) **Booking essential**, see www.countryside-trust.org.uk/whats-on. £7.50 per person.

Old Barton Farm walk

Sat 9th July 2pm - 5pm
National Trust

Join a National Trust ranger for a guided tour of this important coastal site. Visit areas not previously open to the public and learn about the Trust's ambitious plans to improve the farm for wildlife. 2-3 mile walk, some uneven ground. Suitable for over 14 year olds. Bring a drink and snack. **Booking essential**, call 01752 346585. Free but donations welcome.

Meet at Old Barton farm, Wembury, PL9 0DN

St Sylvester's celebration open day

Sat 16th July 12pm - 4pm
St Sylvester's church renovation and community project

Join us to celebrate the exciting work that has gone on at Chivelstone Church! There will be lots to do for all the family including music, tours, bell ringing, bug hunting in the churchyard, treasure hunts and local history displays. Explore the Church with its fascinating medieval rood screen, pulpit, and lots more. Enjoy refreshments and finding out more about the project supported by National Lottery Heritage Fund. See www.eastprawlehistorysociety.co.uk/church-repair-project for more details. Free.

Meet at St Sylvester's Church, Chivelstone, TQ7 2LY.



Seagrass Spotters

Sat 16th July 1.30pm- 3.30pm
South Devon AONB

Take a dry peek into the world of our underwater seagrass meadow jungles at low tide when they are exposed for all to see! Wear shoes that can get wellies – some sharp or uneven ground. Dogs on short leads only. Free



Meet by the Whitestrand slipway, near the Harbour office, Whitestrand, Salcombe TQ8 8BU

Snorkel safari

Sat 16th July 12.30pm - 3pm
Devon Wildlife Trust

Join our fully trained BSAC instructors for a snorkel safari around Wembury Bay. Suitable for beginners or more advanced snorkellers. Full kit provided. Children must be 8+ to take part. **Booking essential**, see www.wemburymarinecentre.org/events. £25 per person.

Meet at Wembury Marine Centre, Wembury. PL9 0HP

Balsam bashing

Tues 19th and 20th July 9am - 12.30pm
Slapton Ley Field Centre

Come and explore how the nature reserve is managed with our Ranger and learn the importance of its habitats to the wildlife that lives here. Then get hands on with some conversation tasks to help our

wildlife have some where great to live. **Booking essential**, see www.field-studies-council.org/locations/slaptonleyannr and click on walks. Free. Meet at Slapton Ley Field Centre, Slapton, TQ7 2QP

Berry Head bat walk

Fri 22nd July 8.15pm - 10pm
Torbay Coast and Countryside Trust

Find out more about the rare Greater Horseshoe bats which live in the caves in the limestone cliffs.

Booking essential, see www.countryside-trust.org.uk. £8.50 per person

Meet at Berry Head main car park, Brixham. TQ5 9NP

School holiday forest days

Throughout the school holidays
9.30am - 3.30pm
Forest and Beach

Our days have received outstanding reviews from both children and parents Every School holiday Forest and Beach, Beeson offer days for children aged 5-14yrs +. Fire lighting, shelter building, Archery days, Beach days, exploring with friends in the outdoors. **Booking essential**, more info at

www.forestandbeach.co.uk. Child £35.

Meet at Forest and Beach, Beeson TQ7 2ED

Yealmpton Agricultural Show

Wed 27th July 9am - 6pm

Come and find our stall at this annual agricultural show where we will be showcasing our farming and Life on the Edge projects. There is lots to do and see at this annual show with exhibitors, animals, delicious food and countryside crafts. Adult £12.50, child over 5 £4 Meet at Kitley Lawns, Yealmpton PL8 2NN

Nighttime rockpool safari

Thurs 28th July 9.45pm - 11pm
Wembury Marine Centre

Our expert staff and volunteers will take you on a guided rockpool safari by torch light to meet and learn about some of Wembury's most famous inhabitants and see what they get up to after dark!

Booking essential. www.wemburymarinecentre.org. £8 per person

Meet at Wembury Marine Centre, PL9 0HP



Berry Head guided nature walk

Thurs 28th July 10am -12.30pm
Torbay Coast and Countryside Trust

Join local Berry Head expert Nigel Smallbones for an informative walk around the headland. Having worked and lived on the nature reserve for many years, he will be sharing his in depth knowledge and insights of Berry Head's history, geology, flora and fauna. **Booking essential**, see <https://www.countryside-trust.org.uk/whats-on>. £10 per person.

Toddlers rockpool safari

Sun 29th July 12.30pm - 1.30pm

Wembury Marine Centre

Join us for a mini rockpool safari aimed at preschool aged children. We'll stay close to the beach and help you introduce your little ones to Wembury's crabs and starfish! Don't forget your wellies! Please leave your fishing nets at home, we'll use our hands and buckets and follow the Seashore Code.

Booking essential. www.wemburymarinecentre.org. £5 per child.

Meet at Wembury Marine Centre, PL9 OHP



Bees, butterflies and bugs! Life on the Edge on the road

Pop along to find out more about our National Lottery funded Life on the Edge project and have a go at some minibeast makes! These sessions are aimed at children up to 12 and their families.

Drop in
Wednesday 3rd August

10am - 12pm and 1pm - 3pm
South Devon AONB

Meet at Torre Abbey Learning Lab, Torre Abbey, Torquay.
TQ2 5JE

Drop in

Tues 9th, Thurs 11th & Sat 13th August

10am - 12pm and 1pm - 3pm

Meet at The Box, Tavistock Place, Plymouth PL4 8AX



Bat watch

Mon 1st Aug 8.30pm - 11pm
Slapton Ley Field Centre

Explore the night-time world of these magical creatures. Watch them emerge from their roost, follow their foraging routes, and use our bat detectors to hear their weird and wonderful calls. **Booking essential**, see www.field-studies-council.org/locations/slaptonleynnr and click on walks. Adult £8, child £5.

Meet at Slapton Ley Field Centre, Slapton, TQ7 2QP

Brixham fish market tour and seafood breakfast

3rd, 10th, 17th, 24th, 31st
August 6.20am
Brixham Trawler Agents

A chance to see behind the scenes at the world famous Brixham fish market, finishing off with a delicious fish breakfast at Rockfish. Age 15+, **booking essential**, see <https://therockfish.co.uk/products/fish-market-tour>. Sorry not suitable for wheelchairs £25 per person. Meet at entrance, New Fish Quay, Brixham TQ5 8AW

Snorkel safari

Sat 13th August 12pm - 2pm
Devon Wildlife Trust

Join our fully trained BSAC instructors for a snorkel safari around Wembury Bay. Suitable for beginners or more advanced snorkellers. Full kit provided. Children must be 8+ to take part.

Booking essential, see www.wemburymarinecentre.org/events. £25 per person.

Meet at Wembury Marine Centre, Wembury. PL9 OHP

Seagrass Spotters

Sat 16th July 2pm- 4pm
South Devon AONB

Take a peek into the world of our underwater seagrass meadows at low tide when they are exposed for all to see! Wear shoes that can get wet, no dogs please. Free.

Meet outside the Harbour office, Whitestrand, Salcombe TQ8 8BU

Rockpool safari with Shoresearch survey

Tuesday 16th August 2.30pm - 4pm
Wembury Marine Centre

Join the expert team for a guided rockpool safari to meet and learn about some



of Wembury's most famous inhabitants, as well as more recent arrivals, including invasive non-native species

and climate change indicator species. They will be recording everything found and contributing the data to The Wildlife Trusts citizen science Shoresearch Project.

Booking essential. www.wemburymarinecentre.org. £5 per person.

Meet at Wembury Marine Centre, PL9 OHP

Berry Head bat walk

Fri 19th August
7.30pm - 9.15pm
Torbay Coast and Countryside Trust

Find out more about the rare Greater Horseshoe bats which live in the caves in the limestone cliffs.

Booking essential,

see www.countryside-trust.org.uk. £8.50 per person.

Meet at Berry Head main car park, Brixham. TQ5 9NP

Celebrate Start Bay

Sun 21st August 11am - 5pm
Slapton Ley Field Centre

This fun and exciting day out is for great for everyone. Local musicians will fill the air with their tunes, whilst the irresistible smell of fresh stone baked pizzas will get your taste buds watering. Get hands on with free and inspiring environmental activities laid on by the Field Centre and other charities whilst local



businesses will be showing off their amazing products at their stalls. www.field-studies-council.org/locations/slaptonleynnr. Free.

Meet at Slapton Ley Field Centre, Slapton. TQ7 2QP

Berry Head guided nature walk

Thurs 25th August 10am -12.30pm

Torbay Coast and Countryside Trust

Join local Berry Head expert Nigel Smallbones for an informative walk around the headland. Having worked and lived on the nature reserve for many years, he will be sharing his in depth knowledge and insights of Berry Head's history, geology, flora and fauna.

Booking essential, see www.countryside-trust.org.uk/whats-on. £10 per person.

Wild for moths

Fri 26th August 10am - 12.30pm
Sharpham Trust

Find out more about moths - these amazing creatures that fly by night and day - in fun, family event that's FREE for under-18s. Learn about moth and butterfly life-cycles and create your own moth-wing designs. A moth trap will have been set up the night before to see what is around on the

Estate. **Booking essential**, see www.sharphamtrust.org. Adult £2, child free.

Meet at the woodland campsite, behind Sharpham House, Sharpham Estate, Ashprington TQ9 7UT



Bat watch

Mon 29th August 8pm - 10.30pm

Slapton Ley Field Centre

Explore the night-time world of these magical creatures. Watch them emerge from their roost, follow their foraging routes, and use our bat detectors to hear their weird and wonderful calls. **Booking essential**, see www.field-studies-council.org/locations/slaptonleyynnr and click on walks. Adult £8, child £5.

Meet at Slapton Ley Field Centre, Slapton, TQ7 2QP

Brixham fish market tour and seafood breakfast

7th, 14th, 28th Sept 6.20am
Brixham Trawler Agents

A chance to see behind the scenes at the world famous Brixham fish market, finishing off with a delicious fish breakfast at Rockfish. Age 15+, **booking essential**, see <https://therockfish.co.uk/products/fish-market-tour>

Sorry not suitable for wheelchairs
£25 per person.

Meet at entrance, New Fish Quay, Brixham TQ5 8AW



Explore the shore

Sat 10th Sept 11am - 2.30pm
Ian Blackwell and Guy Baker

Join Ian (Dangerous Dads) and Guy (Marine Biological Association) for an adventure on the beach – forage for food to cook, play games and explore the beach and caves. Bring beach gear and lunch. **Booking essential** email ianw.blackwell@btinternet.com or call 01803 840990. Adult £donation, child £donation. Meet at East Prawle Village Green (by the shelter). TQ7 2BU

Extreme rockpool safari

Saturday 10th Sept 11.30am - 1.30pm

Wembury Marine Centre

Join us for a guided tour of some of the best rockpools in Britain. Don't forget your wellies! Please leave your fishing nets at home, we'll use our hands and buckets and follow the Seashore Code. **Booking essential**. www.wemburymarinecentre.org.

£5 per person.

Meet at Wembury Marine Centre, PL9 0HP



Low tide discovery walk - Peartree Point

Mon 12th Sept 12.30pm - 2.30pm
South Devon AONB

Join us for a circular stroll over Start Point and down to Peartree Point for one of the lowest tides of the year! Discover more about the amazing array of creatures and plants which live far below the high water mark as they are exposed at low water and see if we can spot the local colony of grey seals hauled out on the rocks offshore.

Booking essential, see www.southdevonaonb.org.uk/events. Dogs on short leads only, rugged coastal footpath and short steep section down to the shore. Free but car park charge applies.

Meet at Start Point car park, Stokenham, TQ7 2ET



Beach Clean - Slapton Sands

Sat 17th Sept 9.30am - 12pm
Slapton Ley Field Centre

Challenge yourself to collect as much rubbish as you can and then weigh your rubbish and add your names to the beach clean leader board. Parking will be free for all those taking part in the beach clean and there will be a free whippy ice cream, tea or coffee for participants from the Start Bay Inn. Bring gloves if you have them. Free. Meet at Middle car park Slapton sands. SX 828 442.

Berry Head bat walk

Fri 23rd Sept July 6.30pm - 8.15pm

Torbay Coast and Countryside Trust

Find out more about the rare Greater Horseshoe bats which live in the caves in the limestone cliffs.

Booking essential, see www.countryside-trust.org.uk.

£8.50 per person.

Meet at Berry Head main car park, Brixham. TQ5 9NP

Great British Beach Clean

Sat 24th Sept 11am - 1pm
South Devon AONB and 'Till the Coast is Clear

Join us to survey and collect beach litter as part of this National week of local beach clean events. Volunteers are advised to wear wellies (or wet shoes), older clothes and gardening gloves. No dogs and not suitable for toddlers – site accessed by boats and some crossing seaweed covered rocks. **Booking essential**, see www.southdevonaonb.org.uk/events

Meet outside the Harbour office, Whitestrand, Salcombe
TQ8 8BU



Berry Head guided nature walk

Thurs 29th Sept 10am -12.30pm
Torbay Coast and Countryside Trust

Join local Berry Head expert Nigel Smallbones for an informative walk around the headland. Having worked and lived on the nature reserve for many years, he will be sharing his in depth knowledge and insights of Berry Head's history, geology, flora and fauna. **Booking essential**, see www.countryside-trust.org.uk/whats-on. £10 per person.

Forage for Wild Medicine day

Sun 9th Oct 10am - 4.30pm
Sharpham Trust

Discover the amazing world of wild herbal medicine and learn to make your own with Brigit-Anna McNeill. Bring a



packed lunch, warm clothes, waterproofs, sturdy shoes and water. **Booking essential**, see www.sharphamtrust.org. Adult £55.

Meet at Woodland Campsite, Sharpham House, Ashprington TQ9 7UT

Brixham fish market tour and seafood breakfast

12th, 26th Oct 6.20am
Brixham Trawler Agents

A chance to see behind the scenes at the world famous Brixham fish market, finishing off with a delicious fish breakfast at Rockfish. Age 15+, **booking essential**, see <https://therockfish.co.uk/products/fish-market-tour>. Sorry not suitable for wheelchairs £25 per person.

Meet at entrance, New Fish Quay, Brixham TQ5 8AW

Dartmouth Food Festival

21st - 23rd October

Dartmouth's annual celebration of the taste of South Devon! Demos, tastings, seminars, competitions, and exhibitors. See www.dartmouthfoodfestival.com.

Venues across Dartmouth and around the embankment

Keeping in touch with the South Devon AONB

Our website is hugely popular and up to date, with all of our news, great views and ideas of how to get out and enjoy the AONB, as well as information on project work and the Partnership.



www.southdevonaonb.org.uk

Our facebook page is a great place to catch up on news snippets, find out what we are up to and share photos. We have a fan page, so click on the 'like' button and you will receive our newsfeed direct to your page.



www.facebook.com/sdevonaonb

For those who 'tweet', you can follow us



[@southdevonaonb](https://twitter.com/southdevonaonb)

Or for sharing photos



www.instagram.com/southdevonaonb

We produce a regular news e-bulletin and monthly events e-listings. Sign up for free bulletins on our website.



www.southdevonaonb.org.uk

Alternatively, you can always email



enquiries@southdevonaonb.org.uk

or even pick up the phone, and actually talk to us!



01803 229330

For more information

Dartmouth

01803 834224

hello@visitdartmouth.uk

www.visitdartmouth.uk

Kingsbridge

01548 853195

info@hellokingsbridge.co.uk

www.hellokingsbridge.co.uk

Ivybridge

01752 897035

info@ivybridgewatermark.co.uk

www.ivybridgewatermark.co.uk

Modbury

01548 830159

enquiries@modburytic.org.uk

www.modburytic.org.uk

Salcombe

01548 843927

info@salcombeinformation.co.uk

www.salcombeinformation.co.uk

Totnes

01803 269190

info@visittotnes.co.uk

www.visittotnes.co.uk

Visit South Devon

www.visitsouthdevon.co.uk

There are lots more fabulous events on our website!

www.southdevonaonb.org.uk

Photo credits: P2 & P3 © Skyflicks Media, P23 Cows © Laura Tucker, P28 Elberry Cove © Bruce Garnett, P29 Berry Head © Jerry Burman, P32 Velvet swimming crab © Paul Naylor, P32 Greater Horseshow Bat © Hugh Clark. All other images © Jim Brown or © South Devon AONB Unit
Designed by South Hams District Council. Printed by www.pepper.co.uk



This publication is certified carbon neutral, printed by an eco-accredited factory to ISO 14001 on a certified carbon neutral press.

